



THE APPLETON WISKE PARISH PLAN (Full Edition)

2007

CONTENTS

The Summary Parish Plan (distributed to each home in the Parish)	Pages 3 - 12
Executive Summary	Page 5
Key Findings	Page 7
Input from Appleton Wiske Parish Council	Page 9
Recommendations	Page 10
The Supporting Papers	Page 13
Social, Leisure and Amenities	Page 13
Physical and Social Environment	Page 17
Services, Utilities and Facilities	Page 18
Health, Safety and Security	Page 20
Transport	Page 28
For Young People	Page 29
For Older Residents	Page 36
Text of the Questionnaire	Page 39

APPLETON WISKE PARISH PLAN 2007

Introduction:

The Appleton Wiske Parish Plan was launched with a £2k grant from the Yorkshire Rural Community Council.

We began gathering information for the Appleton Wiske Parish Plan in September 2006 with an all day exhibition and a public meeting and briefing in the Village Hall. Over 100 people attended the event and made some very useful initial observations about the scope and range of the plan. Information gleaned at that meeting formed the basis for the Questionnaire that was sent to every home in the parish. There are 180 village and 21 outlying properties and the Questionnaire was well received and resulted in 81 returns (40%).

We formed a steering group from eight volunteers who came forward at the public meeting. The volunteers helped to compose the Questionnaire, each adopting a section that they analysed and presented as part of the Parish Plan. We created 2 special sections, the first for the under 18s and the second for the over 60s, two special interest groups in the community.

A final public meeting was held in April 2007 attended by 21 people at which the principal findings were presented and final comments received.

The evidence is presented by section with the principal findings listed by priority. The Plan begins with an Executive Summary and a list of recommendations of the top issues to be addressed.

From conception to completion the Parish Plan has been a dynamic document incorporating the many ideas and initiatives that have surfaced. These have come from the Parish Council, individuals and special interest groups like Appleton in Bloom and the Save Our Post Office campaigns that have addressed local needs and opinion.

The Plan ends with a list of recommendations with actions placed where appropriate to take the process forward. Some are "quick fix" items that can be achieved in weeks; others are more ambitious and will require time for planning and implementation.

The Future:

The Steering Group hopes that this Plan will be the basis for the future of our village community and an important tool in achieving the changes we believe to be important for Appleton Wiske in the 21st Century

Appleton Wiske Parish Council will oversee the implementation of the Plan assisted, as required by other interested groups. The Plan will be reviewed in 5 years time to see what further actions are needed.

Members of the Steering Group:

Ken Blackwood, Chris Canning, Simon Golding, Jean and John Johnson, Richard Johnson, Sue Kennedy, Karen Portsmouth.

Hon Treasurer:

Emily Wren (Parish Clerk)

Published: October 2007

Executive Summary

An important element of the Parish Plan confirmed what we already knew that we are privileged to live in a vibrant community with many facilities and organisations that serve the village and the neighbourhood. There is an excellent spirit abroad and many are committed to help their neighbours and serve the community in many ways. The national rise in house prices has had an effect on the demography of the village and the result is that there are few, if any, affordable properties available for young people, or for older people to "downsize" to.

Transport and the state of the infrastructure are major concerns and the complete lack of public transport is lamented. The state of the roads in the neighbourhood and lack of investment in renewing / repairing transport furniture, road signage etc, is detrimental to the appearance of the village. Speeding traffic through the village, especially along Hornby Road, is a concern and there are issues around street parking and the village green that could be improved.

The facilities owned by the Appleton Recreation Association are reaching a critical phase in their lives. The state of the Car Park, the associated issues that surround the Skateboard Park and the need for additional re-cycling facilities also struck a chord with many. We have a good record for recycling but there is scope for further facilities to improve targets.

The final areas of major concern are those requesting more facilities for the young and the old of our community. Initiatives like the funding provided for the NYCC4Youth Service may offer a solution. The isolation of the elderly could also be addressed by greater willingness to help those without transport.

The Parish Plan has identified many positive features of village life. The efforts of Appleton in Bloom and the Pantomime are good examples of the achievements of volunteers and the community working together.

There are however a number of further developments that should be investigated to fully exploit the potential of the village and the gifts of its inhabitants. These include greater use of the Village Website, and extending the Neighbourhood Watch Scheme to the 21 outlying properties in the Parish.

The Village has two important assets that are well used but have potential for greater expansion. They are the Village Hall and the Community Primary School. The Village Hall has a number of regular bookings throughout the week but there is additional capacity that could be used for community activities. The Village Hall currently provides a home for the Pre-School Group that serves a number of villages. It has been suggested that the provision of a separate Pre-School Unit should be investigated and that the Unit could be attached to, and co-located with, the Primary School.

Key Findings:

Social, Leisure, and Amenities

- New build housing for starter or affordable homes would be welcomed
- The School is vital to the life of the village and 43% of respondents thought that greater use could be made of the school by the wider community.
- Provision of a Youth Club and youth activities needed
- Greater use could be made of the Village Hall
- Need to extend the scope of the Village Website
- Should Pre School be co-located with the Village school?

Physical and Social Environment

- Post Office vital to our community
- 24 hour ATM provision would be appreciated
- Car Parking is at a premium
- Excellent community spirit
- Appleton in Bloom maintains the village environment
- The Annual Pantomime is an important village activity

Services, Utilities and Facilities

- State of roads, pavements and pathways cause concern
- Footpath required along the length of Hornby Road
- Refuse and recycling – 50% of respondents wanted more recycling facilities especially cardboard and plastic
- Traffic calming – 20 mph limit in village
- Water quality has deteriorated in recent years
- Village Broadband connections below par
- More support for local businesses and enterprises

Health, Safety and Security

- GP and Prescription service excellent
- Police presence inadequate and unacceptable
- Low level of crime – but petty vandalism a nuisance
- Neighbourhood Watch scheme important and should be extended to outlying farms and properties
- Concerns about area around Skateboard Park

Transport

- There is no public transport and high dependence upon cars
- Could a cash grant for pensioners be paid into minibus fund in lieu of bus passes
- No: 72 bus should be diverted through village from Great Smeaton to Brompton
- Mini-bus replacement due

Young People of Appleton Wiske

- Interest in a weekly Young Peoples' Evening
- High demand for a Youth Council
- Most popular choices for possible activities were: Basketball/Netball hoops, Aerobics/Yoga, Drama, Music/Band, Singing, Chess and Bike/Cycling Club.
- The best thing about living in the village is the ease access to friends and the friendliness in the village.
- Transport dependency and "nothing to do" were the principal concerns of the young people.

For Older Residents

- Broadacres Housing policy and allocation of single person dwellings
- Lunch/social group/activities would be beneficial.
- High reliance upon friends, neighbours and families by the elderly
- Many of the older residents are the most active in village organisations etc.

Input from Appleton Wiske Parish Council

Items that have been on the Parish Council Agenda for a number of years.

- The provision of a footpath to the Shorthorn Inn
- The provision of a footpath along the whole of the Hornby Rd
- Action to improve safety at the road bend outside the school
- Moving the 30 miles per hour sign at the Wiske end of the village to the South side of the Wiske bridge
- Action to prevent parking on the pavements, particularly on Front Street
- Improvement of the surface of the cobbled footpath to the North of St Mary's church
- Adoption and maintenance of the access road to Church House Farm, currently in a poor state of repair
- Adoption and maintenance of the narrow lane from the Lord Nelson to Baker Street
- Provision of a mini-roundabout at the Shorthorn entrance on the junction of Picton and Rounton roads.

Post Script

The Steering Group has decided that the Parish Plan will be published in two forms. The first, a shorter narrative edition (the first 7 pages) will go to every home in the Parish. The second, a complete version, containing all the information we have collected in the process of completing the Parish Plan. This will be sent to the Statutory Authorities and other interested parties. Copies of this second version will also be available, on the Village Website, and on loan, for wider consultation.

The Steering Groups thanks all those who took part in the Surveys, completed the Questionnaires and made personal contributions to the Parish Plan.

Recommendations

1. That the Parish Plan is accepted by the Parish Council and that the Parish Council implements the recommendations made, and monitors progress over the next 5 years

Action: Appleton Wiske Parish Council

2. That the Management Committee of the Village Hall investigates ways to further the utilization of the Village Hall by the community

Action: Appleton Wiske Village Hall

3. That the Governors and Headteacher of Appleton Wiske Community Primary School consider additional ways in which the School could be used by the community

Action: Governors and Headteacher

4. That the Parish Council contact the Chief Superintendent of the Eastern Area of North Yorkshire Police to discuss the problems of policing the village and the appointment of Community Support Officers from Northallerton. That the Neighbourhood Watch Scheme be extended to include outlying properties

Action: AW Parish Council and North Yorkshire Police

5. That North Yorkshire Police be invited to consider traffic calming measures and the introduction of a 20 mph speed limit within village boundaries

Action: AW Parish Council and North Yorkshire Police

6. That the Integrated Passenger Transport Department of North Yorkshire County Council be invited to consider the re-routing of the No: 72 Bus service through Appleton Wiske

Action: AW Parish Council and NYCC

7. That the village mini-bus committee seek funding for a replacement for the min-bus and that they should also investigate whether funding in lieu of bus passes could be paid into the mini-bus fund

Action: Mini-bus Committee

8. That all members of the community continue to support the active campaign to preserve the village Post Office as an essential asset for the future life of the village

Action: All

9. That the Parish Council investigate the possibility of further affordable housing developments within the village and that the policy for the allocation of social housing be clearly defined

Action AW Parish Council and Broadacres

10. That British Telecom be invited to consider the installation of enhanced Broadband/IT services to the village to support the growth in home computers and the greater use of IT facilities by members of the community

Action: British Telecom

11. That all members of the community be encouraged to report defects and damage to public utilities using the freephone numbers and Hotlines publicised by the utility companies

Action: All

12. That any future recycling plans should include the provision of services for plastic and cardboard waste

Action: Hambledon District Council

13. That there should be active support for the promotion of local businesses and additional sources of local employment.

Action: Hambledon District Council

14. That interested parties in the village be encouraged to support the request for the provision of a Youth Club / Youth Council for the younger members of the community.

Action: Parish Plan Group

15. That a Lunch Club and social gathering be established for older members of the community and those who live alone

Action: Parish Plan Group and Lord Nelson

16. That the Parish Council investigates the provision of additional Allotment gardens

Action: Appleton Wiske Parish Council

17. That the Parish Council considers the publication of a guide to the village for the benefit of newcomers to the community and the wider dissemination of information for all

Action: Appleton Wiske Parish Council

18. That the excellent GP Service run from Northallerton, with the Tuesday morning surgery in the Village Hall and the medicine prescription service collected by the min-bus drivers and distributed from the Post Office, is supported and retained

Action: All

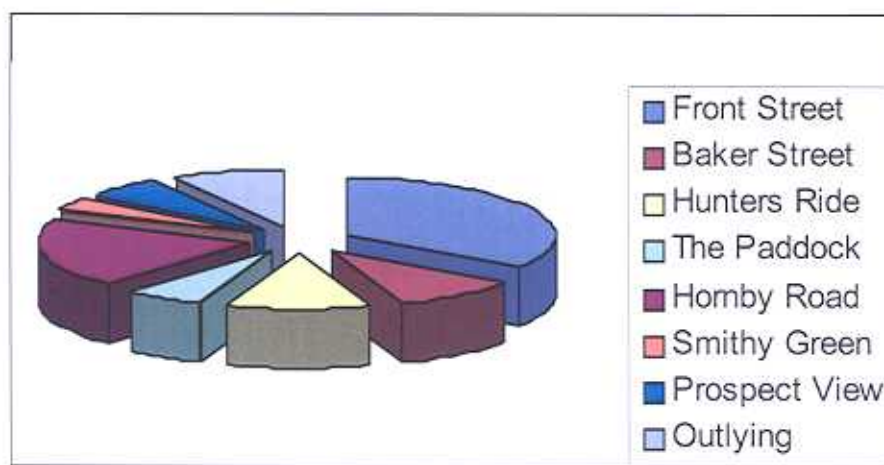
SUPPORTING PAPERS

Key Findings:

Social, Leisure, and Amenities

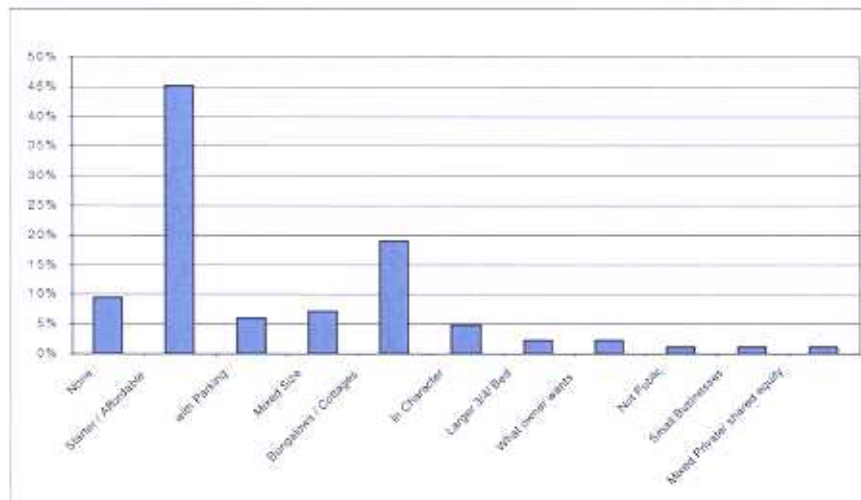
- New build housing for starter or affordable homes would be welcomed
- The School is vital to the life of the village and 43% of respondents thought that greater use could be made of the school by the wider community.
- Provision of a Youth Club and youth activities needed
- Greater use could be made of the Village Hall
- Need to extend the scope of the Village Website
- Should Pre School be co-located with the Village school?

Respondents by location



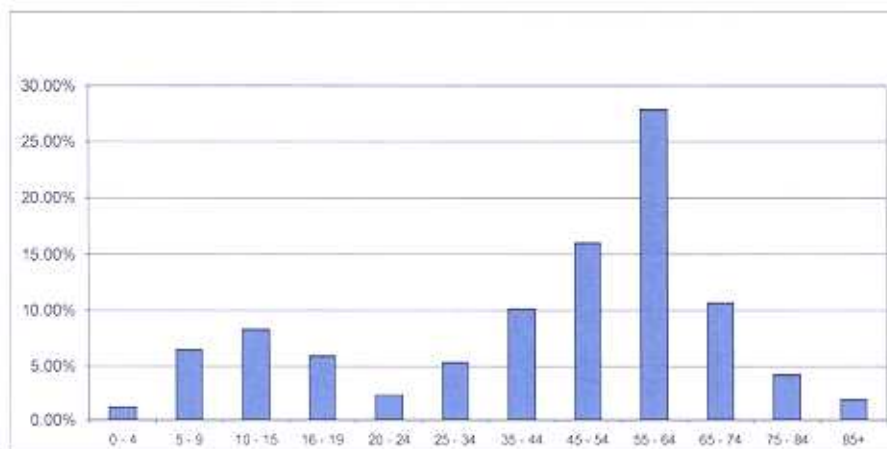
The largest group of forms returned came from Front Street [28%] followed by Hornby Road [16%]

Type of Housing Required



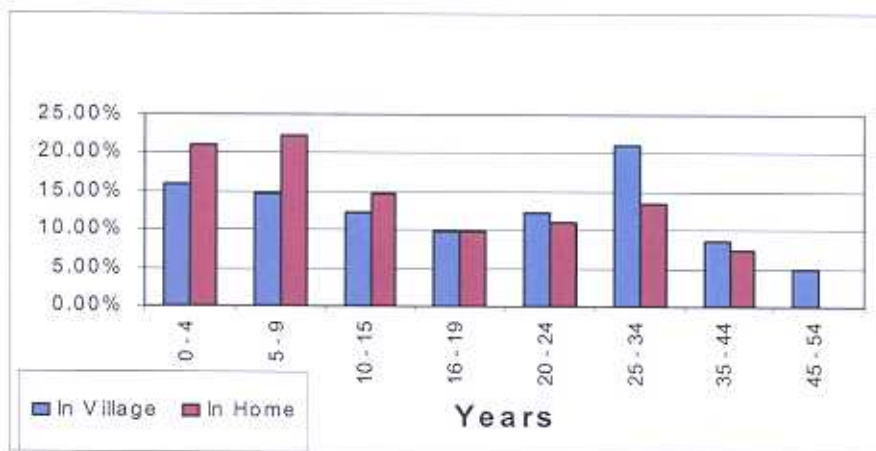
The highest number of suggestions for new build housing is for starter or affordable homes. The next highest category is for cottages which, whilst not having a clear definition, may overlap the above category.

Age of Residents



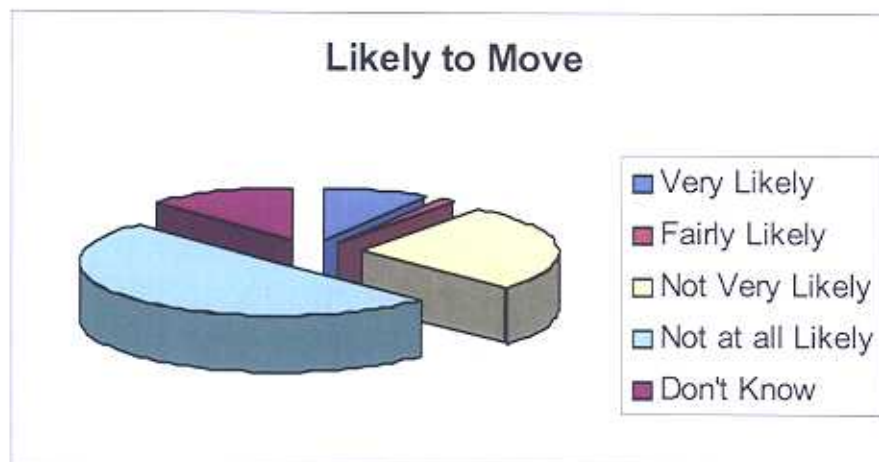
There is a significant peak in the age of residents at 55 – 64 years with a smaller peak at 10 – 15. There is a significant drop in the number of residents between 20 and 24 years.

Years in Village and Home



The length of time living in the village falls gradually to the 19 – 19 years band and then rises to peak at 25 – 34 years [the period during which Hunters Ride was built]

Mobility



Over 50% of residents are 'Not likely at all' to leave the village. This figure rises to 78% when the 'Not Likely' category is included. The 'very likely' reason may result from lack of suitable accommodation or work / education.

General Observations

- a. The most popular activity in the village is 'NONE!', followed closely by Appleton in Bloom and Church / Chapel. 'None' was also the most popular activity outside the village and the most popular suggestion for new activities. Bowls was the suggestion with the highest number of responses for new activities.
- b. 43% of respondents thought that there should be more use of the school and 84% thought that it was important to have the school in the village.
- c. 40% thought that a Youth Club should be provided in the village though 26% thought there was no need for addition facilities for young people.
- d. The majority of young people attend Appleton Wiske School or either the Allertonshire or Northallerton College. Children also attended Yarm School, Yarm Primary, Great Smeaton and Osmotherley schools.

Physical and Social Environment

- Post Office vital to our community
- 24 hour ATM provision would be appreciated
- Car Parking is at a premium
- Excellent community spirit
- Appleton in Bloom maintains the village environment
- The Annual Pantomime is an important village activity

Nearly all of the people surveyed thought the appearance of the village was good; they also liked the community spirit, friendly people, tranquillity and freedom for children to play outdoors in safety.

The down sides were - speed of traffic through the village, poor car parking/traffic congestion, muddy roads from tractors etc., the anti-social behaviour of some young people, wheelie bins, seeking a return to weekly collections. there are poor facilities for youngsters, lack of policing and housing allocation issues featured in the returns.

The closure of the Black Swan junction, sporadic gritting in winter and no bus service are problems. Concerns were also raised about the condition of the roads and pavements.

The lack of policing after dark encouraged outsiders to use the car park at the skate park for illicit use and this in turn adds to the litter problems in that area.

The second section of our survey covered shopping, how we use the Post Office and what different services we would like from it to encourage us to use it more. Most people use Northallerton, Darlington and Yarm to do their shopping, some use the Post Office and some Internet shop.

Regarding the Post Office more than half said there is a good choice of goods available at reasonable prices, but would like extra services to be available i.e.- dry cleaning, local produce for sale, non prescription medicines, newspaper delivery and a free ATM machine. Late night opening until 8 pm and DVD hire and more Post Office services – car tax, passports etc and to keep pensions payable at Post Offices. It was recognised that “use it or lose it” was key to the survival of the Post Office.

Services, Utilities and Facilities

- State of roads, pavements and pathways cause concern
- Footpath required along the length of Hornby Road
- Refuse and recycling – 50% of respondents wanted more recycling facilities especially cardboard and plastic
- Traffic calming – 20 mph limit in village
- Water quality has deteriorated in recent years
- Village Broadband connections below par
- More support for local businesses and enterprises

The questions asked about local government produced answers that showed that the majority of us feel that we have little or no influence over the decisions made by local councils although about half thought felt well informed about their work and decisions.

About one third were aware of the Community Strategy for this area. Looking ahead, there is to be research carried out to find our views on having only one tier of local government. The views of the village may be incorporated into to the final Parish Plan document.

When asked which facilities we would use for help, assistance or information then the GP/Health Centre was most popular, followed by Library, Police, County Hall, The CAB, Religious Groups and Social Services.

On the question of utilities:

Electricity resulted in a few comments about power cuts, although these are not as frequent as in the past. Telephone and Broadband continues to be a problem with around a fifth of people experiencing difficulties. A lot of work has been carried out by BT but they still need to replace a main cable from the Great Smeaton Exchange.

Water quality and supply was criticized by about a half of all respondents. The quality has deteriorated in recent years and harder water creates too much lime scale.

Refuse and Recycling attracted quite a few comments:

The most popular that we should have plastic and cardboard recycling. There were a few requests for kerbside recycling collections, weekly black bin collections and more street cleaning.

Street lighting was considered adequate but there were comments about maintenance and that there should be extra lighting at the school, the playing field and on Hornby Rd.

Roads drew a lot of comments but the most common were:

- The state of roads leading in and out of the village
- Speeding on Hornby Rd
- Parking on Front St
- The lack of pavements on Hornby Rd - at the Hornby end and up to the Shorthorn.
- The junctions outside the Shorthorn, with the possibility of a mini roundabout or re-designation of priority, and no parking at the Triangle and the Lord Nelson.

Health, Safety and Security

- GP and Prescription service excellent
- Police presence inadequate and unacceptable
- Low level of crime – but petty vandalism a nuisance
- Neighbourhood Watch scheme important and should be extended to outlying farms and properties
- Concerns about area around Skateboard Park

This section of the Questionnaire produced the greatest response and the nature of the subject and the particular returns required greater analysis of the issues raised.

Health - Access to health services

There is no direct access to any health service in the village apart from a weekly surgery at the village hall and a prescription collection service at the shop, **both deemed excellent**. Other services are available in the neighbouring towns. Accident and Emergency service is available in Northallerton but other hospital visits are most likely to be in Northallerton or Middlesbrough

Q. How easy was it to use the following services?

GP/health centre, chemist/pharmacy, health visitor/community nurse, dentist, ante-natal clinic, optician, hospital in-patient, hospital out-patient, accident and emergency.

	Easy	Convenient	Not easy	Difficult	Not used/ don't know
GP/health centre	49	38	4	0	4
Chemist/pharmacy	29	33	19	5	4
Health Visitor Community Nurse	11	14	9	3	46
Dentist	26	24	23	16	5
Ante-natal clinic	1	6	1	3	63
Optician	28	33	19	5	8
In-patient	18	30	9	5	26
Out-patient	20	45	13	3	11
A and E	25	26	14	3	20

In general there seems to be no problem accessing the health services listed. However there were a number of comments that qualified their answer as 'easy' because they had their own transport. The GP service has the highest number of people (96%) who find it very easy or convenient to get to the GP. The chemist, health visitor/community nurse, dentist and optician had much the same convenience ratings varying between 72% and 66 %. The prescription service at the village shop was appreciated. Ante-natal services were used by only 9 people, (11%) who were split 56% to 33% as to whether they were easy or difficult to access. In general people seemed happy with access to the hospital services but there were comments that people wanted them to remain in Northallerton. People found access to out-patients(90%) and in-patients(78%) either very easy or convenient, while 54% felt that the Accident and Emergency service was very easy to access.

Recommendations: The Health Authority should be asked to notify the Parish Council of any proposed changes to the hospital service in Northallerton.

Health - Long-term illness, disability and caring

General responsibility for assessment of care needs lies with the County Council Social services department while other relevant support can be obtained through the voluntary sector through organisations such as Age Concern, Hambleton and Richmondshire Carers Association and the Alzheimer's Society

Q. Do you or anyone in your household have a long term illness or disability that places limitations on daily life?

	% of total replies
Yes	13
No	80

Q. Are there any adaptations which you need in your home?

	% of total replies
Yes	5
No	86

Q. Have you used any of the following in the last twelve months

		% of total replies
Home Care	Yes	4
	No	88
Meals on wheels	Yes	0
	No	91
Respite care	Yes	1
	No	90
Day Centre	Yes	0
	No	91
Occupational therapy	Yes	5
	No	86
Home aids/Adaptations	Yes	3
	No	89
Support from Social Services	Yes	5
	No	86
Adoption/fostering services	Yes	0
	No	91

Q. Do you receive any help in your daily life from a friend or relative?

	% of total replies
Yes	14
No	84

Q Are you caring for an elderly, long-term sick or disabled person on a regular basis?

	% of total replies
Yes	18
No	76

Q. If you receive support as a carer where does this come from?

	% of total replies
Social Services	3
Carers group	3
Partner/spouse	5
Other	5
Friends/neighbours	1
Church/faith group	0
Voluntary group	0
Other	0
None received	8

- The population appears to be healthy and well able to care for itself.

Very few people used the 'social' services. No-one used meals on wheels, the day centre or the adoption/fostering services. The services with the highest number of users were help from the Social Services department (4) and occupational therapy (4), followed by respite care (1) and home care (3) and home aids and adaptations (2). In general there do not appear to be large numbers of people with a long-term illness, disability or in need of care. 82% of households do not admit to any problems while 10 households (14%) have members with long term illness or disabilities, 11 (14%) receive regular help from friend or relative, and 14 (19%) are caring for someone regularly. Only 4 households felt that they needed any adaptations in their homes, these being handrails, a shower and walking aids. Of the 14 carers 6 (38%) received no support and of the rest family support, whether in or outside their household, provided help in 50% of households. Other support was provided by Social Services, carers groups and friends. These figures would appear to reflect a healthy population well able to care for itself.

Recommendations: None

Safety at home – Availability of help

There is no existing record about this information

Q. In the following circumstances who would you first ask for help?

* There were extra answers from 12 households (15%)

		% of total replies
You are taken ill	A family relative Friend or neighbour Doctor or community nurse Health visitor/social worker Other No one/not applicable	65 16(8) 14(3) 0 1 1
Babysitting at short notice	A family relative Friend or neighbour Doctor or community nurse Health visitor/social worker	20 13 (3) 0 0 1 50
Caring for a family member at short notice	A family relative Friend or neighbour Doctor or community nurse Health visitor/social worker	54 14 (5) 6 0 1 15
Transporting bulky items	A family relative Friend or neighbour Doctor or community nurse Health visitor/social worker	49 26 (5) 0 0 3 13

Help with money matters	A family relative	40
	Friend or neighbour	4
	Doctor or community nurse	0
	Health visitor/social worker	0
	Other	13
		34

- High reliance upon friends and families by the elderly

In every situation the family was the first to be asked, ranging from 72% to 54%, but there was a significant percentage in each situation who would ask their neighbours. Plus there were 12 households (15% of the total) who put both family and neighbours as first port of call in some situations especially when needing transport. This indicates not only a good community feeling where neighbours know each other well and will support each other when needed, but also that many households have family support in the area.

Perhaps not surprisingly the highest percentages asking for family help were in the more personal situations, being ill, caring for a family member and help with money matters whilst neighbours were more likely to be asked for help for babysitting and transport. There were very few requests for help from doctor or health visitor. 44% of people either did not answer or felt the money matters question not applicable or would not ask anyone for help.

Recommendations: None

Security

The village has been covered by a Neighbourhood Watch scheme since the summer of 2006. The police cover for the area is provided by the North Yorkshire Police Authority and is based on their office in Stokesley. There are no officers specially designated to cover Appleton Wiske.

Q. Have you registered with the Neighbourhood Watch Scheme?

	% of total replies
Yes	64
No	29

Q. How should our Community Police Office and Community Support Office be used? Not answered by 35 %

Q. Do you think there needs to be any action to reduce crime in this area?

	% of total replies
Yes	46
No	29

- Neighbourhood Watch scheme well supported
- Police presence inadequate
- Concerns about area around Skateboard Park

This section attracted many comments, some of them interchangeable between the questions on the role of the Community Police Officer (CPO) and Community Support Officer (CSO) and what needs to be done to counteract crime in the area. It was difficult to separate out the suggestions into answers for the separate questions and therefore the comments are on this section as a whole. 69% are members of the Neighbourhood Watch scheme. In general people did not seem at all clear about the role of CPO and CSO or whether there was 'one' for the village, 8% actually stating this. Far and away the largest numbers of comments (49%) were concerned with the lack of police visibility and accessibility in the village, whether specifically on patrol at night, in the recreation ground, on the beat or more generally in an educative role at schools or at surgeries in the Village Hall.

The general consensus appeared to be that the police should know and be known by the community. This could perhaps involve them in a two-way flow of information, possibly through the Neighbourhood Watch scheme, to share information about activities of concern in the village and surrounding area. 6% of comments suggested that this would be much easier if the area was policed from Northallerton because there was swifter access in an emergency and the children of the village, in the main, went to school there. It was also felt that this was not a one-sided obligation and that villagers should report incidents that concerned them and that parents should be involved in the concerns about the youngsters who may be causing problems.

A focus of comment did seem to be the recreation ground and skate park and addressing the problems with this area would seem to be a priority for 6% of respondents. There were also general comments about the individual's responsibility to deter crime by good security in homes, cars and complying with the law in such activities as driving.

5% of the comments were positive about the low level of perceived crime in the area and a suggestion that some of the problems are caused by the lack of organised activities in the village for the young people. This, plus the fact that 54% did not answer the question or stated that they felt there was no problem, leads to the acceptance that this area seems to have very little major criminal activity, but, as a number of people commented, there should be no complacency about this.

Recommendations:

- **North Yorkshire Police should be asked to consider providing regular visible patrols of the area.**
- **North Yorkshire Police should designate a link officer who would become known to the villagers**
- **The Recreation Ground and Skateboard Park should be a focus of improved security by the Police and the other relevant village bodies.**

Transport

- There is no public transport and high dependence upon cars
- Could a cash grant for pensioners be paid into minibus fund in lieu of bus passes
- No: 72 bus should be diverted through village from Great Smeaton to Brompton
- Mini-bus replacement due

The Parish plan has identified and confirmed the reliance upon personal transport to access the village and the neighbouring towns and villages. Those without their own transport are at a distinct disadvantage for apart from the weekly minibus service to the market in Northallerton on Wednesdays there is no other alternative to taxis, at £25 each way, at present.

One recommendation would be to approach the Transport Authorities to investigate the possibility of diverting the No: 72 buses from Darlington to Northallerton from Great Smeaton, through Hornby, Appleton Wiske, Deighton and rejoining the original route at Brompton. It is considered that there is more potential passengers from these villages than from Little Smeaton and Lovesome Hill.

At present those over 60 are entitled to a free bus pass within North Yorkshire. Unless we are provided with a viable public transport system then it is felt appropriate that the County Council make the costs in providing bus passes payable to the village minibus fund per capita for those over 60 who live in the village.

The present minibus is over 10 years old and is due for replacement. This will be a major expense and demand a fundraising initiative in the village. The grants that might be available for the purchase of a replacement be used to provide a weekly minibus taxi, or be diverted to subsidise the No: 72 bus. The loss of the minibus would impact upon the schools in the area who are major users of the facility.

Young People of Appleton Wiske

- Interest in a weekly Young Peoples' Evening.
- High demand for a Youth Council.
- Most popular choices for possible activities were:
Basketball/Netball hoops, Aerobics/Yoga, Drama, Music/Band, Singing, Chess and Bike/Cycling Club.
- The best thing about living in the village is the ease access to friends and the friendliness in the village.
- Transport dependency and 'nothing to do' were given as the worst things about living in the village.

There were 14 respondents aged 12 and over, and 7 under the age of 12, giving a total of **21 respondents**. As this Section is vital for the rising generation the information obtained has been presented in full with the relevant recommendations for the Section Leader.

Current situation:

There are approximately 35 young people in the village, aged 11 – 15 and another 34 aged between 16 and 20. The total number of young people within the age band 11-18 is thus approximately 52.

Age in 2001	0-4	5-7	8-9	10-14
2001 Census numbers – used with permission (Crown Copyright Reserved)	19	18	17	34
Age in 2007	6-10	11-13	14-15	16-20

The majority of the young people leave the village primary school to continue at the Allertonshire and then Northallerton College. A significant minority attend schools or colleges in Teesside, Yarm and Darlington. The Allertonshire and Northallerton College are served by school coach, but all other transport has to be arranged privately. Most of the young people are thus away from the village by eight a.m. and only get back in the early evening. There is no Council transport subsidy for young people older than 16 who attend college. At present, the transport for this group is supported by the Appleton Wiske Education Trust.

Young People of Appleton Wiske

- Interest in a weekly Young Peoples' Evening.
- High demand for a Youth Council.
- Most popular choices for possible activities were:
Basketball/Netball hoops, Aerobics/Yoga, Drama, Music/Band, Singing, Chess and Bike/Cycling Club.
- The best thing about living in the village is the ease access to friends and the friendliness in the village.
- Transport dependency and 'nothing to do' were given as the worst things about living in the village.

There were 14 respondents aged 12 and over, and 7 under the age of 12, giving a total of **21 respondents**. As this Section is vital for the rising generation the information obtained has been presented in full with the relevant recommendations for the Section Leader.

Current situation:

There are approximately 35 young people in the village, aged 11 – 15 and another 34 aged between 16 and 20. The total number of young people within the age band 11-18 is thus approximately 52.

Age in 2001	0-4	5-7	8-9	10-14
2001 Census numbers – used with permission (Crown Copyright Reserved)	19	18	17	34
Age in 2007	6-10	11-13	14-15	16-20

The majority of the young people leave the village primary school to continue at the Allertonshire and then Northallerton College. A significant minority attend schools or colleges in Teesside, Yarm and Darlington. The Allertonshire and Northallerton College are served by school coach, but all other transport has to be arranged privately. Most of the young people are thus away from the village by eight a.m. and only get back in the early evening. There is no Council transport subsidy for young people older than 16 who attend college. At present, the transport for this group is supported by the Appleton Wiske Education Trust.

There is little opportunity for friends to socialise in larger groups, safely and at a comfortable venue, particularly in winter or on days when the weather is poor.

The Village Green runs along Front Street and although adequate for young children, it is not suited to the more boisterous ball games of the older children and teenagers. The Village Hall has a smooth, paved surface but can be dangerous as it is a car park. Use of the area as a Sports Wall has caused damage to some of the fencing.

The Field and Park are ideal in terms of minimising disruption to residents and damage to private property, but are obviously more remote. Littering is a problem, as is drug usage and vandalism. Young people have expressed the concern that non-resident young people cause a number of problems in the village recreation park, for which the Appleton Wiske youth are then blamed.

Activities/Facilities currently available in the village include: Cubs, Brownies, Guides, Footloose (Jazz and Tap dancing), Junior Bloomers (linked to Appleton in Bloom), Tennis, Football, Skateboard Park, Badminton and Pilates (the last two only being offered quite late in the evening).

There is an annual village pantomime in which many of the young people are involved, either as actors, musicians or as backstage support.

Q 1. Do you make regular use of any of the following facilities in the village?

Response:	Shop	81 %
	Post Office	57 %
	Village Hall	52 %
	Play Park	38 %
	Green (Front Street)	33 %
	Football field	24 %
	Skate Park	19 %
	Tennis Courts	10 %

Findings: The village shop and post office are important venues for the youth. The village hall is frequently used since it is linked to a number of youth activities. The recreation park does not feature very prominently, presumably because it is more remote from the centre of the village.

Recommendations: Encourage further local support of post office and shop, so that they remain in service. Parish Council should communicate with those running activities for the young people in the village and assess how they can be supported , so as to ensure the continued provision of these activities.

Q 2. Would you be interested in attending a weekly Young People's evening within the village?

Response: Yes 43 % No 57 %

Findings: The response to this question varied according to the age of the respondents. The younger children (less than 14 years old) were strongly in support of some form of youth activity in the evenings. There was far less interest from the young adults in the village.

Recommendations: Explore the use of a County Youth Bus and associated supervisor to provide a venue for socialising in the village. Investigate the possibility of establishing a Youth evening in the Village Hall or the Chapel and the feasibility of a County Youth worker.

Q 3. Would you like to have a youth council formed in the village, to promote the interests and address the concerns of the young people within our community?

Response: Yes 67 % No 33 %

Findings: Some of the young people feel that they do not have a voice in the community, in order to express concerns or ideas, as expressed in Question 9.

Recommendation: Form a Youth Council that has representation on the Parish Council.

Q 4. Would you like to make use of a Study 'Quiet' Room during the week?

Response: Yes 2 % No 81%

Finding: There appears to be adequate opportunity for study within the village.

Q 5. Which of the following would you be likely to attend/use if they were available for the young people in Appleton Wiske? (Circle as many as are applicable)

Response:	Drama	38 %
	Basketball/Netball Hoops	33 %
	Bike / Cycling Club	29 %
	Music / Band	24 %
	Arts / Crafts	24 %
	Wildlife / Conservation	24 %
	Aerobics / Yoga	24 %
	Singing	19 %
	Cricket nets	19 %
	Chess league	14 %
	Computers (with internet)	14 %
	Running / Walking Club	14 %
	Dirt track for bicycles	14 %
	Personal Growth Discussion Group	0 %

Finding: There appears to be substantial interest in a variety of different activities,. It is worth noting that East Harlsey received support for a two week drama workshop during the holidays.

Recommendations: In the interests of building a cohesive community it would be useful to have activities that bring together people across the age spectrum e.g. chess league, village band and singing group, weekly time trials for running/walking, bird watching, astronomy, conservation, fashion design/sewing, art club etc., utilising the many, varied talents that people of all ages have within our community. It is recommended that one of these activities is selected as a pilot project, with the support and sponsorship from a group of adults within the village. If successful, the range of activities on offer could be broadened.

A second recommendation is that a person should be nominated to explore how East Harlsey went about securing funding for their drama workshop, and determining the feasibility of undertaking the same exercise in Appleton Wiske.

Q 6. If the village bus was to make a regular, scheduled trip for a couple of hours every weekend, where would you like it to go?

Response:	Northallerton	38 %
	Middlesbrough	14 %
	Yarm	14 %
	Others	<1 % each

Findings: A number of indicators suggest that there is a real need for transport between the village and other local communities, particularly Northallerton. On a Saturday morning, more than 10 of the young people within the village travel to Northallerton to attend music practice.

Recommendation: Ask the Village Mini-bus committee to assess the feasibility of conducting a service to Northallerton on a Saturday/Sunday.

Q 7. Do you feel safe in the village in the daytime and in the evening? If you answered "no" please state where you feel unsafe and why.

Response:

	Yes	No
Daytime	100 %	0 %
Evening	86 %	10 %

Findings: The perceived lack of safety is at the recreation fields in the evening.

Recommendations: This issue needs to be explored in more detail with the youth in the village. The proposed Youth Council is the most appropriate means to understand the concerns about the recreation area and how these perceptions might be resolved.

Q 8. What do you like most about living in Appleton Wiske?

Response:

Many friends in the village, friendliness	52 %
Quiet, peaceful	33 %
Village is neat, beautiful	19 %

Findings: The ability to socialise with peers in a secure environment is very important to young people in the village.

Q 9. What do you like least about living in Appleton Wiske?

Response:

Transport dependency	29 %
Nothing to do	29 %
Behaviour of some of the young people	19 %
Attitude towards the young people	19 %

Findings: 'nothing to do' must mean that the activities that are available are either:

- not of interest, b. inaccessible (actual or perceived) or
- difficult to participate in because of scheduling or commitment required etc.

Recommendations: The activity groups that already exist in the village need to assess their appeal to young people in the village. If these groups would like to extend a greater welcome to young people, they need to develop more creative ways of marketing their activities and engaging with the youth. This may require some modifications in order to heighten their appeal to young people either in terms of scheduling, the time commitment required for the activity, or enhancing the activity in some way e.g. forming a music group/band to support the lighting of the Village Christmas Tree. A few activities should be organised especially for the young people e.g. a skateboarding competition, tennis tournament, Wiske Water Challenge.

Q 10. Would you like to live in Appleton Wiske when you have left home?, you have a family of your own?, you are elderly?

Response:

	% Yes	% No
Left home	33	67
Family of your own	48	43
Elderly	48	48

Finding: This question requires further investigation in order to extract more meaning from the result. The lack of interest in remaining in the village could be linked to a number of factors such as the lack of work that would keep a young person in the village, the availability of adequate starter housing and the transport infrastructure linking the village to other local communities.

Q 11. Which gender are you?

Response: Female 62 % Male 38 %

Q 12. How old are you?

Q 13. How many years have you lived in Appleton Wiske?

Response: 50 % of respondents all their lives.
14 % been here for 10 years or more
14 % been here between 5 and 10 years and
19 % moved into the parish within the last 4 years

For Older Residents

- Broadacres Housing policy and allocation of single person dwellings
- Lunch/social group/activities would be beneficial.
- High reliance upon friends, neighbours and families by the elderly
- Many of the older residents are the most active in village organisations etc.

The Questionnaire brought out the fact that there are few residents of Appleton Wiske who have special needs and those that have, seem to be having most of their needs met - (carers/domestic help). However, as people grow older, their one main concern is the lack of a public transport service.

Older people would also like to have a range of activities in the village. The three interests that topped the poll were:

- to have trips and visits
- a Luncheon Club
- University of the Third Age.

Many of the older residents (don't forget 60+ is still young!) have offered help with visiting, car clubs, gardening/home repairs, shopping, hospital visits and lifts to airport or rail station. However, there were a few people who said they could use help. With this in mind, it would be helpful if some sort of central list could be drawn up so that people willing to help would know who, how and where to help.

It was good to see that everyone felt safe in the village during the day and only 3 were a little unsure about walking round at night.

The village surgery including the prescription service was well received but it was pointed out that the prescription service was for one practice only.

Several people felt that they would like to downsize in the village and a few more thought that they possibly would be looking towards downsizing in the future.

The overall impression was that most people thought that Appleton Wiske was a good community to live in – but if we can improve the community spirit by taking on board any of the suggestions then that can only be a good thing.

ANALYSIS OF QUESTIONNAIRE FOR OLDER RESIDENTS

1. Special Needs.	Yes	No	
	3	28	
2. Most important needs.			Public transport: Handrail up Steps.
3. Club Interests.			
Whist	3		
Bridge	5		
Canasta	1		
University of Third Age	8		
Lunch Club	9		
Trips and Visits	12		
Volunteer projects	6		
Other:	1		Art and Crafts
4. Can you help?	Offer	Use	
Home visits	7	1	
Car Club	7		
Gardening/repairs help	8	1	
Shopping	10	1	
Hospital visiting	7		
Airport/Rail station	12		
5. Visiting your Neighbours	Offer		
	19		
6. Safety in the Village.	Safe	Unsafe	Why/Where:
Day:	32	0	Prowlers: Car thieves:
Night:	29	3	Because getting older:
			"Teenagers make me uneasy."
7. Downsize?	Yes	Possibly	
	6	2	5 would like bungalows and 1 a 2 bedded home
8. GP and the Prescription Service			
	30		Prescription service only for one practice:
			Big queues in village surgery.

9. Suggestions			<ul style="list-style-type: none"> • Questionnaire should be for every member of household. • Footpaths on Hornby Road – to end of houses at Hornby end: • Lunch/social group would be beneficial. • 60+ is YOUNG! • PO should join "The Link" so all can withdraw cash. The machine should be 24 hour. • The old peoples' bungalows are now mostly singles (not OAP age) and not natives of Appleton.
-----------------------	--	--	--

APPLETON WISKE PARISH PLAN 2006

PLEASE COMPLETE AND RETURN TO THE
POST OFFICE BY
5th NOVEMBER 2006

The Parish Plan Steering Group would be grateful if you would spend a few minutes completing this Questionnaire.

There are special sections for the under 18's and the over 60's which will not apply to all households. The Initial Meeting raised many issues and these have been incorporated into the final version. This is your opportunity to contribute to the future of our Community.

All returned Questionnaires will be entered into a Prize Draw!

Thank you

Please
“cut off”
and keep safe!

Number:

Number:

SOCIAL, LEISURE, SPORT and EDUCATIONAL AMENITIES

1. Do you live in:

Front Street	
Baker Street	
Hunters Ride	
The Paddock	
Hornby Road	
Smithy Green	
Prospect View	
Outlying Properties	

2. How many people in your household including are in the following age groups?

0 – 4	
5 – 9	
10 – 15	
16 – 19	
20 – 24	
25 – 34	
35 – 44	
45 – 54	
55 – 64	
65 – 74	
75 – 84	
85 +	

3. How long have you lived in this area?
4. How long have you lived in your present home?
5. How likely are you to move out of your property in the next two years?
(circle only one)
- | | |
|-------------------|---|
| Very likely | 1 |
| Fairly likely | 2 |
| Not very likely | 3 |
| Not at all likely | 4 |
| Don't know | 5 |

6. An area of land in the centre of the village has been granted outline planning permission. What kind of housing would you like to see developed there?
7. What activities are you involved with in the village (what and where?)
8. Outside the village (what and where?)
9. What other activities would you like to see in the village?
10. Should more use be made of the village school / village hall for such activities?
Yes / No
11. How important is it to have a school in the village?

Very important / Important / Not important
12. Are there enough facilities / activities for children and young people in the area?
(If you are a teenager please answer the special section in the Questionnaire, photocopy extra sheets if required for all teenagers in the family)

Yes / No

If 'No' what else would you like to see

13. Which schools do your children attend?

14. Are any of your children in full time or part time employment?

Yes / No

15. and is it in the area?

Yes / No

PHYSICAL and SOCIAL ENVIRONMENT

16. How would you describe the appearance of the village?

Good	1
Reasonable	2
Poor	3

17. If you feel that anything spoils the appearance of the village what do you think could be done to improve the situation?

18. What do you like most about the Village?

19. What do you like least about the Village?

20. Are there any problems with the official play areas in the village?

Yes / No / Don't know if Yes please specify

21. Do you agree or disagree with the following statements about this area?

A: Agree

B: Disagree

C: Don't know

People here are friendly	A	B	C
People here are willing to help	A	B	C
There is a strong community spirit	A	B	C
This area is better than it was 10 years ago	A	B	C
I like living here	A	B	C
I sometimes feel lonely or isolated living here	A	B	C

22. Which of the following do you consider to be your local town(s)?

Northallerton

Darlington

Yarm

Richmond

Other please specify

23. Where do you usually do your food shopping?

At local shop	
At a local town supermarket	
At a city supermarket	
Other	

24. Is there a good choice of goods at a reasonable price in the local shop?

Yes / No

25. Approximately how often do you use the counter service at the Post Office?

Every / almost every day

Once a week

Once a month

Almost never / never

26. If you use the Post Office, what is this for?

Postal Services	
Pensions / Benefits / Allowances	
Banking etc	
Paying bills etc	
Other	

27. What other facilities / services would you wish to have?

LOCAL GOVERNMENT

28. Do the local Councils keep you well informed about their work and decisions?
Yes / No
29. How much influence do you feel you have over decisions made by local Councils?
- | | |
|-------------|---|
| A lot | 1 |
| Some | 2 |
| A little | 3 |
| Very little | 4 |
| None | 5 |
| Don't know | 6 |
30. Are you aware of the Community Strategy for your area?
- Yes / No

SERVICES, UTILITIES and FACILITIES

31. Which of the following would you use for advice, assistance or information?
(Circle as many as you need)

Library	CAB	Town Hall	Civic Centre
County Hall	Housing Office	Social Services	GP / Health Centre
Religious Group	Police	Others please specify:	

32. Do you have problems with any of the following? If so please specify:

a. ELECTRICITY

b. OIL and GAS

c. TELEPHONES and IT SERVICES (Broadband etc)

d. WATER

e. REFUSE COLLECTION and RECYCLING

Would you like recycling to be done by households and collected by the Council?

Yes / No

What additional recycling facilities do we need?

f. STREET LIGHTING

g. ROADS, PAVEMENTS and PATHWAYS

i. What and where are the problems, if any, with roads in the area? e.g. repairs, traffic, danger spots etc

ii. Have you any suggestions to resolve them?

HEALTH, SAFETY and SECURITY

33. How easy is it to use the following services?

- A: very easy
B: convenient
C: not very easy
D: difficult
E: not used / don't know

GP / Health centre	A	B	C	D	E
Chemist / Pharmacy	A	B	C	D	E
Health visitor/Community nurse	A	B	C	D	E
Dentist	A	B	C	D	E
Ante-natal clinic	A	B	C	D	E
Optician	A	B	C	D	E
Hospital in-patient	A	B	C	D	E
Hospital out-patient	A	B	C	D	E
Accident and Emergency	A	B	C	D	E

Additional Comments:

34. Have you used any of the following services in the last twelve months?

Yes / No (please circle relevant service)

Home Care	Y	N
Meals on wheels	Y	N
Respite care	Y	N
Day centre	Y	N
Occupational Therapy	Y	N
Home aids and adaptations	Y	N
Support from Social Services	Y	N
Adoption / Fostering services	Y	N

35. In the following situations who would you first ask for help?

- A: a family relative
B: friend/neighbour
C: doctor/community nurse
D: health visitor/social worker
E: other: (please list) _____
F: no one / not applicable

You are taken ill	A	B	C	D	E	F
Babysitting at short notice	A	B	C	D	E	F
Caring for family member at short notice	A	B	C	D	E	F
Transport at short notice	A	B	C	D	E	F
Transporting bulky items	A	B	C	D	E	F
Help with money matters	A	B	C	D	E	F

36. Do you, or anyone in your household, have a long term illness or disability that places limitations upon daily life?

Yes / No

37. Are there any adaptations which you need in your home?

Yes / No – please list them

38. Do you receive any help in your daily life from a friend or relative?

Yes / No

39. Are you caring for an elderly, long-term sick or disabled person on a regular basis?

Yes / No

40. If you receive support as a carer where does this support come from?

Social Services	
Carer's Group	
Partner / Spouse	
Other family/Relatives	
Friends/Neighbours	
Church / Faith Group	
Voluntary Group	
Other	
None received	

41. How should our Community Police Officer and Community Support Officer be used?

42. Have you registered for the Neighbourhood Watch Scheme?

Yes / No

43. Do you think that there needs to be any action to reduce crime in this area?

Yes / No (If Yes do you have any suggestions for action?)

TRANSPORT

44. Is car parking a problem for you?

Yes / No

45. How often do you travel to and from the village?

Never

Less than once a week

Once a week

2-3 times a week

more than 4 times

46. What is the main form of transport you use to travel to and from the village?

47. Is this to go to work / school / social activities?

Yes / No

48. How many passenger vehicles are there in your household? (Please circle)

1 2 3 or more

49. Do you have problems travelling to and from the village?

Yes / No

50. Do you have any suggestions for resolving these problems?

51. Would you be a volunteer to drive the village mini-bus, offer lifts into town or help in any other transport initiative?

AND FINALLY !

Please add any additional observations and recommendations that you feel would improve our community.

Are there any other concerns that you believe should be addressed and would make a positive contribution to our village?

Are there any projects you would like to see introduced to enhance our village?

Thank you for completing this questionnaire.

How would you like to receive feedback on the findings of the survey?

Public meeting

Newsletter

Posters / Public Notice

Other - please specify

Don't forget to take your Questionnaire to the Post Office and keep the ' Cut Off ' slip safe!

N.B. The next 2 pages are for our special interest groups, the under 18's and the over 60's !

YOUNG PEOPLE OF APPLETON WISKE !

Please help us to help you by answering this questionnaire as carefully as possible. ☺
For each of the choice questions, would you please circle your answer e.g. yes

Q 1. Do you make regular use of any of the following facilities in the village?
(Circle as many as are applicable)

Football field	Play Park	Skate park	Tennis Courts
Village Hall	Post Office	Shop	Green (Front Street)

Q 2. Would you be interested in attending a weekly Young People's evening within the village?

Yes No

Q 3. Would you like to have a youth council formed in the village, to promote the interests and address the concerns of the young people within our community?

Yes No

Q 4. Would you like to make use of a Study 'Quiet' Room during the week?

Yes No

Q 5. Which of the following would you be likely to attend/use if they were available for the young people in Appleton Wiske? (Circle as many as are applicable)

Music group/band	Chess league	Running/Walking Club
Singing group	Personal Growth Discussion Group	Bike/Cycling club
Drama club	Wildlife/Conservation	Aerobics/Yoga
Art/Crafts Club	Computers (with internet)	Dirt track for bicycles
Gardening Club	Basketball/Netball Hoops	Cricket Nets

Q 6. If the village minibus was to make a regular, scheduled trip for a couple of hours every weekend, where would you like it to go?

Q 7. Do you feel safe in the village:

in the daytime?

Yes

No

in the evening?

Yes

No

If you answered "no" please state where you feel unsafe and why.

Q 8. What do you like most about living in Appleton Wiske?

1. _____

2. _____

Q 9. What do you like least about living in Appleton Wiske?

1. _____

2. _____

Q 10. Would you like to live in Appleton Wiske when:

you have left home?

Yes

No

you have a family of your own?

Yes

No

you are elderly?

Yes

No

Q 11. Which gender are you? female male

Q 12. How old are you? _____

Q 13. How many years have you lived in Appleton Wiske? _____

Thank you for taking the time to complete this questionnaire.
Should you have any additional comments to make regarding this questionnaire,
please either attach them to the questionnaire or make them known to Karen Portsmouth
at Burnside, Hornby Road as soon as possible. Thank you. 😊

FOR THE OLDER RESIDENTS (i.e. the over 60s!)

1. Do you have any special needs or require extra support?

Yes / No

2. Please list the most important

3. Would you be interested in joining any of the following:
(please tick or circle)

- a. Whist / Bridge / Canasta Group?
- b. A Branch of the University of the Third Age?
- c. Monthly Lunch Club?
- d. Programme of Trips and Visits to local attractions?
- e. Volunteer to help other village projects?
- f. Other: please specify

4. Would you use, or could you offer any of the following (please tick or circle)

- a. Home visiting scheme
- b. Car Club
- c. Help with gardening and minor repairs
- d. Help with shopping
- e. Hospital visiting service
- f. Airport / Railway Station transport

5. Would you visit another resident or neighbour who was house bound or lonely?

Yes / No

6. Do you feel safe in the village:

in the daytime? Yes No

in the evening? Yes No

If "No" please state where you feel unsafe and why.

7. Would you like to "downsize" your home and what type of accommodation would you wish to move into?

8. Do you use the Village GP Clinic and does the Prescription Renewal Service meet your needs?

9. Please give any other suggestions you may wish to make: