



Appleton Wiske Parish Council Christmas Newsletter



2019

Merry Christmas from your Parish Councillors!

Hello and welcome to our new look newsletter, it's only a small edition due to Christmas being just around the corner, but next year we aim to publish 4 newsletters in Spring, Summer, Autumn and Winter and distribute to each property by volunteer residents in the first week of March, June, September and December.

Contributions from residents would be most welcome! We already know of the many fantastic activities in the village but we want to ensure we are capturing everything! We'd also like to introduce practical information and health and wellbeing support as well as a favourite seasonal recipe or a poetry corner. This is your newsletter so please do get in touch with suggestions! Copy deadline for each edition would be 5th February, 5th May, 5th August, and 5th November respectively. Please contact Michelle Thompson by email michelle@appletonwiske.com or phone 01609 881729.

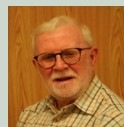
Calling all businesses/services!

We need your help to make our newsletter sustainable. Would you like to advertise in our newsletter? Distribution will be to all properties in the village and surrounding farms. Annual rates depend on the size of advert, and space permitting, and start from £40 per year for four editions.

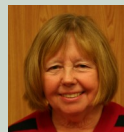
If you would like to advertise please contact michelle@appletonwiske.com or phone 01609 881729. Ideally you will supply your artwork in Microsoft Word format. If you want help with the artwork just ask.

Disclaimer: Whilst the parish council runs advertisements within the newsletter this does not mean their endorsement or otherwise of any of the contractors/advertisers

Who are we?



Derek Partington—Chair
chair@appletonwiske.com
01609 881617



Sue McDonnell—Clerk
clerk@appletonwiske.com
01609 881822



Ken Blackwood—Vice Chair
ken@appletonwiske.com
01609 881660



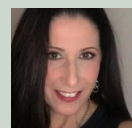
Richard Hauserman
richard@appletonwiske.com
01609 881015



Jackie McReddie
jackie@appletonwiske.com
07823 333075



Richard Johnson
richardj@appletonwiske.com
01609 881576



Michelle Thompson BEM
michelle@appletonwiske.com
01609 881 729

We have a Parish Council vacancy!

It could be you!



For further details contact
clerk@appletonwiske.com
or call 01609 881822



Dates for your diary

Weds 25th December	9:00 am	Christmas Day	Methodist Chapel
Tuesday 31st December	8:00 pm	New Year's Eve Dinner	The Lord Nelson Inn
Tuesday 31st December	9.30 pm	New Year's Eve Party	Village Hall
Sunday 4th January	10:30 am	Breakfast & Messy Church	Methodist Chapel
Thursday 9th January	7:15 pm	Appleton Wiske Panto	Village Hall
Friday 10th January	7:15 pm	Appleton Wiske Panto	Village Hall
Saturday 11th January	2:00 pm	Appleton Wiske Panto	Village Hall
Saturday 11th January	7:00 pm	Appleton Wiske Panto	Village Hall
Saturday 18th January	5:00 pm	Pantomime Social Event	Village Hall
Friday 15th May & Saturday 16th May	TBC	Appleton Amateur Actors present "A Comedy Play"	Village Hall



All communication to the Parish Council should be directed to the Clerk
clerk@appletonwiske.com or telephone 01609 881822

**Appleton Wiske
Village Shop and
Post Office**

**Pre-order a
fantastic range of
local produce every
week including
fresh meat, eggs,
bread, cakes,
pastries honey, veg
boxes and much
more!**

**Call Jackie on 07823
333075 or just pop
in and ask for
further details!**

How to stay well in winter

Some people are more vulnerable to the effects of cold weather. This includes: people aged 65 and older, babies and children under the age of 5, people on a low income (so cannot afford heating), people who have a long-term health condition, disabled people, pregnant women, people who have a mental health condition.

If you are 65 or over, or in one of the other at-risk groups, see a **pharmacist** as soon as you feel unwell, even if it's just a cough or a cold.

Pharmacists can give you treatment advice for a range of minor illnesses. They will also tell you if you need to see a doctor.

The sooner you get advice, the sooner you are likely to get better.

NHS 111 If you need medical advice when a pharmacy is closed, call: 111 or go to 111.nhs.uk

Get a flu jab if you are 65 and over, have a long-term health condition or if you are pregnant.

Ask for the flu jab at your GP surgery or at a local pharmacy.

Have a very Merry Christmas and a Happy New Year!