



# Appleton Wiske Parish Council

## Summer Newsletter

It's hard to believe that it's been a whole three months since news of the coronavirus pandemic was making the headlines and we were hurriedly adding COVID-19 information and support to our Spring newsletter. Taking advice from Hambleton District Council and adhering to Government guidelines we took the decision to tape off the village benches, close the playground, tennis courts and recreation field to keep our residents safe and discourage visitors from using them and potentially spreading the virus.

People rallied round and volunteered in all sorts of ways from helping with the village green grass cutting when the contractor had to stop for a while, helping neighbours with shopping and keeping spirits up with be-friending phone calls. Offering to share books and games, plants and whatever else they could offer the village during lockdown. The village shop and post office have been providing such a valuable service for us all with much needed supplies and The Lord Nelson's takeaway service every Friday, Saturday and Sunday has proved to be extremely popular and much appreciated.

Villagers enjoyed the lockdown VE celebrations in May with many of us decking our houses in bunting and enjoying socially distanced afternoon teas in our streets and gardens. Each Thursday we were out clapping to show our appreciation and support for all our key workers including local shops, delivery drivers and postal workers, refuse collectors and cleaners, emergency services and health care staff, teachers and chefs, community groups and volunteers, as well as friends, family, carers and neighbours.

Everyone responded to the various challenges we all faced and still face as we enter the new normal and the relaxed lockdown rules. The flower tubs in the village are looking lovely on Front Street and Hunters Ride and some of our parish councillors have been cleaning and repairing our village signs as they were looking very overgrown. We've also reported several problems with footpaths and gates to North Yorkshire County Council and they are now being repaired or replaced.

We need to say a huge thank you to Jackie McReddie who has sponsored this newsletter on behalf of the Village Shop and Post Office as her way of saying thank you to the whole village for your continued support for our local shop. Read more about their appreciation on page 4. Thank you also to Rachel Heald and Jen Mitchell who have both taken out adverts to support this edition. Finally despite the relaxation of some restrictions, the coronavirus has not gone away so please continue to keep safe and take care.

**Newsletter kindly sponsored by Appleton Wiske  
Village Shop and Post Office.**

### Inside this issue

Welcome .....	1
Parish Council .....	2
Health & Wellbeing .....	4
Appleton News .....	6

### Important Dates

20 Jun 1st day of Summer  
21 Jun Father's Day  
31 Aug Summer Bank Holiday  
20 Sep 1st Day of Autumn

### Parish Council Contact

All communication to the  
Parish Council should be  
directed to the Clerk  
[clerk@appletonwiske.com](mailto:clerk@appletonwiske.com)

tel: 01609 881822

### Volunteer/s Needed

Have you got a little time to lead and co-ordinate information which may be useful and helpful to our residents?

This could be via email such as letting others know if someone has any plants to give away, or if they are getting a delivery from Sam Turners that could benefit others who are in need of supplies?

Perhaps a couple of other people can support the lead with sharing information or messages with others.

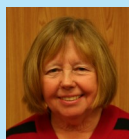
If you would like to be involved with this please contact Jackie McReddie in the village shop for more information.

# PARISH COUNCIL

## Who are we?



Derek Partington Chair  
chair@appletonwiske.com  
01609 881617



Sue McDonnell Clerk  
clerk@appletonwiske.com  
01609 881822



Ken Blackwood Vice Chair  
ken@appletonwiske.com  
01609 881660



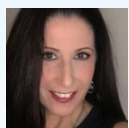
Richard Hauserman  
richard@appletonwiske.com  
01609 881015



Jackie McReddie  
jackie@appletonwiske.com  
07823 333075



Richard Johnson  
richardj@appletonwiske.com  
01609 881576



Michelle Thompson BEM  
michelle@appletonwiske.com  
01609 881729



Neil Slade  
neil@appletonwiske.com  
07796 212922

## What is a Parish Council?

A parish council is a local authority that makes decisions on behalf of the people in the parish. It is the level government closest to the community, with the district authority (Hambleton) above it in the hierarchy. As an authority closest to the people, parish councils are invariably the first place people will go with concerns or ideas. For this reason they are a vital part of any community.

## What decisions do Parish Councils make?

Parish councils make all kinds of decisions on issues that affect the local community. Probably the most common topics that parish councils get involved with are planning matters (they are statutory consultees), crime prevention, managing open spaces and campaigning for and delivering better services and facilities. A parish council can give the best reflection of how a community feels about something, and its views will be taken seriously.

## How often do Parish Council's meet?

Appleton Wiske Parish Council meet on the 1st Monday of each month (apart from August) at 7.30pm. Members of the public are welcome to attend, but is not a public meeting, it is a meeting held in public. This means that the meeting is held for the Council to conduct its business, in an atmosphere conducive to working and the public are permitted to attend to watch and listen to proceedings.

Meetings may last two or three hours, depending on the agenda set for the meeting to discuss. Only business contained within the agenda can be considered at the meeting.

All meetings are advertised on the village notice board. Residents can bring to the attention of the parish council anything that concerns them, either directly or through the clerk. If matters raised are not the responsibility of the council, the clerk can bring them to the attention of the proper authority.

## Are Residents allowed to speak or contribute?

It is not a necessity or requirement in law that the public are allowed to speak at a Parish Council meeting, but Appleton Wiske Parish Council allow a section of time at the beginning, within or at the end of a meeting to hear residents views.

## Are the Parish Council still meeting during the Covid-19 pandemic?

Yes the Parish Council is holding its monthly meetings online using ZOOM.

If any anyone wishes to join the meeting as a member of the public, please email [zoom@appletonwiske.com](mailto:zoom@appletonwiske.com) requesting the zoom meeting code and password. Attendees will receive information on how to join the "Zoom" meeting via the email address used to request access details.

The next meeting is Monday 6th July at 7.30pm

You can find the agenda and most recent minutes and documents on the village notice board and on the Appleton Wiske website [www.appletonwiske.com](http://www.appletonwiske.com)



# PARISH COUNCIL

## 20's Plenty



Hopefully many of you may remember that back in 2018, the Parish Council conducted a survey, which asked people whether or not they supported a 20 MPH speed limit within the village. The response was excellent and approximately 90% of those who responded, supported a move to such a speed limit.

The subsequent attempts to progress this at that time via, North Yorkshire County Council (NYCC) and North Yorkshire Police were unsuccessful, in large part because:

- a) they determined that there were no issues with the current speed limits,
- b) there were insufficient instances of injuries/fatalities to justify any changes and
- c) the costs for any changes to e.g. road signage, road construction (e.g. speed bumps) etc. was unjustified.

Behind the scenes the Parish Council has continued to explore how we can achieve a 20mph limit within the village. At the beginning of this year we were made aware of an organisation called **20's PLENTY FOR US**

This is a national, not for profit, organisation formed in 2007 which seeks to get residential road speeds reduced to 20mph. The Parish Council is currently discussing with 20's Plenty, about how to go forward. We do know that this topic is now being discussed by NYCC and that our local NYCC Councillor is supportive of the move. Currently there are over 200 local campaigns running in the UK including Darlington, Richmond, Scotton and Middlesbrough.

Also we have seen that Whitegates Nursery had the 20's Plenty signs at their entrance before Covid 19 lockdown!

One of the issues which has become exaggerated during the Covid 19 pandemic is speeding. Both the police, and NHS, have confirmed respectively, an increase in speeding during the lockdown, and also the increase of serious injuries of accidents at higher speeds.

If you are interested to know more or get involved in lobbying our representatives, then speak to any of the Appleton Wiske Parish Councillors, or visit the 20's Plenty website at [www.20splenty.org](http://www.20splenty.org) to find out more. We will keep you updated.

## Dog fouling & the law!

Dog mess is the most unacceptable and offensive type of litter in our village. Allowing your dog to poo and not clearing it up is not only deeply unpleasant, it is dangerous.

Whilst rare, contact with dog excrement can cause toxocariasis – a nasty infection that can lead to dizziness, nausea, asthma and even blindness or seizures.

Poo bags are also being dumped on farmland and private roads where livestock and horses can choke on them.

While most dog owners in our village are caring, responsible individuals, there are still some people who do not clean up after their pets.

Anyone who fails to clear up after their dog can be issued with a Fixed Penalty Notice of up to £100. If the case goes to court this could cost the owner or person in charge of the animal up to £1,000.

The law states that being unaware a dog has fouled or not having a suitable bag is not a reasonable excuse.

Whilst there are dedicated dog-fouling bins, any public bin can take the waste or you can simply take it home with you!

There is absolutely no excuse to leave it.





# HEALTH AND WELLBEING

## Are you a young person who needs help?

Whether you want to know more about how you're feeling, get information about a mental health condition or know what support is available to you, Youngminds can help. Visit [www.youngminds.org.uk/find-help/](http://www.youngminds.org.uk/find-help/)

If you need urgent help text

**YM to 85258**

Texts are free from EE, O2, Vodafone, 3, Virgin Mobile, BT Mobile, GiffGaff, Tesco Mobile and Telecom Plus.

**Every voice is important and needs to be listened to**

## Support for victims of domestic abuse

"Domestic Abuse is any incident or pattern of incidents of controlling, coercive, threatening behaviour, violence or abuse between those who are, or have been, intimate partners or family members regardless of gender or sexuality".

If you are isolated with abusive people whose behaviour is escalating due to increasing uncertainty, pressure on finances and cramped conditions, help is available.

For more information email IDAS on [info@idas.org.uk](mailto:info@idas.org.uk)

or call Supporting Victims on **01609 643100** or

[help@supportingvictims.org](mailto:help@supportingvictims.org)

## COVID-19 Guidance

As at 17th June 2020 (date of publishing this newsletter)

### You can:

- Form a 'support bubble' with one other household if you live alone or are a single parent with dependent children - in other words, you are in a household where there is only one adult. All those in a support bubble will be able to act as if they live in the same household - meaning they can spend time together inside each other's homes and do not need to stay 2 metres apart. Support bubbles should be exclusive - meaning you should not switch the household you are in a bubble with or connect with multiple households
- Attend your place of worship for the purposes of individual prayer
- You can visit any type of shop and some additional outdoor attractions - drive-in cinemas, and animal attractions like zoos, farms and safari parks
- Year 10 and 12 pupils in secondary schools and further education colleges will begin to receive some face to face support
- You have to wear a face covering on public transport
- You can meet outdoors with groups of up to six people from different households, provided social distancing is observed and you stay 2 metres away from anyone outside your household or support bubble.

### As before, you cannot:

- visit friends and family inside their homes (unless you are in a support bubble from 13 June) or for other limited circumstances set out in law
- stay away from your home or your support bubble household overnight - including holidays - except for in a limited set of circumstances, such as for work purposes
- exercise in an indoor sports court, gym or leisure centre, or go swimming in a public pool
- use an outdoor gym or playground
- gather outdoors in a group of more than six (unless exclusively with members of your own household or support bubble or for one of the limited set of circumstances set out in the law)

## APPLETON WISKE TENNIS CLUB

### COVID-19 Special Offer

Due to a restricted season we have reduced the Membership fees for the 2020 season:

**Adults** reduced to £20 from £30.

**Kids** reduced to £5 from £7

**Household** reduced to £45 from £70

If interested in joining please email

[tennis@appletonwiske.com](mailto:tennis@appletonwiske.com)

### Club nights

**Mens** – Monday 1800 hrs onwards

**Womens** – Wednesday 1700 hrs onwards and Thursday 1030hrs – 1200hrs

**Mixed** – Friday 1700hrs onwards

The courts are available at all other times for members on a first come first serve basis.

**Hand sanitiser is available in the courts and social distancing should be observed wherever possible**

# HEALTH AND WELLBEING



## A Lockdown Walk from Dick Simpson

When Sheila and I first moved to Appleton Wiske, I tried walking some of the footpaths around the village. However barbed wire, hedges and the absence of stiles made it pretty near impossible. I soon gave up, especially as we had such spectacular walking country just a few miles away on the Cleveland Hills. However, as the lockdown put the moors out of bounds, and our local roads seemed to be full of walkers and cyclists, I decided to have another look at our local footpaths and was pleasantly surprised. I have discovered three circular walks of about 6 miles, mostly using our local footpaths. The walk I will describe below follows the line of the Wiske before heading off towards Deighton. It takes me about 2½ hours.

Begin the walk on Front Street at the footpath sign adjacent to Anvil House. The path is well waymarked for most of the route and starts off following the River Wiske.

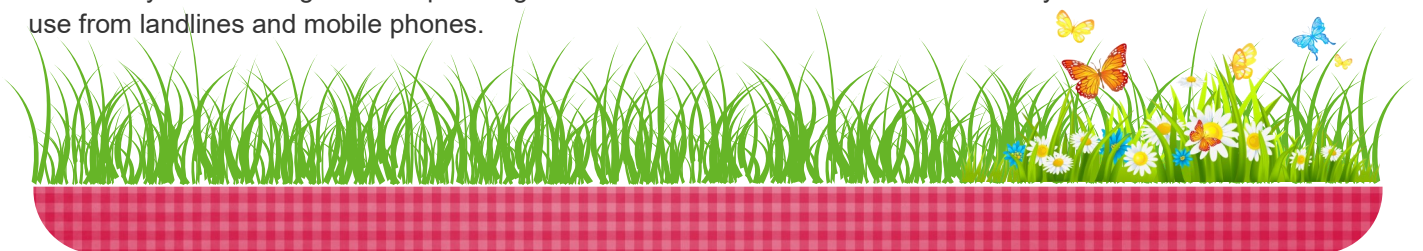
Alfred Wainwright in his Coast to Coast book describes the Wiske as 'a meandering river in search of a contour'. Therefore you can be assured that this is not a strenuous walk. However some parts will be muddy after wet weather. For dog walkers and those of a nervous disposition, there is one field with cattle, at Deighton, but this can be bypassed by walking along the road. The path passes through fields and woodland and always in the distance, there is the backdrop of the Cleveland Hills. There is also a lot more wildlife than you might think. Mallard and Heron occupy the Wiske, and skylarks can be heard above the fields. Apart from the usual crows, rooks, magpies and pigeons, house martins, swallows and swifts may accompany your departure from the village, and you may also see buzzards, lapwing and curlew along the way. I even saw an Oystercatcher the other day as well! Across the fields there is usually at least one hare sprinting away, and on several occasions deer have crossed my path as well. One thing you will rarely see is other people.

At Church Farm, the path crosses a small paddock and a field and then runs along the south side of the River Wiske. The path was diverted a few years ago, so follow the waymarks rather than the route shown of the Ordnance Survey map. After about half a mile, leave the Wiske and walk alongside the woods of Blackberry Plantation. Then after another field, follow the path through the woods of Holly Pond Plantation. The route is not easy to see here, but the waymark points you in the right direction. After leaving the woods and having walked a few yards along a fenced in path, another plantation appears. The path appears to go straight ahead, but you need to bear right to follow the line of the overhead power line. Waymarks then guide you past Blackberry Farm and through the back garden of Blackberry Grange. The waymarks and the sight of a gate at the other side of the garden are reassurances that you are on the right path.

Leaving Blackberry Grange, follow the mown path through the next field. Unfortunately, although path diversions are now behind us, the waymarks disappear as well! It is basically a matter of continuing in a straight line past the back of Valley Farm, along the field boundaries, until you reach Deighton Lane, the road from Deighton across to the A167. Turn left and follow the road for about a mile to Deighton. At Deighton, if time is pressing, a walk back along the road to Appleton may be necessary. The better option is to cross the road and take the footpath alongside the side of the churchyard. Crossing two fields of sheep brings you to the Roman Road, and the only field where cattle are present. Turning left takes you past a pond full of wildlife, then brings you back to the road towards Appleton again. You can decide whether to walk along the road or keep to the fields and woods. I prefer to turn right on to Mankin Lane, the bridleway which leads to Welbury. This gets very muddy in wet weather. However after about 700 yards, a path on the left, along the edges of the fields, past Summerfield House Farm and High Ingram Grange, brings you back to the Deighton road opposite Ingram Grange Farm.

On the warm sunny mornings of the last few weeks, this has been a delightful, tranquil walk which has revealed many aspects of our village and countryside that previously I never knew existed.

**North Yorkshire mental health helpline: 0800 561 0076.** If you need to discuss your mental health or that of someone you are caring for then please give us a call. This is a confidential and anonymous service and is free to use from landlines and mobile phones.



# APPLETON WISKE NEWS

## “Big Screen” Cinema in Appleton Wiske

Thanks to grants from Hambleton District Council and Northallerton Rotary Club, a large cinema screen has been mounted above the stage in the village hall. The screen can be lowered and raised as required without affecting the use of the stage for its usual activities.

The present lockdown will however prevent any screenings until it is safe for an audience whilst watching films.

The equipment needed to project the films and provide the sound system is available from Northallerton Rotary Club. It has been used for a number of years in Osmotherley Village hall where their Film Club presents regular monthly screenings for both children and for older audiences.

Once the lockdown restrictions are eased and it becomes safe for audiences to watch films, we can form a “Film Club” which will meet to decide on which films will be shown and to make the practical arrangements for the village hall. The projection equipment etc. will not be part of this group's activities.

## Village Shop and Post Office

The Coronavirus continues to cause irreversible havoc across the country. We're very pleased to see that two members of our small community have recovered, and are out and about walking their dogs again. Since March, customers at the Village Shop & Post Office have been met with the sign “One at a time please” – we're so grateful that you have followed this rule to keep yourselves, myself and Yvonne safe – thank you. The first 10-weeks of lockdown provided us with glorious sunshine and the wait outside the shop became an opportunity for neighbours to chat at a distance whilst waiting their turn.



As most of you are now aware at the beginning of 2020 it was touch and go as to whether the shop was viable enough to stay open. Many long days with very few customers was not conducive to a healthy financial environment and we feared the business would close. I must thank every single person who have been using the shop during lockdown – the shop is now a viable business. We have met new neighbours and welcomed people from all the surrounding villages, we have shopped for people, delivered for people and for that custom we are very, very grateful.

It is with more than a little trepidation that we go into the next phase of life in the village shop. If our community continue to use the facility in the same manner there will be a renewed regeneration of shop life. We are already stocking many more goodies and will continue to extend our ranges as best we can.

On Saturday 11<sup>th</sup> July we will be closing for two days, re opening on Tuesday 14<sup>th</sup> July in order to refurbish the shop. New fridges and freezers, shelves and counter space will enable us to offer a more professional service in a much more open and friendly environment. Please bear with us whilst we do this, we shall still have papers and milk on sale even if we must accommodate the bus shelter!

We would like to ask for some willing volunteers who would be able to help with some jobs in the shop such as painting and moving stock in the run up to the refurbishment weekend. We hope that during closed hours, with your help, we will be able to get the walls painted and ready for the new shelves etc. Please speak with us if you have any time to volunteer.

This is an exciting time for us as the business shapes and grows, and I hope that the community will stay with us and continue the unwavering support that we have experienced of late.

Contact Jackie: 07823 333075

PS Don't forget to follow us on Facebook. @VillageShopAppletonWiske





# APPLETON WISKE NEWS

**Written by an Appleton Wiske resident who wishes to remain anonymous.....**

Throughout the Coronavirus restrictions, there have been so many news stories in the media regarding how valuable local shops and permitted local services have been – and of course our very own Jackie got a well-deserved mention in the Darlington & Stockton Times. It didn't go unnoticed that the very morning after lockdown restrictions were announced by the Prime Minister, Jackie had hundreds of leaflets printed off and ready for distribution to us all offering help to those of us who may need it. Since then her efforts to support us all have been amazing, and she has worked tirelessly to ensure that our lives are as stress-free as possible.

Furthermore, let us not forget that other village stalwart – The Lord Nelson. On a day that my wife and I should have been on holiday in Crete, how wonderful it was to be able to pick up an authentic Moussaka and Greek Salad from our village pub, and sit down at home imagining we actually were in Crete!

Our village shop and village pub are at the centre of our community, and we are so lucky to have them here in Appleton Wiske. Once this is all over, and life returns to 'normal', let us not forget them, and find that we revert back to the convenience of billionaire-owned supermarket chains and drinks outlets, but let us all continue to support our village shop and village pub, and realise that friendship, consideration for others, and mutual care and support are what we all really need – and that is what our shop and pub can provide for us. We must continue to support them, and ensure that they are here for always.

## The Lord Nelson Inn



Thank you to everyone who has been supporting us through this crisis. We are absolutely thrilled with the response of all our lovely customers who have ordered takeaways from us.

We look forward to seeing you all again once we are able to re-open.

Best wishes Iain and Diane

**Tel:** 01609 881351

**E-mail:** [info@lordnelsoninn.com](mailto:info@lordnelsoninn.com)

**Facebook:**

[@LordNelsonAppletonWiske/](https://www.facebook.com/LordNelsonAppletonWiske/)

**Twitter:** [@Nellie\\_Appleton](https://twitter.com/Nellie_Appleton)

**Instagram:** [thelordnelsoninn](https://www.instagram.com/thelordnelsoninn)

## **Rebecca Heald - Fully qualified and insured Chartered Physiotherapist & ACPAT Veterinary Physiotherapist.**

Treating horses, dogs and other small animals for conditions of ageing, after surgery, injury, for poor performance, pain and lameness. Treatment facilities at Welbury and home visits/vet clinics covering North Yorkshire and the Northeast. Vet consent required to treat any animal.

For more information please contact;:

**[www.healdphysio.co.uk](http://www.healdphysio.co.uk) 07734958335**

**[rebeccajmheald@yahoo.com](mailto:rebeccajmheald@yahoo.com)**



**North Yorkshire Connect Community Directory (NY Connect)** is an online resource for people of all ages, helping them to find out about local activities, services, advice and guidance that is relevant, reliable and accessible 24 hours a day 7 days a week.

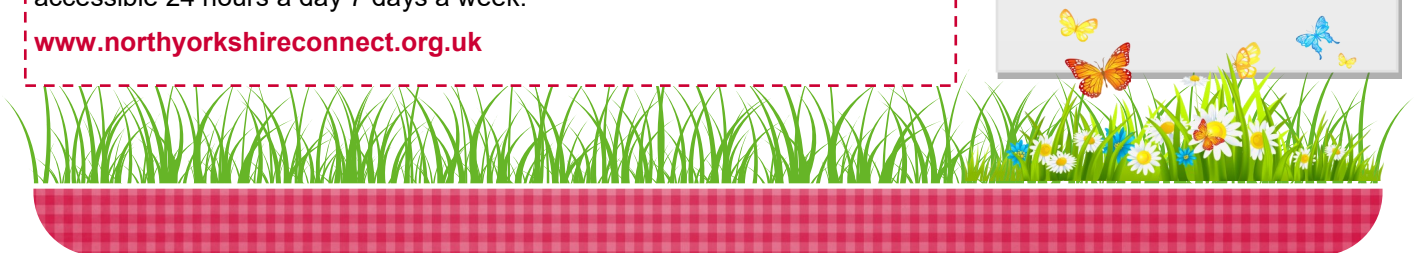
**[www.northyorkshireconnect.org.uk](http://www.northyorkshireconnect.org.uk)**

## **OIL BUYING GROUP**

The next bulk order for heating oil will close on Friday 10th July.

Those who are already members of the buying group will receive an email closer to that date with an invitation to place an order for delivery during the following 2 weeks.

Anyone wishing to join the group should send an email to **[oil01@btinternet.com](mailto:oil01@btinternet.com)** asking for details on how to join.



# APPLETON WISKE NEWS

## Appleton Wiske Pre-School

We are currently enrolling for September.

We are open every day from 8.30am to 3.30pm Monday to Friday Children are able to attend from the age of 2 years.

We have free spaces for 3 & 4 year olds 30 hours free childcare with the relevant 30 hour code. We also have free spaces available for eligible 2 year olds.

Pre-School run out of Appleton Wiske Village Hall. We are small friendly, nurturing fun and caring Pre-school in a stunning rural North Yorkshire setting, which is in a peaceful rural location..

To the rear of the village hall we have a fantastic fun outside area so that the children can get outside on a daily basis.. We also hire the village mini bus so that we can take the children out on fun day trips and activities to enhance the learning of the subject that we are currently learning about within Pre-School.

Come and meet the team or contact us on:

**07483 875119**

**aw.preschool@icloud.com**

**www.appletonwiskepreshool.co.uk**



## North Yorkshire Police

### Coronavirus-related scams

As Covid-19 continues to spread, fraudsters are likely to continue using the anxiety it generates to trick people out of their personal data and hard-earned money.

More than ever, as a community please be aware of those in your locality who are elderly, live alone and who are vulnerable.

Please look after and support each other and report anything suspicious to the police. North Yorkshire Police are here to help you.

**Scam emails can be forwarded directly to the National Cyber Security Centre on:**

**[report@phishing.gov](mailto:report@phishing.gov)**



*Jen Mitchell*

PHOTOGRAPHY  
FAMILY • PET • EQUINE

Family, pet and equine photographer offering on location photo sessions.

Capture the moments that matter.

[www.JenMitchell.co.uk](http://www.JenMitchell.co.uk)

[JenMitchellPhotography@outlook.com](mailto:JenMitchellPhotography@outlook.com)

0770 828 4127



## Appleton Wiske Community Primary School

I hope this finds you all healthy and well. It has been many weeks since the school closed for the majority of our pupils. We have, however, remained open for children of Key Workers and have provided online learning for all the pupils at home. We are blessed with a fantastic team at Appleton Wiske who have adapted to many challenges at this difficult time. Likewise, our wonderful pupils have been making the best of the situation and the messages of support from our parents and other members of the community have been much appreciated. Over the last few weeks we have kept the community spirit going as much as possible and have enjoyed several virtual events, such as the Easter Egg competition, Teddy Bears Picnic, school quiz and whole school assemblies. We have now welcomed more children back to school in some year groups and we look forward to a time when it is safe for all of our children to return. Best wishes

Neil Clark  
Head Teacher

