



Appleton Wiske Parish Council Winter Newsletter

The season of love, lights and quiet contemplation.

We have officially entered the winter season, traditionally a period of joy and happiness, of sparkling lights and excitement, of reflecting on the year almost past and for expressing the love and gratitude in our hearts for those who have touched us with theirs.

Symbolically December is usually a month for gathering with family and friends but this year will be very different for all of us. The government have urged us to take personal responsibility this Christmas to limit the spread of the virus and protect our loved ones, particularly if they are vulnerable.

One in three people with coronavirus (COVID-19) have no symptoms and will be spreading it without realising it. The more people you see, the more likely it is that you will catch or spread coronavirus.

We are all desperate to see our family and friends after such a difficult year and many of us have formed small bubbles, but there will be some of you in the village who will be spending Christmas alone, For some it will be your idea of bliss, but for others it is the worst possible scenario. We have included plenty of tips for how you can still get into the Christmas mood on page 5 which we hope you find useful.

It's a magical time for our little ones and our articles on pages 8, 9 and 10 perfectly capture the spirit of Christmas, plus also look at all those beautiful lights around the village on the back page. An evening walk around the village is a real sight to behold!

Thank you to everyone who has supported our local shop and post office and the Lord Nelson. It is not easy for businesses at the moment and thanks also to all our residents for the kindness shown to your neighbours and friends throughout the year.

Finally, if you have any ideas, concerns or suggestions for future newsletters or for the Parish Council to discuss at our meetings, please do get in touch!

We wish you a safe and Merry Christmas and a healthy and Happy New Year!



Inside this issue

Welcome	1
Parish Council	2
Health & Wellbeing	4
Appleton News.....	6
Christmas Lights	12

Parish Council Contact

All communication to the Parish Council should be directed to the Clerk:

01609 881822

clerk@appletonwiske.com

News email

We frequently circulate "News" by email. If anyone wishes to receive a copy please email news@appletonwiske.com.

We will also put updates on activities on our website if the organisation or group can email us.

Facebook

Follow us! @appletonwiske
If you like our newsletter or website you're bound to enjoy following us on social media!



PARISH COUNCIL

Who are we?



Derek Partington Chair
chair@appletonwiske.com
01609 881617



Sue McDonnell Clerk
clerk@appletonwiske.com
01609 881822



Ken Blackwood Vice Chair
ken@appletonwiske.com
01609 881660



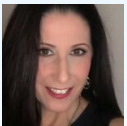
Richard Hauserman
richard@appletonwiske.com
01609 881015



Jackie McReddie
jackie@appletonwiske.com
07823 333075



Richard Johnson
richardj@appletonwiske.com
01609 881576



Michelle Thompson BEM
michelle@appletonwiske.com
01609 881729



Neil Slade
neil@appletonwiske.com
07796 212922



A Happy Christmas from Appleton Wiske Parish Council

Derek Partington "On behalf of the Parish Council I would like to wish all our residents a Happy Christmas and a much better new year. This year has been traumatic for everyone. Fortunately we have had very few Covid-19 cases in the parish but even a few is too many and some of the people who contracted the virus have been seriously ill. Thankfully they seem to be fully recovered. It has been a difficult year for the Parish Council as we have had to conduct our meetings via Zoom rather than meeting face to face. I hope that you can see via the minutes that we have tried to cover all the issues and problems raised by parishioners and resolve them wherever possible. I would like to thank all Parish Council members for their support over this period, not forgetting our County Councillor, David Hugill, and District Councillor, Steve Watson, who have been present at most of our Zoom meetings and have continued to give us their help. I would like to take this opportunity to thank Ken Blackwood and his team of helpers for organising the flu vaccinations in the Village Hall and hope that we may be able to organise something similar for our Covid vaccinations. I think we all owe our thanks to Jackie McReddie who has not only kept the shop open supplying us with all sorts of goodies as well as essential items and has also taken the opportunity to transform the premises into a shop with a real village feel. Have a safe and healthy 2021"

Jackie McReddie "As a parish councillor working with the parish council team and everyone in the village, I would like to think that in the next year we can all work together on projects such as tidying the centre of the village, the parking problems that we seem to have at present and the speed in which vehicles come into and through the village. But mostly, after a very difficult year for many I would like to wish everyone a Happy Christmas, stay safe, keep well and look after each other."

Michelle Thompson BEM "Communication skills, especially listening are something I feel passionately about. My day job is to ensure that the patient, carer and public voice is heard at the very heart of local, regional and national NHS decision making as well as local government. Working together is key and as your parish councillor I hope that in the coming year I can use these skills to listen to your ideas, suggestions and concerns and to contribute to the amazing community spirit you have all shown during this incredibly difficult year. Wishing you all the very best for a happy and safe Christmas!"

Ken Blackwood "We are fortunate to live in a community where many



PARISH COUNCIL

people just “get on with it” voluntarily. When the minibus runs its weekly service into Northallerton, the drivers, who have all passed the additional Minibus Driver training and assessment, make sure the passengers are safely picked up and delivered back each Wednesday. The booking diary is maintained and insurance, tax, MOT and safety tests are all carried out on time. The Village Hall is there for the many activities that are on offer whether it's badminton, Zumba, quizzes or special events, the building is looked after and kept clean. The Pre-School continues to use the Village Hall every day. Now that the cinema screen has been installed, there will be at least one more activity. There are the coffee mornings in the chapel (where you can keep up to date with what's going on) the art afternoons, the family history, the young children's sessions and more as well as the services each Sunday. The Friends of St. Marys church have held events which have provided funds for the renovation of the porch, new noticeboards, a bug hotel and are raising funds to repair the roof. We can have our medicines delivered to our doorstep or the village shop, and after the Covid restrictions have been lifted visit the doctor in the village hall surgery again. We have a primary school which has remained open throughout the lockdown, especially for the children of key workers. For those who enjoy the outdoors there's the Walking Group, the tennis club. For younger residents there are weekly cub and guide meetings. . We have a village shop and post office. A chip van on Tuesdays. A Library in the bus shelter. A pub where you can get a take-away meal and in “normal” times join the fortnightly quiz, play darts and dominoes and enjoy good food. I'm sure to have missed many other organised activities for which I apologise. Where else in a village the size of Appleton Wiske could you get such a variety. The message is if it's something you'd like to do and it's not available, why not organise it for yourself and others.”

Richard Hauserman “The push to get a reduction in the speed limit within the village continues. NYCC has only last month decided to review its position on 20mph limits based on the report and recommendations of the “ Transport, Economy and Environment Overview and Scrutiny Committee”. The report and the recommendations are lengthy but are definitely a step in the right direction with regards to how NYCC will evaluate the need for 20mph zones or limits in the County. Particular focus has been given to the roads approaching and outside of Schools. For now if you want to see the report and recommendations in full then please visit <https://democracy.northyorks.gov.uk/FunctionsPage.aspx?dsid=90776&action=GetFileFromDB> If you have any questions/ comments please get in touch with one of the Parish Councillors. Best wishes for a Merry Christmas and a much Happier New Year!



Councillor David Hugill
North Hambleton
NYCC Division
Cllr.david.hugill@northyorks.gov.uk

“The government has ordered us to get rid of the nine councils that currently make up North Yorkshire and York's two tier local government system and put in place a unitary local government. Six of the seven district and borough councils are proposing to create two brand new councils across North Yorkshire and York in an east/west split.

However I believe in a once-in-a-generation opportunity for North Yorkshire to step forward as a single unitary council working in a new, close partnership with the City of York, combining the strengths of both councils.

North Yorkshire has an enviable identity – one of the strongest of any English county. Our brand is globally renowned for its culture and spectacular landscapes We are proud of our history and the contribution we make to the UK economically, politically and in the arts and sport. Our towns and market towns have a rich heritage and we are known for our hospitality, generosity, sense of community and resilience.

We must get this right “



APPLETON WISKE NEWS

Looking out for others

During Christmas and the winter months there will be people in the village who may feel isolated and alone. The smallest displays of kindness, like picking up the phone to check-in on someone or offering to pick up some shopping, and the conversation that follows, could make the biggest difference.....

Be Aware

Watch for the warning signs that someone might be struggling. This is more challenging during the Covid-19 crisis, and we may need to be more pro-active about checking in with others by phone and online.

Ask

Trust your instincts and ask the person directly how they are doing. If necessary, ask twice. "Are you really OK?". If you feel they may be struggling let them know that you are worried about them and that you care.

Listen

Give them time and space to talk and be helpfully nosy.

Build Support

Explore what help they might need.

Check-in

Keep checking in and letting the person know you are there for them. Knowing someone cares can make all the difference.

Village Hall News

Tote Draw: Due to Covid 19 restrictions we were unable to complete our collections until early December, or to make any of our usual monthly prize draws. We have instead made a special Christmas draw with the following winners and their winning numbers:

First Prize £150:

Simon Golding (9-16)

Second Prize £100:

Michelle Street (4-8)

3x Third Prizes £50:

Jane Craven (2-21)

Sue Pope (11-12)

Peter Harding (4-9)

16x Fourth Prizes £25

Michelle Street (20-21)

Sue Boddy (3-12)

Ben Donald (15-16)

Robert Johnson (11-20)*

Ian Stansfield (9-11)*

Ian Stansfield (9-11)*

Ruth Dawes (10-12)

Richard Johnson (16-17)

Robert Johnson (11-20)*

Denise Graham (2-16)

Helen Healey (15-20)

Keith Davy (13-21)

Judith Lightfoot (4-19)

Lawrence Naismith (2-8)

Howard Dawson (8-10)

Richard Johnson (1-2)

(* These numbers were separately drawn twice)

50% of the total monies collected are distributed as prizes, with the balance helping to fund the running costs of the village hall, which is a valuable community asset. For more than the past twenty years, the annual subscription has been £12. There have been eleven monthly draws for one prize each of £30, £20 and £10, with larger prizes in the Christmas draw. We are making changes for the future with the aim of offering more attractive prizes. The annual subscription will be £15 for one pair of numbers, and there will be four prize draws made in spring, summer, autumn and at Christmas. The amount of the prize fund depends on how many subscribers we have, but we hope to have prizes of around £100, £50 and two of £25 for each of the first three prize draws, and around double these amounts for the Christmas draw. We would like to increase the number of members in the Tote Draw to enable us to reach our target. There is no limit to how many pairs of numbers one person can hold. If you would like to support the village hall by becoming a member, or if you are an existing member and would like to increase your numbers held, please contact Brian Rawling; brianrawling@gmail.com or phone 01609 881628.

Village Hall Committee We are looking for one person to fill a vacancy on our committee to help with the running of the hall. In a "normal" year, the committee meets on about four occasions plus an AGM in March or April. If you are interested in joining, or would like an informal chat, please contact Brian Rawling

HEALTH AND WELLBEING

Six things to do if you're alone for Christmas

As much as we'd all love to spend time with friends and family, sometimes it just isn't possible, and with coronavirus restrictions in place some will be unable to see others over the festive period. Spending the day without family can still be enjoyable though, Here are a few ways to celebrate it by yourself:

It's your day!

No family drama? No obligations to be somewhere you really don't want to be. Plan your day around a list of fun things you like to do, and if you wake up and want to do something completely different, not a problem! It's your day to enjoy at your own leisure.

Treat yourself

We all know how happy those little treats can make us, and it doesn't have to break the bank. Gift yourself with a mixture of goodies - functional and frivolous - including something delicious (and boozy if you want!) to tuck into on the day.

Wrap up and walk

Head out of the house for some one-on-one time with nature - everything outdoors seems to slow down and become more peaceful. Why not offer to take a neighbours' dog with you, if they're going to be too busy to go for walkies themselves? Dogs are wonderful company!

Keep yourself occupied

If you're worried that slowing down and taking things easy on Christmas day will exacerbate your loneliness, keeping yourself busy and focused on something can help to distract yourself, and may actually help you enjoy the day. Here are a few suggestions:

- Read a novel you've been wanting to dive into for ages (or reread your all-time favourite).
- Cook a decadent recipe you've been wanting to try. Best accompanied with your favourite radio station or podcast, and a glass of the tipples of your choice.
- If there's a craft or hobby you've been wanting to try for a while, why not treat yourself to a starter kit?

Useful helplines open over Christmas

Samaritans	116 123
Mind	0300 123 3393
National Debtline	0808 808 4000
Cruse Bereavement Care	0808 808 1677
Macmillan Cancer Support	0808 808 00 00
Age UK	0800 055 6112
The Silver Line	0800 4 70 80 90

Children and Young People's Mental Health and Wellbeing Support

Children and young people have had their lives turned upside down by the pandemic. Almost every young person has had to adjust to dramatic changes in their education or employment, routine and home life. For help and support visit:

KOOTH offer free, anonymous, online counselling and wellbeing support for young people aged between 11-18 across North Yorkshire and York. Visit www.kooth.com

BUZZ US is a text messaging service for young people aged 11-18 experiencing mental health and wellbeing difficulties. Visit www.compass-uk.org/buzz-us or call 07520 631168.

THE GO-TO is the home of wellbeing and mental health for young people in North Yorkshire visit www.thegoto.org.uk/coronavirus-information

YOUNG MINDS is a free 24/7 support service. If you need urgent help, text YM to 85258. There is also a Parents Helpline: 0808 802 5544 (Mon to Fri 9.30am – 4pm, or visit www.youngminds.org.uk)



APPLETON WISKE NEWS

Tier 2 Restrictions

Tier 2 High alert

Around 1 in 3 people with Covid-19 have no symptoms so will be spreading the virus without realising. For more information and detailed guidance visit: gov.uk/coronavirus

MEETING FRIENDS AND FAMILY

No mixing of households indoors, apart from support bubbles. Maximum of six outdoors.

BARs, PUBS AND RESTAURANTS

Pubs and bars must close, unless operating as restaurants. Hospitality venues can only serve alcohol with substantial meals.

RETAIL

Open.

WORK AND BUSINESS

Everyone who can work from home should do so.

EDUCATION

Early years

OVERNIGHTSTAYS

Permitted with household or support bubble.

WEDDINGS & FUNERALS

15 guests for weddings, civil partnerships, wedding receptions and wakes; 30 for funerals.

PLACES OF WORSHIP

Open, but cannot interact with anyone outside household or support bubble.

TRAVELLING

Reduce the number of journeys you make and walk or cycle if possible. Avoid busy times and routes on public transport. Avoid car sharing with those outside of your household or support bubble. Avoid travelling outside your area,

Appleton Wiske Village Shop and Post Office

Opening hours for the Village Shop and Post Office:

"There will be a few small changes to the opening and closing time in the shop and Post Office, this is to enable both Yvonne and I to recharge our batteries, have a gin and tonic or two and be ready to start the new year.



Can I just say a very big thank you to all our customers who rallied round when times were hard and have now enabled the shop to become a viable business. I hope that you all continue to support us and carry us into a new year" Jackie x

Changed Hours as follows:

Thurs 24th Dec: 6am to 12 noon

Xmas day: YES closed!

Sat 26th Dec: Closed but all ordered papers will be in the porch to collect

Sun 27th Dec: 9am to 11am only

Thurs 31st Dec: 6am to 12 noon

New Years Day: Closed but all ordered papers will be in the porch to collect

Sat 2nd Jan: 6am to 12 noon

Sun 3rd Jan: 9am to 12 noon



The Lord Nelson Inn

Tel: 01609 881351

E-mail: info@lordnelsoninn.com

Facebook:

@LordNelsonAppletonWiske/

Twitter: @Nellie_Appleton

Instagram: thelordnelsoninn

We would wish everyone a Merry Christmas and a Happy New Year! Thank you all for your kind and continued support in these difficult times. We hope to see you all back in the pub soon.
Diane and Iain.

APPLETON WISKE NEWS

Prawn and Chicken Gumbo

Ingredients

- 2 boneless, skinned chicken fillets
- 100ml vegetable oil
- 8 chicken thighs, bone in, skin on
- 4 rashers of streaky bacon
- 500g chorizo sliced
- Plain flour
- 2tsp cayenne pepper
- 2tsp paprika
- 1 large onion diced
- 2 green peppers, diced and cored
- 4 celery sticks diced
- Grated garlic cloves
- 1 litre chicken stock
- 500ml tomato juice
- 250g peeled raw tiger prawns
- Salt and freshly ground pepper to season



A beautiful light dish just perfect for Christmas Eve!



1. Cut each chicken breast into four even sized pieces.
2. Heat the oil in a large heavy-based saucepan over a medium heat.
3. When hot add the chicken thighs and chicken pieces and sear until brown for a few minutes, don't overcrowd the pan. Set aside when done.
4. Return the pan to a medium heat, add the bacon and cook for a few minutes, set aside with the chicken.
5. Now add the chorizo and do the same again.
6. Place the pan back on the heat and add the flour to the juices and stir constantly for about 8 minutes to cook out the flour, this will make a thick paste.
7. Once it is a dark golden brown, add the paprika and cayenne pepper and cook for a further minute.
8. Add the onions, peppers, garlic and celery to the pan and cook until the vegetables soften a little, then return everything back to the pan including all the juices from the plate.
9. Pour in the chicken stock and tomato juice and bring to the boil, then lower the heat and simmer gently for about one hour.
10. Add the prawns and cook for about 2-3 minutes until they turn bright pink, season well and throw in some chopped parsley.
11. Ladle into warmed bowls and enjoy, gorgeous served with steamed rice.

Recipe courtesy of Jackie McReddie.

USED CHRISTMAS TREE COLLECTION



On January 9th 2021 members of East Harlsey Cricket Club will be offering a Christmas Tree collection and disposal service. We will be offering an extremely cost effective and convenient way of disposing of your unwanted festive firs.

Just £5 per tree (up to 8ft, please contact for a price for anything larger)...multiple trees accepted. All we ask is that the tree is ready outside by the given time for us to collect you don't even need to be in!

If you live in the East Harlsey, Rountons, Appleton, Welbury or immediate surrounding area simply drop us an email to book your tree in. We will provide bank details for a transfer and once payment is received your collection will be confirmed. Take away all the hassle of chopping up the old tree and let us collect and dispose of your tree safely. Contact us by email ehcctrees@gmail.com



APPLETON WISKE NEWS

The Book Stops Here!!

As some of you will be aware, there is now a book sharing facility in the old bus shelter. It started with just a handful of books on a table at the beginning of lockdown but has now grown significantly.

Temporary shelving has been erected and books sorted in a more user-friendly way. There are a range of books for all ages.

There are Covid guidelines for usage on the wall.

It seems popular and may eventually become a permanent fixture dependent on continued responsible usage and support. to prevent it becoming an untidy eyesore.

Please therefore note:

- It is a book sharing facility with limited capacity; please do not leave books that should be going to the tip/recycle.
- Please do not leave carriers/containers full of books on the floor; place a few suitable books on the shelves.
- Please do not leave DVD's due to the age ratings/ censorship/parental awareness needed etc .
- Please do not leave toys or games
- Please do enjoy reading, your support is much appreciated!

Appleton Wiske Community Primary School

I am incredibly proud of our pupils. They have embraced school life this term under challenging circumstances, displaying consistently positive attitudes and outstanding behaviour. We are also blessed with fantastic staff and supportive parents who want the very best for their children. The link between school and home is as strong as ever and we look forward to a time when we can open our doors to visitors once again.

Earlier this term, one of our Co-Chairs of the school's Governing Body carried out a visit in order to evaluate the safety measures and procedures which have been in place since returning to school in September. It was agreed that we are implementing the Risk Assessment effectively, and I would like to thank the staff, pupils and parents/carers for playing their part in keeping everybody safe.

We have enjoyed a wide range of events this term, such as Year 5/6 young leader training, forest school, celebration assemblies, harvest performances, anti-bullying week, long-distance running, archery, golf and orienteering. We have also supported charities such as the Poppy Appeal, Children in Need and Cancer Research. We are currently taking part in a new initiative called Defenders of Health which promotes and raises awareness of global health. We have been in the local newspapers and you can read about it here: <https://www.thenorthernecho.co.uk/news/18874091.appleton-wiske-primary-school-pupils-support-global-health-project/>

Thank you for your continued support.

Neil Clark Head Teacher
Appleton Wiske Community Primary
School



KIDS CORNER!

Colour me in!



Emergency Contacts

Use the following list of contact details for reporting emergencies or dangerous incidents which occur out of office hours.

Hambleton District Council (all services including Environmental Health): 01609 779977

Flood

Line: 01609 779977 - Press 1 for sandbags

Stray

dogs: 01609 779977 - Press 2

Homelessness: 01609 779977 - Press 3

Northumbrian

Water: 0845 7171100

Out of hours Social Services emergency number: 01904 762314

Yorkshire Water (supply): 08451 242424


Yorkshire Water (sewerage): 08451 242429

Powercuts

You can call 105 to report or get information about power cuts in your local

A	S	C	F	G	I	F	T	S
O	A	T	L	O	P	H	W	Y
H	N	Z	E	U	T	X	D	O
O	T	U	O	A	R	P	C	K
L	A	K	E	B	H	R	O	A
L	P	R	T	H	B	E	L	L
Y	W	E	K	C	O	S	P	H
B	Q	K	D	O	I	N	W	E
C	H	R	I	S	T	M	A	S

SANTA
CHRISTMAS
WREATH
BELL
ELF
GIFTS
SOCK
HOLLY



↑ ↓ ← → ↖ ↗ ↘ ↙



APPLETON WISKE NEWS

AFRICAN JEWELLERY & HANDICRAFTS SALE

A superb opportunity to buy unusual and unique Christmas presents!

Our fourteenth annual African Handicrafts & Jewellery Sale was due to take place in November, but was cancelled due to government restrictions so we have decided to offer them for sale using our website www.meseraniproject.co.uk and then you can collect them from our front doorstep or our garage. Payments can be made by bank transfer into the charity bank account, by cash, or by cheque. You can place your order by either dropping a note through our letter box (please include your telephone number) or you can e-mail your order to us at meserani@hotmail.co.uk

We will then arrange a time for you to collect it. We have too much stock to be able to show everything on this website, so if there is anything specifically that you wanted, but can't see it on the website, please get in touch.

The Meserani Project prides itself in that there are no expenses taken out of any fundraising or donations – so 100% of the takings from this sale go directly to the young people in Tanzania who are being given a lifeline in terms of being able to access an education.

**Diane & Peter Swan
Meserani, Hornby Road,
Appleton Wiske, DL6 2AF.**

Appleton Wiske Preschool

Appleton Wiske Preschool would like to thank the whole community of Appleton Wiske for all the support given to us during this weird and difficult time.

Thank you all so much for helping us raise money by joining our Fundraiser Bingo Lotto. Preschool promised to provide half of what we received from people joining in to play Bingo Lotto prize money and so the winner will receive £830. We currently have 5 people as front runners with 4 numbers out of their 6. It would be great for someone to win by getting all of their 6 numbers before Christmas. People are already asking once it is won will we be doing it again and we will.



A huge thank you must go to the girls in the village shop Jackie and Yvonne for promoting our fundraisers and selling raffle tickets for 2 super hampers donated by Appleton Wiske Preschool staff and parents. The draw was done in the shop on Saturday 19th December, well done to Sarah Thackray for winning first prize and Liz Evans for winning our second prize hamper! Unfortunately we have had to cancel all of our major fundraisers that would normally contribute to keeping the Preschool up and running so really do appreciate all your support. We have been overwhelmed by the kindness and support of people in our community and are very proud to say that we have been part of this wonderful community for over 40 years and when the going gets tough we know we can rely on the village to support our fundraisers.



Anonymous donations and letters of support from current and past parents have kept our spirits up and words of kindness about how your children do and have thoroughly enjoyed their time at our wonderful rural Preschool have brought us to tears of happiness. Please check our Facebook page out as the children have done Christmas song performances. On behalf of all the staff and children we would all like to wish everyone a wonderful Christmas and let's hope the new year brings everyone good health and happiness. Merry Christmas everyone!

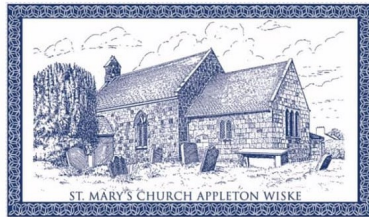
Liz Huckle Appleton Wiske Preschool Manager

APPLETON WISKE NEWS

Happy Christmas and a very Happy New Year from The Friends of St. Mary's.

Church Services (please see St. Mary's noticeboard for details)
25th December 11.00am St. Eloy's Great Smeaton, Rev. Lynn Thorius
10th January 11.00am St. Mary's Appleton Wiske, Rev. Lynn Thorius
17th January 11.00am St. Eloy's Great Smeaton, Rev. Lynn Thorius

Our £6 tea towels have been selling very well! If you would like to buy one we still have some left. They are 100% cotton with a recyclable outer rapper.



Many thanks as always for your continued support and encouragement. If you would like to join us please contact a committee member or email us at friends@appletonwiske.com

All the best for 2021!

COVID vaccine rollout in North Yorkshire

A number of GP practices in North Yorkshire have begun administering the first doses COVID vaccine to patients over the age of 80. Vaccinations are being delivered according to priority groups. Dr Charles Parker, the clinical chair of NHS North Yorkshire Clinical Commissioning Group, said: *"This is a significant milestone in the vaccination programme, but just the start of a process that will likely take several months."*

GP practices are experts in the administration of vaccines, with thousands of patients given the flu jab every year." Amanda Bloor, NHS North Yorkshire CCG Accountable Officer and chair of the North Yorkshire group of NHS and local government Chief Executives, added: *"We understand patients' enthusiasm to have the COVID vaccine, but it's important those at most risk from coronavirus are vaccinated first. Please do not contact your local GP Practice or local hospital to ask for an appointment for a vaccination – the NHS will contact individuals as part of the vaccination programme and nobody will miss out."*

Appleton Wiske Methodist Church "The Chapel"

December chapel dates as below.

Please let Karen know if you intend coming to any of these services, and how many seats for family/ bubble.

24th Rob - Christmas Eve reflection
4.15pm

25th Revd Arthur Harbottle 9.30am
27th No service here! District
service online.

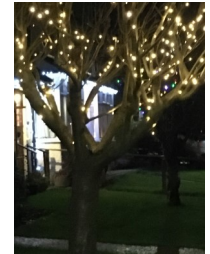
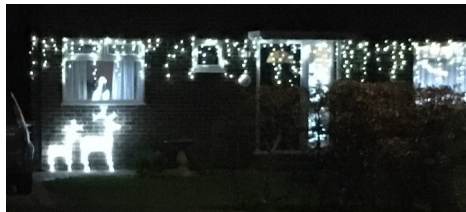
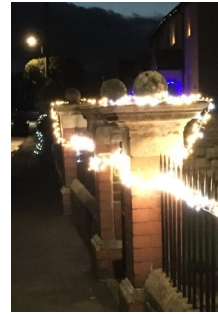
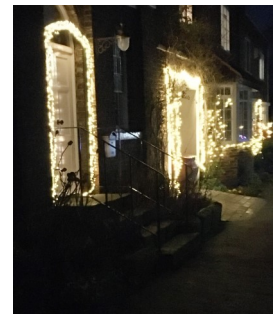
3 Jan Rowena Webster 10.15am



Thank you everyone for your contributions to the toy collection for The Salvation Army Christmas Toy Appeal and to everyone who contributes to the food bank that is collected in the village shop and taken by Angela Carlin to the collection point. This year the contributions have been amazing!



Village Christmas Lights!



Appleton Wiske – a brief look back in time by Derek Partington

Who lived in your house in 1891? A map from 1893 shows the village to be much smaller than it is at present, with most of the houses being on Front Street and Back Street (Baker Street), with a few on Hornby Road at the junction with the other streets. As well as St Mary's Church, there were three chapels, a Wesleyan Chapel and a Congregational Chapel (now Roselea) on Front Street and a Primitive Methodist Chapel (Holme View) on Back Street. So were the people more god fearing then? Well possibly but there were also two public houses, the Lord Nelson Inn and the Queen's Head Inn (now Mowbray Cottage). In 1891, the Lord Nelson was run by Thomas Simpson and his wife, Mary. They had two very young children but had a servant, Mary Coppinger, to help them. The Queen's Head was run by John Alderson and his wife, Margaret. On Front Street, Staindale House was occupied by the Foster family, Glebe House by the Russells, Wiske House by the Scotts, Townend Farm by the Bennisons, Belmont Cottage by the Camerons and Pear Tree House by the Kitchings. But the village goes back much further than 1891. Some properties have title deeds reaching back to Elizabethan times and it is known that the village was larger in earlier times, stretching to the west of the present village. Do you have any information about who lived in your house in the past? You may have title deeds which would help with any research. If so please let me know Once we have got rid on the Covid pandemic, I would like to form a Local History Society if there are enough people interested. Watch out for more results of research in the spring newsletter. In the meantime have a Happy Christmas!