



# Appleton Wiske Parish Council Summer Newsletter

## Welcome to the season of bounty, abundance, and beauty!

Moving on from the refreshing greenery of spring, we have dived deep into the warm and cloudless blue skies of summer. Our gardens have grown, swollen and blossomed full of beautiful flowers, herbs and vegetables. The countryside hosts an abundance of insects, birds, and animals, all enjoying the fruits of the hedgerows and fields, and finally we are easing out of Covid restrictions. We're allowing ourselves to look forward and to plan for family parties, dining out with friends and perhaps a well earned holiday!

We know we have to remain cautious but it is starting to feel as if brighter days are ahead. Our newsletter is at last packed full of lots of activities and events for the coming months, from Pilates to cub scouts, from tennis to walking groups, from the Hog Roast to other fundraising events. Please also check out our history pages with fascinating finds right on our doorstep! We have published our financial accounts for the last year and included articles on parking and speeding in the village which is often an area of concern with residents. If you need to contact us about any issues or concerns between meetings, please don't hesitate to contact us. We are here to listen, help and support. We have included a questionnaire on the back page for you to complete and pop into the shop, it will help us understand what is important to you and to listen to your suggestions and ideas to inform our work plan for the next year.

We must say a huge thank you to MD Mobility for sponsoring this newsletter and also Rose Acre Retreat who have placed an advert. It really is appreciated and covers our printing costs. Without your help we would not be able to publish our seasonal newsletters which are a much appreciated traditional method of communication in an increasingly digital world. If there are any other local businesses who would like to place an advert for a small fee or sponsor one of our seasonal editions, we would love to hear from you.

Finally, the pandemic brought our community together, it reminded us that our neighbours might need help, that they might be feeling isolated and vulnerable and it is only when we pull together as one community that we can really make a difference. We are better, stronger and happier when we work together, we can share ideas, skills, hobbies and conversation. Details of our Village Cleanup event is on the back page, please do get involved. There will be further details to come but for now if you could indicate how you could help and drop off your contact details at the shop, we'll be in touch very soon!!

## Have a wonderful summer everyone!



### Inside this issue

Parish Council	2
Appleton News	4
Appleton History	8
Appleton News	10
Questionnaire	13
Village Clean Up	13

### Parish Council Contact

All communication to the Parish Council should be directed to the Clerk:

01609 881822

[clerk@appletonwiske.com](mailto:clerk@appletonwiske.com)

### Dates of next Parish Council Meetings

**1st Monday of each Month, unless this falls on a Bank Holiday**

All meetings commence at 7:30pm socially distanced at the village hall unless advertised otherwise

Monday 6th September 2021  
Monday 4th October 2021  
Monday 1st November 2021  
Monday 6th December 2021  
Monday 10th January 2022  
Monday 7th February 2022  
Monday 7th March 2022  
Monday 4th April 2022  
Tuesday 3rd May 2022  
(Annual Meeting)

# PARISH COUNCIL

## Who are we?



Derek Partington  
derek@appletonwiske.com  
01609 881617



Sue McDonnell Clerk  
clerk@appletonwiske.com  
01609 881822



Ken Blackwood  
ken@appletonwiske.com  
01609 881660



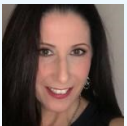
Richard Hauserman Chair  
chair@appletonwiske.com  
01609 881015



Jackie McReddie  
jackie@appletonwiske.com  
07823 333075



Richard Johnson  
richardj@appletonwiske.com  
01609 881576



Michelle Thompson BEM  
Vice-Chair  
michelle@appletonwiske.com  
07877 673030

Chris Lancaster  
chris@appletonwiske.com  
01609

## Richard Hauserman - Chair

Welcome to the summer edition of the Appleton Wiske Parish Council Newsletter. As the new Chairman of the Parish Council I would first like to express thanks, on behalf of the Parish Council, to the outgoing Chairman, Mr Derek Partington and the outgoing Vice-Chairman, Mr Ken Blackwood, for the excellent work they have done during their time in these positions, especially during the very difficult last year and more, as a result of Covid 19. I am pleased to say that both are continuing as Councillors. I would also like to welcome our new Vice Chairman, Michelle Thompson BEM, who amongst everything else, will continue to pull together the Newsletter.

Finally, with regards to Parish Council members, Neil Slade has decided to step down and, again, on behalf of the Parish Council I would like to thank Neil for all his contributions during his time on the Parish Council. We welcome our new Councillor Chris Lancaster who will tell you more about himself in the our next edition .In this edition we have several articles which I would ask everyone to think about. Most significantly we know that the Village shop lease is due to end in May 2022.

There are plans for a Village Tidy Up in September and we are also anticipating having a suitable celebration next year to mark the Queen's 70th Anniversary on the throne. There is also an update below on 20mph in the village. Also enclosed in this issue of the newsletter is a simple questionnaire asking you to let us know what you feel are the key issues to address which would improve the quality of life in Appleton Wiske.

As well as being diverse topics of relevance to the village, they also have one thing in common. For us to succeed in making progress on any of them we really need to get support and involvement from the people who live in our village, so if you want to be involved in any of these items and are prepared to help in any way please let us know. Best wishes for the summer and hopefully we will continue to see the end of the restrictions due to Covid.

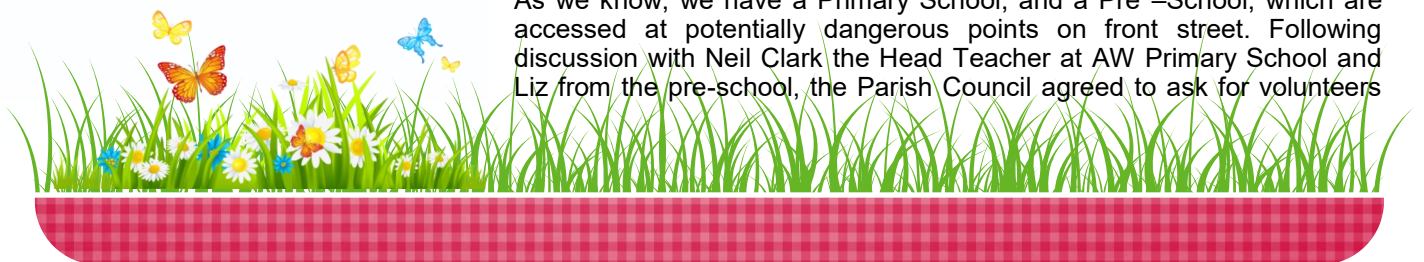
## 20's Plenty- Richard Hauserman

"Now I am sure that anyone who has read our newsletters is aware, that for several years we have raised the question of reducing the speed limit through the village to 20mph. This followed an overwhelming response to a questionnaire on this subject back in 2017.

Since then we have had numerous exchanges with NYCC Highways incl. the 95 Alive Partnership and NY Police. It is fair to say that we have had little or no success in making progress, and we have recently had a request to conduct a speed survey in the village turned down. The arguments against 20 mph are the same ones, namely, lack of evidence of accidents/injuries, cost of new signage/road calming and lack of police availability to enforce it. This is despite the report below.....

*North Yorkshire County Council Transport, Economy and Environment Overview and Scrutiny Committee 22 October 2020 - Review of North Yorkshire County Council's 20mph Speed Limit Policy...which amongst other things confirms 20mph limits in many parts of the UK and the N.E region and also the need to review implementing 20mph by schools.*

As we know, we have a Primary School, and a Pre -School, which are accessed at potentially dangerous points on front street. Following discussion with Neil Clark the Head Teacher at AW Primary School and Liz from the pre-school, the Parish Council agreed to ask for volunteers



# PARISH COUNCIL

to form a village action group to put more momentum into achieving 20mph. The PC would be happy to have a councillor join any such group, and help in any way it could and keep this as an agenda topic for the PC meetings as required. If you want to help please let us know, by contacting any of the Parish Councillors.

Finally, we don't want to have to wait until there is an accident so please drive carefully and don't speed around our roads and streets. Children could be learning to cycle or chasing a ball onto the road, a parked car door could be opening or pets could unexpectedly run into the road, it only takes a second so please take care".

## Appleton Wiske Financial Report 2020/2021

<b>Opening Balance 1<sup>st</sup> April 2020</b>	<b>£11,898</b>
Precept	£6,890
Additional Donations and Receipts	£7,190
Total Costs	£11,363
<b>Closing Balance 31<sup>st</sup> March 2021</b>	<b>£14,615</b>

### Significant payments

- £493 payment for Insurance and General Data Protection Regulation
- £562 for village planting & maintenance
- £2,502 for grass cutting - Village Green & Grassed Areas
- £120 for Village Christmas Tree
- £2,107 for Clerk's Salary, Tax & Payroll Processing
- £274 for Subscriptions (Yorkshire Local Councils Associations & The Society of Local Council Clerks)
- £783 for Website & Newsletter
- £597 for Land & Tree Maintenance
- £557 for ARA Play Area Grass Cutting & Playground Safety
- £1,547 for Village Hall Film Screen (grant from Northallerton Rotary)
- £1,182 for VAT to be reclaimed on Payments
- £100 donation to Pre-School for a new Printer
- £131 Councillor & Clerk Training

### Significant receipts

- £6,890 Precept from Hambleton District Council
- £557 donation from Appleton Wiske Recreation Association
- £1,648 VAT return (2020)
- £298 donations from Appleton in Bloom and Village Hall towards Village Planting & Maintenance.
- £1,747 Construction Industry Levy from Hambleton District Council
- £790 from Newsletter Advertising & Sponsorship

All figures rounded to nearest £1.

### Bin Collections

#### Black Refuse

Thursday 15th July  
Thursday 29th July  
Thursday 12th Aug  
Thursday 26th Aug  
Thursday 9th Sept  
Thursday 23rd Sept

#### Blue/green recycling

Wednesday 21st July  
Wednesday 4th August  
Wednesday 18th August  
Thursday 2nd Sept (day later)  
Wednesday 15th Sept  
Wednesday 29th Sept

### Village Repairs



Ken fixing the transverse decking on the footbridge crossing Staindale Beck on the path which runs alongside Hornby Road. It's now restored to a much better condition for walkers.

### Village Flower Tubs

Would you like to adopt one of the village flower tubs? We'll supply the plants in Spring and Autumn and you take care of them by watering and dead heading the flowers during the year. If you're interested, please get in touch with our Clerk Sue clerk@appletonwiske.com





# APPLETON WISKE NEWS

# Appleton Wiske Walkers

We are a group of adult walkers and are up and walking again, Our first walk of the year was a local walk to Deighton and back, a great turn out of 13 walkers with one new young member. We all took a picnic and ate that halfway then a cooling down drink at the Nelson.

We generally walk once a month on a Saturday or Sunday, usually around 5 to 7 miles. We are hoping to do a day walk once a month and an evening walk once a month with a meal at a pub afterwards. Unfortunately we do not have dogs walking with us.

The group is open to adults only  
We are a friendly bunch of  
people and looking forward to  
meeting new walkers. For details  
about our next walk please take  
a look on the notice board  
outside the shop or contact Beryl  
Baines on 07944 234682

## Happy Walking Everyone!

# YORKSHIRE COUNTRYWOMEN'S ASSOCIATION

Established over 25 years Appleton Wiske YCA is a friendly group of ladies who meet on the 2nd Wednesday in every month, at 7.30 pm in the Village Hall Annexe. We have interesting speakers and workshops covering a large range of topics. We arrange outings to places of interest, other YCA Groups and YCA functions New members and visitors are always welcome. For details of the meetings please see the Village Notice Board outside the Post Office or contact: Angela Carlin Tel 881817 Jackie Blackwood Tel 881660 We would love to see you!



Diane and Peter Swan's second book - *Tanzania Wildlife and Safari Guide* - is due to be published on 15 July, The fantastic news is that BBC Wildlife Presenter, Chris Packham, has written the Foreword to the book. Not only is this a great compliment and reflection of the quality of the book, but this will help us massively in promoting the book worldwide.

Although the book is primarily an African Wildlife and Safari Guide, there is a key focus on developing the reader's awareness of how so many species of wildlife in Africa face a threat to their very existence, and a comprehensive and thought provoking section on endangered animals draws attention to this. As with their first book, all proceeds from the sale of this book are going directly to:

**THE MESERANI PROJECT (Educating the children of Meserani, Tanzania.  
[www.meseraniproject.co.uk](http://www.meseraniproject.co.uk)**

A UK registered charity number: 113567 providing education for young people in a remote area of Tanzania. The book will be available on *Amazon* on 15 July, (£9.99 for the e-book, £19.99 for the paperback), but Appleton Wiske residents can buy paperback copies direct from Diane and Peter for £16.00 (signed if you want).

## AFRICAN AND LOCAL HANDICRAFTS & JEWELLERY SALE

Our annual fund-raising event is back on again – but bigger and better than ever – this year including a range of local handicrafts and original artworks. Please put the date in your diaries - we will be sending out full details later.

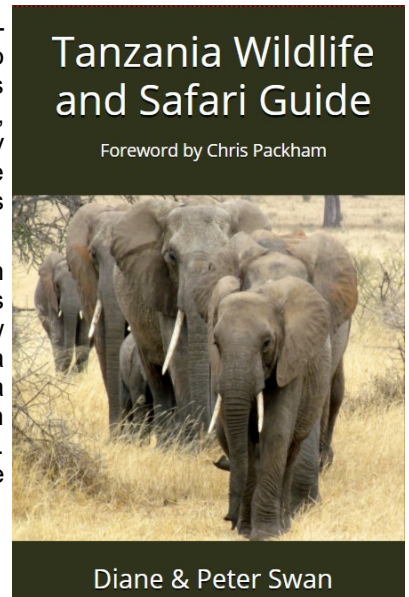
**Saturday 13 November 2021, Appleton Wiske Village Hall 10am to 4pm**

A vast range of hand-crafted jewellery, wood carvings, scarves, coaster sets, soapstone dishes, handbags, shoulder bags, shopping bags, purses, clutch bags, clothing, framed photographs, Christmas decorations, homemade fruit drinks, homemade preserves, original art works, and much more.



**APPLETON PLAYERS  
WE'RE BACK!!  
AGM 2021**

Annual AGM Meeting on 4th August at Appleton Wiske Village Hall at 7pm. Everyone welcome including non-members. Anyone who wishes to take part in our upcoming productions and is unable to attend , please feel free to contact our secretary Keith Davy on 01609 881088/07999929907 or instead email on [Keith.davy@btinternat.com](mailto:Keith.davy@btinternat.com)




★  
★ ★

Sarah Portsmouth

★ Cambridge  
★ University  
★ Boat Club  
★ athletes make  
★ up a  
★ substantial  
★ proportion of  
★ the GB under  
★ 23 rowing  
★ team, which  
★ will represent  
★ the nation in  
★ Racice in the Czech Republic, from  
★ July 7-11. Huge congratulations to  
★ Sarah who is one of those selected!

★ ★



# APPLETON WISKE NEWS

## Jobs in the Garden

1. Pinch out the side-shoots on your tomato plants, otherwise they will take off and become as big as the plant itself. You should be feeding your tomatoes every week now.
2. Give your pond a little attention. Top it up if it needs it, ideally with rainwater from a water butt, and remove blanket weed
3. Cut back the gangly foliage of your hardy geraniums now, They will put on a neat little mound of leaves, hopefully followed by a second flush of flowers



## Dog Fouling

Please can you ensure you clean up after your pet? Most of us are doing the right thing by bagging our pet's poop and taking it home. However, a small minority are letting their pooches roam free and mess on residents gardens and paths in the village. It doesn't matter if it's village green or private garden, people take pride in what's in front of their house and it's upsetting to find dog mess on the grass or amongst the flowers. Then we've got others who are doing the right thing in the countryside by bagging up their pet's mess but then tossing it over hedges and up trees! These all get caught up in farm machinery and it's someone's job to pick it off the front of combine harvester's etc. Would you like to volunteer for that job? No? Well please think about what you're doing and dispose of your pet's poop in the right way. Bag it up bin it, or take it home and bin it!

## In Season

**In the hedgerows, woods and fields:**

### Wild Herbs:

Cleavers, hairy bittercress, hedge garlic, lemon balm, wild marjoram, pineapple weed, spearmint, sweet cicely, watercress, water mint, wild thyme, wild fennel.

### Edible Wild Flowers:

Broom, borage, elderflower, chamomile, hawthorn, honeysuckle, lime, marigold, meadowsweet, nasturtium, pansy, red clover, wild rose.

### Wild Fruit and Nuts:

Wild strawberries, cherry plum, wild gooseberry, green walnuts for pickling

### From the farms:

Cherries, fresh goat's milk cheeses, ewe's curd, ricotta, lamb



## AUGUST BANK HOLIDAY

## HOG ROAST

## APPLETON WISKE

### MONDAY 30th AUGUST 2021

This year we are very happy to say that St Mary's Hog Roast will take place on the Village Green outside the Lord Nelson from 2.00 pm on Bank Holiday Monday the 30<sup>th</sup> August. The event will be governed by the regulations in place at the time, but we hope that restrictions will have been lifted by then to allow this annual event to take place. Tickets will be available from the Post Office. PLEASE BRING picnic chairs, tables, rugs etc as usual! Sign up in the Appleton Wiske shop and support this village event! If you would be interested in volunteering to help in anyway please email or call:

[sarah.hurhangee@gmail.com](mailto:sarah.hurhangee@gmail.com) mob:07772 318157

## Hedgehogs

We are very fortunate to have a good hedgehog population in Appleton Wiske. We have regular visitors in our gardens and residents took six lost babies to a Hedgehog Sanctuary last summer. However, many hedgehogs are seriously injured or killed by cutting machines in the garden. Please can you check grass and hedges thoroughly before using mowers, strimmer's, or hedge cutters. **Thank you**





# APPLETON WISKE NEWS



## The Lord Nelson Inn

### Opening Times

Monday - Friday 6.00 pm

Saturday - 6.00 pm

Sunday - 12.00 noon

Takeaway Friday and Saturday  
Dine in Sunday Lunch 12.00 noon

**Tel:** 01609 881351

### E-mail:

info@lordnelsoninn.com

### Facebook:

@LordNelsonAppletonWiske/

## CUB SCOUTS

Meet in the Village Hall every Thursday evening in Term time. Boys and Girls, aged 8 to 10. Please contact Paula Spence Tel: 881251

## BADMINTON

Men's Group met in the Village Hall every Wednesday evening from 8.30 pm to 10.00 pm. Please contact Jim Boddy Tel: 881479

## BOOK CLUB

A Reading Group meets every second Monday of the month in different homes in the village. Contact Jackie Blackwood on 881660

## GUIDES

For girls 10-15 years. Guides meet every Monday in term time in the Village Hall at 6.30-8 p.m. Please contact Sheila Stainthorpe. Tel: 882696

## ROSE ACRE RETREAT

Rose Acre Retreat is a small 4 Pod couples only Glamping site aimed to give people the chance to relax, unwind and enjoy some of North Yorkshire's beautiful scenery that we have on our doorstep.

Our family run site will offer 4 bespoke Glamping pods which come with underfloor heating, kitchen, fridge/freezer, double bed, W/C and shower.

We aim to support local businesses within the village and surrounding areas including The Village Shop, The Rustic Bakery, The Lord Nelson, Hutchinson Hobbs, Roots Farm Shop, The Duke of Wellington and The Black Bull.

We are looking forward to welcoming customers to our site and hope this will help promote the village and all its local businesses for many years to come.

Kind regards, Michael & Natalie Hare 07921 020431

## St Mary's Newly Restored Sundial



Walking along the path from the Lych-gate towards the entrance to St Mary's Church the existence of an ancient sundial isn't a feature that is prominent and readily noticed. The tendency for people not to look upwards as they walk along is likely to be the reason. The age of the sundial is unknown. It's significant that the Roman figures for the number 4 is IIII and not the current convention of IV.



The circular mark against this number IIII suggests that this is a "Tide Dial" also known as a "Mass Dial". In his note on this, Robert Atkinson, the village's clock expert, notes that such sundials were common between the 7<sup>th</sup> and 14<sup>th</sup> centuries. The original gnomon (the projecting piece that shows the time of day by the position of its shadow) has been worn away over time. Mr. Place has kindly crafted and installed a replacement gnomon which he has fixed into position.

**LINAS CHARITY** There is a quilting group working for this charity that meets in different homes. Please contact Jackie Blackwood, Tel: 881660



# APPLETON WISKE NEWS

## 200<sup>th</sup> Anniversary of our community's Methodist Chapel!

Appleton Wiske Village Hall - 4<sup>th</sup> July

The Methodist church runs as a society. Members are able to shape how we evolve as church, in responding to the needs of community. Our local chapel opened in 1821 and was beautifully refurbished in 1994. As membership has been around 14 for the last few decades, it is abundantly clear that we receive a lot of assistance from very many friends and supporters within our local community!

Thank you to all who have contributed to community by attending, organising or supporting Coffee mornings, Toddlers support, Sunday services, Art & Craft, Genealogy, Carol singing, Pancake evening, Baptisms, Weddings, Thanksgiving services, Flower festivals, Pop-up choirs, Fellowship groups, Quiet days, Computer literacy, Sunday school, Chat evenings, French lessons, Youth groups, After-School club, Mindfulness, Decluttering, Harvest festivals and many other community events.

We currently understand our purpose as being to help ourselves and others to Live the Love and Love the Life - more completely, consistently and creatively – by providing a supportive environment for exploring, experiencing and embodying the Love that is God.

With your support, we look forward to many more years of serving our community with love and care, as did those who went before us.

Karen Portsmouth (serving as lead steward) 07890 478533



## Appleton Wiske Village Shop and Post Office

Who would think that it is almost a year since the village shop underwent that massive transformation to turn it into the shop you see today? Saturday morning, July 2020, 12 noon and an army of people turned up with boxes and bags to collect everything inside the shop and put it under a gazebo on the gravel outside and it took just 15 minutes. Next, a fab couple of joiners from Kirby Moorside turned up and put all the shelves in, the new counter and made it look just great and by six o'clock everything was back in looking grand. Prior to all of this a group of us cleaned and painted the whole place in two days, I was very lucky to have fabulous helpers for the whole time. As you can probably tell I am extremely proud of the shop that I have turned it into with help and support and of course all the customers from the village and surrounding villages, the cyclists and passers-by, from the children who come in for their favourite sweets to the shoppers who fill their bags. I have the best bakers, cake makers and suppliers too. This is just a reminder of all your hard work and support that you have given and I hope that you continue to do so. I know all the shops are open now and the supermarkets give you everything you need but spare a thought for your wonderful village shop and keep coming in, we need you and without your continuing support we won't be here.

**Contact Jackie:** 07823 333075 **Facebook.** @VillageShopAppletonWiske

**Opening Times:** Mon, Wed, Thur, Fri: 06:00 - 13:00 14:00 - 18:00

**Tuesday:** 06:00 - 13:00 **Saturday:** 06:00 - 14:00 **Sunday:** 09:00 - 13:00

## PILATES

Sessions are held in the Village Hall every Tuesday evening from 7.45 pm to 8.45 pm at £ 5.00 per session. Please contact Ann McEvoy Tel: 01325 337367

## TENNIS

Adults £20

Children £5

Household Membership £45

All are welcome to join in men, women and mixed club nights as well as just popping down when you feel like a knock about. If you are interested in becoming a member and would like more information please contact [tennis@appletonwiske.com](mailto:tennis@appletonwiske.com)

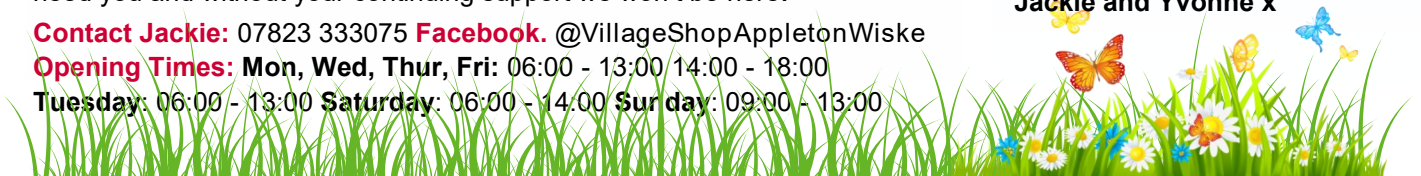
## VILLAGE OIL BUYING GROUP

Community wide Oil Buying scheme that achieves significant price reductions through the bulk purchase opportunity. For further details please contact: Ken Blackwood on 881660

## Village Shop Statement

*"As most of you will be aware by now the Village Shop and Post Office is looking to find a new home to relocate to in Appleton Wiske. We know how important this facility is to our community and those of the surrounding villages. We are asking for your help and support over the next few months to find a new site and building to move to. If you have any ideas or suggestions, we look forward to hearing from you. Thank you all for your on-going support."*

Jackie and Yvonne x





# APPLETON WISKE HISTORY

## How old is Appleton Wiske?

by Derek Partington

Extensive archaeological work in Deighton over recent years has revealed Anglo-Saxon, Roman and even Bronze Age finds (this will be the subject of a talk at the Appleton Wiske Yorkshire Countrywomen's Association on 11 August) but how far back does Appleton Wiske go?

Appleton Wiske is near a Roman Road. The Roman road was commonly known as Cade's Road after the 18<sup>th</sup> century antiquarian John Cade who first identified the route. It branches from Ermine Street at Stamford Bridge and travels north via Thirsk until it arrives to the south of Appleton Wiske as Long Lane near Deighton. It then travels north up Cheesecake Hill and after crossing the Tees heads via Sedgefield to the Tyne at South Shields. In the 1850's some children playing in the main village street found a black clay amulet with a white zigzag pattern and Saxon burial urns were found when the Churchyard was enlarged at the end of the 19<sup>th</sup> Century but do we have any other evidence of early occupation?

The field to the west of St Mary's churchyard has some interesting features. A 1m depth ground penetrating radar image (left) shows evidence of a feature running north to south to the eastern side (about the middle of the photo and alongside the ridge and furrow). This appears to be a Holloway, a path or road between houses and is seen better from ground level as shown on the right.



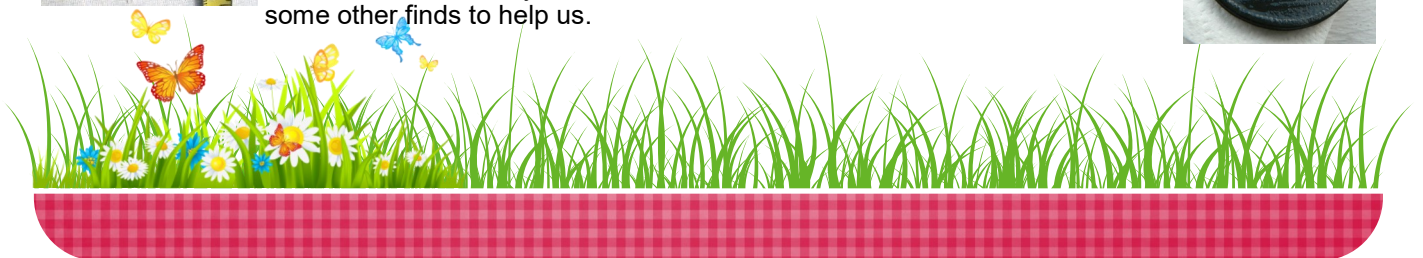
Recent finds have also given us some clues. Firstly a 24" keystone to a house (left photo) was unearthed when a grave was being dug in St Marys in 2019. Then some small pieces of pottery were found in a garden on Baker Street. These have been identified as Cistercian Ware (16<sup>th</sup> century) and early medieval pottery (13<sup>th</sup> century or earlier) – (right photos) Detectorists scanned the field in late 2020 and early 2021 and found many metal artefacts including buttons, coins, a lead figurine about 10cm tall and a curb chain.



Of the coins found several are from the time of George III including a "Cartwheel Penny" on the right. This was the first coin to be minted using a steam press in 1797. It is thought that the other standard penny shown is probably from a few years later.



The Royal Arms of George III are displayed in the church and a 17th century painted board records a lady churchwarden, Mrs George Rokeby, so we know that the village goes back to about 1800, but has anything been found from before then? In St Mary's there is some fine Church plate, notably the 1673 chalice made by Marmaduke Best of York and the detectorists have some other finds to help us.





# APPLETON WISKE HISTORY

Of most interest are an Elizabethan silver sixpence dated 1565. The coin is 20mm in diameter and "Regina Elizabeth" can be clearly seen on the obverse and the date, 1565, on the reverse side.



But the earliest find to date is a Roman coin bearing the name Allectus who was governor of Britannia from AD 293-296. As the coin is copper alloy it is not in good condition, but has been verified and measures 23mm in diameter.

**What more may be revealed? Should there be an Appleton Dig similar to the Deighton Dig mentioned at the start of this article?** (Please note that you require the landowner's permission before carrying out any surveys.) Contact Derek for more info [derek@appletonwiske.co.uk](mailto:derek@appletonwiske.co.uk)



## The Queen's Platinum Jubilee Weekend 2022

In 2022, Her Majesty The Queen will become the first British Monarch to celebrate a Platinum Jubilee, seventy years of service, having acceded to the throne on 6th February 1952 when Her Majesty was 25 years old. There will be year-long Platinum Jubilee celebrations throughout the United Kingdom, the Commonwealth and around the world as communities and people come together to celebrate The Queen's historic reign.

Throughout the year, Her Majesty and members of the Royal Family will travel around the country to undertake a variety of engagements to mark this historic occasion culminating with the focal point of the Platinum Jubilee Weekend in June 2022.

An extended bank holiday, from **Thursday 2nd to Sunday 5th June**, will provide an opportunity for communities and people throughout the United Kingdom to come together to celebrate the historic milestone. Across the four days the celebrations will include public events and community activities, as well as national moments of reflections on The Queen's 70 years of service.

### Thursday 2nd June:

- **The Queen's Birthday Parade (Trooping the Colour)** - traditional Parade to mark The Queen's official birthday,
- **Platinum Jubilee Beacons** - the lighting of beacons across the UK

### Friday 3rd June:

- **Service of Thanksgiving** - thanksgiving at St Paul's Cathedral for The Queen's reign

### Saturday 4th June:

- **The Derby at Epsom Downs** - The Queen, will attend the Derby accompanied by the Royal Family,
- **Platinum Party at the Palace** - special live concert from Buckingham Palace with the world's biggest entertainment stars

### Sunday 5th June:

- **The Big Jubilee Lunch** - bringing the Jubilee celebrations into the heart of every community to share friendship, food and fun with neighbours - can be big or small - street party or picnic, tea and cake or a garden barbeque.
- **The Platinum Jubilee Pageant** - A pageant featuring over 5,000 people from across the UK against the backdrop of Buckingham Palace



# APPLETON WISKE NEWS

## Decluttering making space for things that matter most



Facilitated by Karen Portsmouth drawing on the work of Marie Kondo *The Life Changing Magic of Tidying*, Joshua Becker *Becoming Minimalist* Kim John Payne *Simplicity Parenting*, Jeff Levin *Life Alignment* and Stephen Covey *First things First*

### Appleton Wiske Methodist Church Thur 2 - 3 pm

- **8 July** Decluttering - a compassionate response to cumulative stress
- **15 July** Decluttering - a generous gift of forgiveness
- **22 July** Decluttering - a deliberate act of appreciation
- **29 July** Decluttering - intentional promotion of things we most value

**August** provides an opportunity for practical decluttering, experimenting with the ideas of the course and for observation of personal choices. For those interested in continuing this as a journey of transformation, the following additional sessions are on offer:

- **9 Sept** Change Process – clutter vs compass
- **16 Sept** Boundaries - place and purpose
- **23 Sept** intentional Future – presence and legacy
- **30 Sept** Creative Process – live the life you love & love the life you live

Donations gratefully received to help fund the work of the chapel in our community. Bookings/enquiries please contact  **Karen directly on 07890 478533** 

## Appleton Wiske Pre-school

Appleton Wiske Preschool have spaces from September for children aged 2 and over. We are open daily from 8.30am until 3.30pm.

We would like to thank everyone that has joined our Bingo Lotto fundraiser. This is £10 to join and the game takes approximately 3 months for someone to win. The current winning prize is £1000 as we have 200 people playing. The way it works is you choose 6 numbers between 1 and 59 and every Wednesday and Saturday when the national lottery is drawn we take the bonus ball number to mark off the numbers.

If anyone wishes to join please drop your £10 and 6 numbers off at Preschool in the village hall or with Jackie or Yvonne in the village shop and once a new game starts you will be included. The more people playing the higher the prize.

Once again we would like to thank all the villagers for supporting our fundraisers during this awful time and wish you all the very best of health and to stay safe. Thanks.

**Liz Huckle, Preschool Manager**

## Appleton Wiske Parent and Carer Toddler Playgroup Fridays 10am to 12pm (term-time only)

A friendly and welcoming parent and toddler group, giving carers, babies and toddlers the chance to socialise in a relaxed, small group.

We offer a range of activities, children can play with lots of toys; sit & ride-on, slides, rockers, jigsaws, books, soft toys, role play, dressing up, baby toys, story time, singing, bubbles and much more.

Tea, coffee, juice and biscuits or fruit is available and included in the cost of £2 per family per session.

Please just come along on the day!  
**Contact: Helen Smith or Rebecca Heald**



## Appleton Wiske Community Primary School

Hello from everybody at Appleton Wiske School! Although we are not back to 'normal' just yet (whatever that means any more) it has been absolutely fantastic having all our pupils in school for the last few months. Each class bubble has enjoyed a wide range of activities inside and outside the classroom with plenty to look forward to before the end of term.

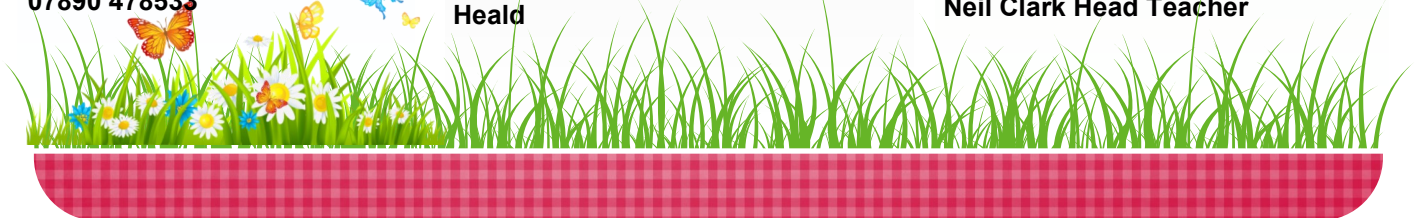
We have supported charities such as Comic Relief and Young Minds, and held whole school events such as celebration assemblies, World Book Day, the Easter Egg competition and even maypole dancing! We have been enjoying getting to know our new Reception starters with weekly transition visits in the outdoor area and can't wait to welcome them into our school community in September.

Our Reception and Year 1 children have been taking part in forest school sessions which offer valuable experiences in an enriching environment, and our Year 5/6 pupils are looking forward to their upcoming residential at Robinwood in Cumbria.

We are also hopeful that our Sports Day can go ahead as planned and we are working on a Year 5/6 production which promises to be a real treat for our parents. We will end the term with our Awards Ceremony and Leavers' Assembly, so it is full steam ahead as we enter the final stretch of the school year!

I would like to take this opportunity to thank my amazing staff and all our parents, carers and other family members who have supported the school this year under such challenging circumstances.

**Have a great summer.  
Neil Clark Head Teacher**





# APPLETON WISKE NEWS



## THE 'ONLY' MOBILITY SHOP IN NORTHALLERTON



**SCOOTERS**  
NEW & USED



**WHEELCHAIRS**  
MANUAL & POWERED



**LIFT CHAIRS**  
DOMESTIC / BARIATRIC



**STAIR LIFTS**  
STRAIGHT & CURVED



Call **01609 776484** or visit **mdmobility.co.uk**

10 GARTHWAY ARCADE • NORTHALLERTON • DL7 8NS



Dear Resident,

It has been brought to the attention of North Yorkshire Police that many vehicles are parked and causing an unnecessary obstruction in the village of Appleton Wiske, specifically on Front Street and the junction of Front Street and Baker Street.

Please consider the following questions when parking your vehicle:

- Am I parked illegally?
- Am I restricting access to someone's home?
- Am I parked on a pavement?
- Am I restricting access for emergency service vehicles?
- Am I parked in such a position that my vehicle is obscuring the view of other road users or pedestrians?
- Am I obstructing normal traffic flow?
- Am I parked within 10 metres of a junction or opposite a junction?

- Am I parked on a bend?

**If your answer is yes to any of the above, please park somewhere else.**

We are mindful that parking is limited in the village however we request you are considerate of where and how you park your vehicle and the implications this could have on other road users and pedestrians.

The parking will be monitored in the village and any vehicles left in a dangerous position or causing an unnecessary obstruction may be issued with a traffic offence report.

### Section 137 Highways Act 1980

If a person, without lawful authority or excuse, in any way wilfully obstructs the free passage along a highway he/she is guilty of an offence  
(This includes roads, carriageways, bridleway, footways, and pavements)

Kind Regards **Kim Laws PCSO 6786** Northallerton  
Neighbourhood Policing Team

Summer Newsletter kindly sponsored by a MDMobility

# Appleton Wiske Parish Council Questionnaire Summer 2021

Appleton Wiske is a beautiful village with a thriving community and is surrounded by picturesque countryside hosting an abundance of wildlife. The Parish Council act on your behalf caring for and maintaining the facilities that are essential to our community and which are valued by our residents. The aspects of our Community that we support and value include:

- ⇒ our built Infrastructure (including housing, roads, utilities & services);
- ⇒ our social structures (including: the school, pre-school, church, chapel, recreational facilities, village hall);
- ⇒ our natural environment (rural character, landscape, access to footpaths – both rights of way and unofficial but frequently walked paths, bridleways);
- ⇒ our social structures (especially community self-help initiatives);
- ⇒ our cultural achievements (societies, clubs).

**As a resident what three things do you value most in our village?**

- 1.
- 2.
- 3.

**As a resident what three things do you think the Parish Council should be concentrating on during the next year?**

- 1.
- 2.
- 3.

Appleton Wiske Parish Council

Saturday 4th September 2021 10am

National



NationalCleanUpDay.org



September 2021 is an International Clean Up Month and the Parish Council want to organise an event that really brings our community together. So whether it's having a good tidy up around the outside of your home or around the village, we would like to invite all our residents to take part in what we hope will be a really fun family day! We've got a list of jobs and we know we've got a village full of helpers, gardeners, cleaners, builders, painters, entertainers, businesses and much more. Would you like to volunteer for some of the jobs listed? You won't be on your own, and you can get the kids involved too! We're setting up a group to oversee the event so we can plan refreshments, entertainment, equipment, competitions and any other fabulous ideas you have to make this a really enjoyable day! Just tick what you're interested in, it can be more than one, include your contact details below and we'll be in touch!

Name: .....

Tel/email: .....

Village Signs - weeding, cleaning	
General litter pick around the village	
Litter pick along the roadsides	
Paint the bridge over the Wiske	
Repair the "gods cake" (triangle of grass at the Welbury/Deighton junction)	
Kerbside weeding	
Village Green repairs – mainly gardening	
Event Planning Group	