



Appleton Wiske Parish Council Autumn Newsletter

**‘The season of mists, mellow fruitfulness,
mortality and conkers’**

(John Keats ode To Autumn)

The autumn harvest is associated with abundance, prosperity and wealth and with the approach of winter and cooler weather, animals are busy storing food and creating warm hibernation spaces. In this season we enjoy country walks underneath the dazzling array of Autumn leaves, and at dusk retreat indoors in front of the fire with cosy mugs of hot chocolate. It is a time of reflection and gratitude, reconnecting with ourselves and those important to us.

At only 24 years of age John Keats wrote his ode To Autumn over 200 years ago when the start of the season was cooler, and the poet was near the end of his short life. Literature buffs say this is what gives the poem its special sense of mortality and melancholy as well as beauty.

The village recently gathered together and supported Richard Smith and family and friends as we celebrated and gave love and thanks for the life of Leonie who we lost far too soon. She epitomised the very meaning of community spirit with her enthusiasm, can do attitude and helpful nature, supporting and developing many successful projects in the village.

Supporting and gathering the community together is something we continually strive to achieve especially after the last 18 months of living through a pandemic. We hope you find this newsletter full to the brim of activities and events which you can enjoy during the coming months as well as information about how you can get involved with community projects such as 20's plenty and the Appleton Wombles. We are also planning for the Queens' Platinum Jubilee celebrations next year—more details to come in our winter newsletter.

We've published a summary of the results of our questionnaire from our summer newsletter on page 4 and this will be discussed in more detail at our November meeting. You will see that one of the top words used was "shop". We know this is a very valued commodity and we are looking at ways in which we can support the future sustainability of the shop and post office, perhaps as a community venture.

Finally, thank you to MD Mobility for once again sponsoring our newsletter and also Rabbitts Handyman for placing an advert which helps with our printing costs. It's very much appreciated.

Very best wishes from all Parish Councillors.

Inside this issue

Welcome.....	1
Parish council	2
Appleton News.....	6
Garden/Countryside...	7
Appleton News	8
Kids Corner.....	10
Local Businesses.....	12

Parish Council Contact

All communication to the Parish Council should be directed to the Clerk:

01609 881822

clerk@appletonwiske.com

Dates of next Parish Council Meetings

**1st Monday of each Month,
unless this falls on a
Bank Holiday**

All meetings commence at 7:30pm socially distanced at the village hall unless advertised otherwise

Monday 1st November 2021

Monday 6th December 2021

Monday 10th January 2022

Monday 7th February 2022

Monday 7th March 2022

Monday 4th April 2022

Tuesday 3rd May 2022
(Annual Meeting)



PARISH COUNCIL

Who are we?



Derek Partington
chair@appletonwiske.com
01609 881617



Sue McDonnell Clerk
clerk@appletonwiske.com
01609 881822



Ken Blackwood
ken@appletonwiske.com
01609 881660



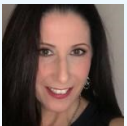
Richard Hauserman Chair
richard@appletonwiske.com
01609 881015



Jackie McReddie
jackie@appletonwiske.com
07823 333075



Richard Johnson
richardj@appletonwiske.com
01609 881576



Michelle Thompson BEM
michelle@appletonwiske.com
01609 881729



Chris Lancaster
chris@appletonwiske.com
07572 617395

LEONIE SMITH

Derek Partington – past Chair

"As you may be aware Leonie died on 25 September. She was only 46 and had lived with cancer for many years, most of the time when she was Parish Clerk having joined the Parish Council in February 2009. Despite her illness and the onerous treatment she was receiving, she never missed a meeting, always kept on top of all correspondence, supported the Councillors throughout her time with us and was always cheerful and upbeat. She felt that she had to tender her resignation in 2018 due to the progression of her illness and she stayed with us until a new clerk could be appointed in June of that year. She will be sadly missed by the Council and everyone in the parish who knew her."



An excerpt from the Address by Reverend Simon Golding

"It was no accident that Leonie worked in Human Resources for those two words stand as an epitaph to her for all that we can remember. Her humanity and her resourcefulness. For she was : Open, Fearless, Firm and Fair with a true sense of justice in both her professional and personal life and all who knew her and worked with her can vouch for that. In nearly 20 years in the village, she was an active member of the community contributing in so many ways as Parish Clerk and Secretary of the ARA in particular. Leonie was a giver, she gave of her time and gifts for the benefit of us all and the community of which she was a prominent member. None of us can have failed to have been inspired by her courage and example and by her determination and commitment to the things that she believed in years ago. Each one of us will recall times, occasions and experiences that we shared with Leonie and Richard - good times, sad times, happy times, funny times. Leonie expressed her faith in the way in which she led her life. In the words of William Barclay:

"Faith without Love is cold, and Hope without Love is grim, for Love is the fire that kindles Faith and it is the light which turns Hope into Certainty"

LEONIE farewell, and in the words I used earlier today at a time when things seem so dark, words found at the end of the Second World War scratched on the walls of a cell that had been occupied by a Jewish prisoner:

***I believe in the sun even when it is not shining
I believe in love even when I cannot feel it
I believe in God even when he seems silent.***

LEONIE, it is in that confidence that we say our goodbyes to you today: May you rest in peace and rise in glory."

Amen



PARISH COUNCIL

20's Plenty- Richard Hauserman

Following the article in the Summer Newsletter, a small working group of 3 people has been formed to progress action on achieving 20mph in the village. Recently we have sent a request to all North Yorks Councils for any information they have about implementing 20mph and asked if they would be prepared to share any experience they have on this.



In addition we are now going to apply to join the national "20's Plenty" campaign and be part of the North Yorkshire branch of 20's Plenty. You will have noticed that 20's plenty stickers have appeared in the village at certain locations in an attempt to raise awareness amongst drivers.

If you would like a sticker, that can be placed in a suitable location, which reinforces the message within the village, please contact any PC member as we still have some left. These stickers were originally intended to be placed on waste bins visible from the road, but can be used elsewhere.

Finally, we would still like to hear from anyone who wants to help and would be interested in joining the group. The more help we have the easier it will be to move forward. So again please contact a PC member if you can spare any time.

New Parish Councillor - Chris Lancaster



My family and I have lived on Hornby Road in Appleton Wiske since 2006; I work from home as the puzzles and crossword editor for the Telegraph newspaper, and my wife, Emma, works as an insurance underwriter.

Our three children all attended school in the village and at Northallerton College; our youngest has just left for university, leaving me with some spare time to try and bring what I can to the Parish Council.

Even if you haven't seen Emma and I round the village, you will probably have seen one of our five cats, Arthur, Geoffrey, Martin, Douglas and Dave. Each time one of our cats dies on the street, it gets replaced with two more; I am hoping for success in our campaign to lower the speed limit in the village, otherwise we may well run out of room for new cats in our house within a few years.

PLANNED ROAD CLOSURE NOTIFICATION

Hornby Road, Appleton Wiske

The Closure will be in place for a period of 5 days between 13th December 2021 and 17th December 2021 to allow for Northern Power Grid new connection works (09:30-15:30 only)

Bin Collections

Black Refuse

Thursday 4th Nov
Thursday 18th Nov
Thursday 2nd Dec
Thursday 16th Dec
Thursday 30th Dec
Thursday 13th Jan
Thursday 27th Jan

Blue/green recycling

Wednesday 10th Nov
Wednesday 24th Nov (last green bin garden collection)
Wednesday 8th Dec
Wednesday 22nd Dec
Wednesday 5th Jan
Wednesday 19th Jan (Green bin Christmas tree collection)

Flu Jabs



In mid-September, the Parish Council arranged for pharmacists from Day Lewis Pharmacy in Northallerton to provide influenza vaccinations in Appleton Wiske Village Hall for local residents. The appointment system made sure that close contact was kept to a minimum with 122 individuals from Appleton and surrounding villages receiving the vaccine. To receive regular information about events and activities in and around the village, please email diary@appletonwiske.org



PARISH COUNCIL

Unitary Authority Update

***Hambleton District
Councillor Steve Watson:***

The next key stage for the Unitary authority roll out is the agreement of the new ward boundaries expected in mid November.

This then moves on to parliamentary approval and formal agreement of a Unitary authority. May 2022 will see the election of the new unitary representatives who will act as North Yorkshire County Council (NYCC) councillors for the first year. They will automatically move to become unitary representatives in 2023 when Hambleton District Council will cease to exist.

The new authority will set up and run a shadow structure for 2022 - 2023 to ensure continuity going forward. It is currently expected that all parish council elections will take place in May 2022 to align them with the new authority going forward. However this is not yet confirmed but if it does go ahead the cost would be born centrally.

Unitary representation is expected to be between 89 and 92 seats in total and as such sees a drop of over 70% representation with associated savings across the new area. This will however create a significant and challenging workload for the newly elected representatives. District representation will continue till April 2023 by myself as the current district councillor.

Results of the Summer Questionnaire

The Parish Council act on your behalf caring for and maintaining the facilities that are essential to our community and which are valued by our residents. During the summer we asked your views on what you value in our village and what you think we should be concentrating on during the next year. Thank you to everyone who took the time to respond, we will be discussing the results at our November Parish Council meeting but in the mean time, the following were the most popular answers:

1. As a resident what three things do you value most in our village?



2. As a resident what three things do you think the Parish Council should be concentrating on during the next year?

- improved footpaths and roads through the village
- apply for conservation status and encourage residents to take pride in their neighbourhoods appearance
- continue to ask for feedback from residents
- restricting development - no more houses
- 20's plenty initiative
- village shop retention
- speed of cars & cyclists including shouting at each other
- parking issues including one way system & police notices on cars
- Importance of supporting infrastructure that enables social networking ie. shop, pub, village hall, chapel, church, school, minibus, sports field, nursery, supporting groups
- village environment: roads, paths, trees, seating, sports facilities
- natural environment - keeping pathways open/walks
- community support - getting info out to everyone
- community events
- making life easier for residents
- planning for the Queen's Jubilee next year including mugs
- Establish the semi-permanent "pop up" library in the bus shelter



PARISH COUNCIL

APPLETON WISKE VILLAGE CLEAN UP

4th September 2021

We had a fantastic response from villagers volunteering their time for our village clean up. The weather was kind to us as we spent a couple of hours fun, litter picking, weeding and cleaning. It was really lovely to see so many people litter picking and cleaning up around the village.

Thank you to everyone for volunteering your time! It was so appreciated and really brought our community together for a catch up and well earned refreshments from Appleton Wiske Village Shop and cakes kindly baked by volunteers!

See you all next year!



Appleton Wombles

During the winter months we will be gathering a list of seasonal activities such as tidying up the village, seasonal gardening and repairs, and special one off jobs such as painting the bridge.

You can be as involved as much or as little as you like depending on what time you have to spare and what you enjoy doing!

We also intend to launch a Wombles hit squad who could tidy up the gardens of those who are too ill or who can no longer do it themselves. Just looking out at a tidy garden can work wonders for someone's health and wellbeing.

We already have a group of willing wombles so if you would like to join them, please get in touch with Michelle on 07877 673030 or email michelle@appletonwiske.com. Michelle will be in touch over the coming months to arrange our first Appleton Wombles meeting to discuss our planned activities for the coming year!



APPLETON WISKE NEWS

Appleton Wiske Walkers

We are a group of adult walkers and we generally walk once a month on a Saturday or Sunday, usually around 5 to 7 miles. We are hoping to do a day walk once a month and an evening walk once a month with a meal at a pub afterwards. Unfortunately we do not have dogs walking with us.

The group is open to adults only. We are a friendly bunch of people and looking forward to meeting new walkers. For details about our next walk please take a look on the notice board outside the shop or contact Beryl Baines on 07944 234682.

Happy Walking Everyone!

YORKSHIRE COUNTRYWOMEN'S ASSOCIATION

Established over 25 years Appleton Wiske YCA is a friendly group of ladies who meet on the 2nd Wednesday in every month, at 7.30 pm in the Village Hall Annexe.

We have interesting speakers and workshops covering a large range of topics. We arrange outings to places of interest, other YCA Groups and YCA functions. New members and visitors are always welcome.

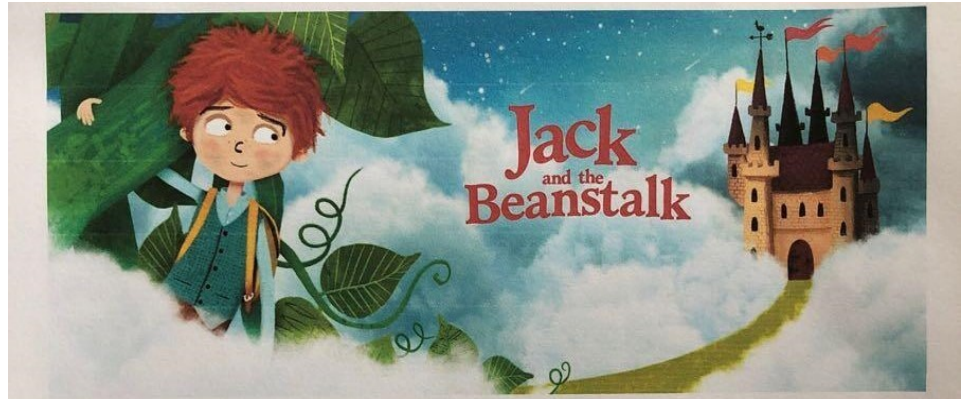
For details of the meetings please see the Village Notice Board outside the Post Office or contact: Angela Carlin Tel 881817 Jackie Blackwood Tel 881660. We would love to see you!



APPLETON WISKE PLAYERS

ANNUAL PANTOMIME

JANUARY 13TH, 14TH & 15TH 2022



THE MESERANI PROJECT

AFRICAN & LOCAL HANDICRAFTS & JEWELLERY SALE

Saturday 13 November 2021.

Appleton Wiske Village Hall. 10.00 a.m. to 4.00 p.m

The Meserani Project is a U.K. registered charity that supports the education of young people in a remote area of Tanzania. Peter and Diane Swan are once again holding their biggest annual event in Appleton Wiske, with the sale of items that they have bought directly from markets in Tanzania, Kenya, Rwanda, Namibia and Zambia.

A vast range of hand-crafted jewellery, wood carvings, soapstone animals, scarves, coaster sets, soapstone dishes, handbags, shoulder bags, shopping bags, purses, clutch bags, Christmas decorations, and much more.

Plus: original art works, homemade fruit drinks, homemade preserves, Christmas decorations and wood carvings, from artisans in North Yorkshire.

The Meserani Project prides itself in that there are no expenses taken out of any fundraising or donations – so 100% of the takings from the Handicrafts & Jewellery Sale go directly to the young people in Tanzania who are being given a lifeline in terms of being able to access an education. Registered charity number: 1135670.

www.meseraniproject.co.uk



GARDEN AND COUNTRYSIDE

Jobs in the Garden

- Collect fallen leaves and put them into their own separate compost bin (or tip them all into a plastic bin bag poked with holes) Water them, and leave them for at least a year to rot down into beautiful leaf mould.
- Plant fruit bushes and trees. You can buy them as bare root trees now and they will establish very well over winter.
- Buy 'pot feet' for your terracotta containers to lift them away from the ground and allow them to drain well through winter rains and frosts.
- Keep bird feeders topped up and provide fresh water in a bird bath. Check on frozen mornings that there is plenty of thawed water. Throw out chopped-up apples for the fieldfares and redwings.
- Cut stems of berried evergreens for Christmas decoration at the start of the month and store them in vases of water in a shed, porch or sheltered corner of the garden.
- Prune grapevines while they are dormant. Their sap starts to flow early in the new year

In Season

In the hedgerows, woods and fields:

Wild Greens: Chickweed, hairy bittercress, dandelion leaves, sow thistle, wintercress, sorrel.

Fungi: Chanterelles, field mushrooms, horse mushrooms, puffballs.

Wild Fruit and Nuts:

Crab apple, juniper berries, rose hips, rowan berries, sloes, sweet chestnuts, walnuts, wild damson.

Roots: Dandelion, horseradish, Jerusalem artichoke, lovage, wild garlic.

Game: Grouse, hare, pheasant, rabbit, venison, mallard, partridge.

From the kitchen garden:

Vegetables:

Jerusalem artichokes, cabbages, cardoon, carrots, celeriac, celery, chard, chicory, endive, kale, leeks, lettuce, onions, spring onions, shallots, parsnips, potatoes, pumpkins, winter squash, salsify, spinach, swede, turnips.

Fruits: Quinces, medlars, pears.

Herbs:

Chervil, parsley, coriander, sage, rosemary, bay

Calling all cyclists, runners, hikers, horse riders and villagers!

What would you do if you were all alone in the great outdoors in an emergency with very little signal?

To find you more easily many UK Emergency Services including North Yorkshire are encouraging you to share your 3 word address.

What is what3words?

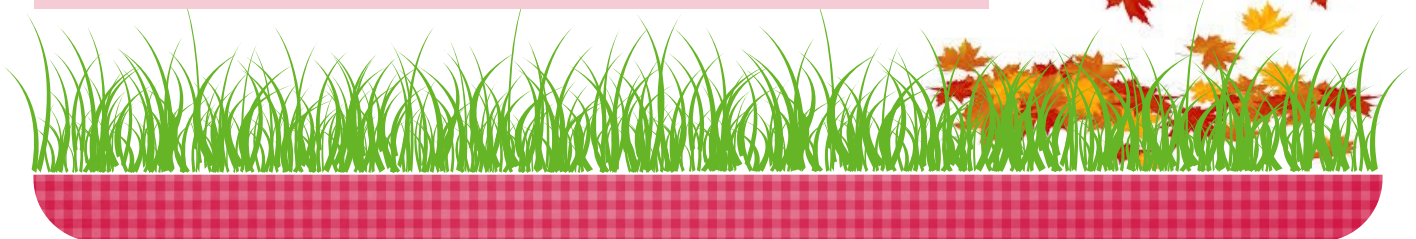
what3words has divided the globe into 3m squares and given each one a unique 3 word address. It means everywhere can be located with just three words. The words are randomly assigned to each square and will always stay the same

How do I get what3words?

It is available as a free app via your phone's Apple or Google app store and online at www.what3words.com

How do I use what3words in an emergency?

1. Find the 3 word address for your current location on your phone app. It works offline—ideal for rural areas.
2. Share your 3 word address over the phone to the call handler.
3. The emergency service can then coordinate a response directly to the exact location where help is needed.



APPLETON WISKE NEWS

CUB SCOUTS

Meet in the Village Hall every Thursday evening in Term time. Boys and Girls, aged 8 to 10. Please contact Paula Spence

BADMINTON

Men's Group met in the Village Hall every Wednesday evening from 8.30 pm to 10.00 pm. Please contact Jim Boddy Tel: 881479

BOOK CLUB

A Reading Group meets every second Monday of the month in different homes in the village. Contact Jackie Blackwood on 881660

GUIDES

For girls 10-15 years. Guides meet every Monday in term time in the Village Hall at 6.30-8 p.m. Please contact Sheila Stainthorpe. Tel: 882696

LINAS CHARITY

There is a quilting group working for this charity that meets in different homes. Please contact Jackie Blackwood, Tel: 881660

PILATES

Sessions are held in the Village Hall every Tuesday evening from 7.45 pm to 8.45 pm at £ 5.00 per session. Please contact Ann McEvoy Tel: 01325 337367

VILLAGE OIL BUYING GROUP

Community wide Oil Buying scheme that achieves significant price reductions through the bulk purchase opportunity. For further details please contact: Ken Blackwood on 881660

Appleton Wiske Village Shop and Post Office

As most of you now know the shop needs to find a new place to move to, and hopefully we have found a new place! It's early days and a lot of work has to be done to secure planning with the much appreciated support from Henry Hewitson.



I am now relying on lots of community support to keep our shop and post office. It's a big ask but with fundraising, grant applications and lots of hard work I'm confident that we can really make this a community venture not just for the village but surrounding villages who rely on us too. If you can help with offers of support, professional advice or good old community spirit, please do get in touch, it will be so appreciated

Thank you to everyone who had offered their help so far, I cannot do this on my own and it is going to take the whole community to get us new premises for our Post Office and shop.

Please don't forget to use the shop as much as possible to keep it going and keep this community asset open

Thank you

Contact Jackie: 07823 333075 **Facebook.** @VillageShopAppletonWiske

Opening Times: Mon, Wed, Thur, Fri: 06:00 - 13:00 14:00 - 18:00

Tuesday: 06:00 - 13:00 **Saturday:** 06:00 - 14:00 **Sunday:** 09:00 - 13:00

REMEMBRANCE-TIDE 2021

Sunday 14th November

10:45am

After the success of our Outdoor Service for Remembrance Sunday last year we plan to repeat the event this year with the option of going into Church if the weather is inclement. You are invited to meet by the Lychgate at 10.45am. Cubs and Guides will also be in attendance this year. Thanks to Jackie, Poppies will be on sale in the Village Shop - please give your support to this most worthy cause. The garden of Remembrance will be available as usual for people to lay their personal crosses and we plan to relay the Ceremony and the 2 minutes silence from Whitehall at the Lychgate.



APPLETON WISKE NEWS

FRIENDS OF ST. MARY'S

Do you enjoy gardening; wildlife and nature; history, art or archaeology? Are you fond of our historic village church and churchyard?

- Perhaps your daily dog walk passes through it,
- Perhaps you like sitting on William's bench, enjoying the peaceful view,
- Perhaps you have beloved family members and friends buried or interred in the churchyard.

Whatever your reasons for using this area of the village, it is a living space. But like many ancient churches, St Mary's has a continual need for regular repairs and restoration, so a small group of us joined together in 2016 to help the Church Committee preserve this twelfth century building as a symbol of the local community, past and present.

Our village church is part of our community heritage, and we are always looking for new members and attenders, new ideas and fresh thoughts on how we can build on the success we have had to date. We need new people prepared to take on committee roles; to provide communications through various media; and keep us providing enjoyable social community based events. These events act as fundraisers but are not their primary role. If you are interested in finding out more, please contact a committee member, Sarah Hurhangee, Janice Blake or Sue McDonnell, or email sarah.hurhangee@gmail.com

SPICED APPLE PANCAKES

Make your pancake topping first:

4 x large apples, peeled, cored and finely chopped

Half a cup of light brown sugar

Half tsp of cinnamon

2 x tsp butter



Melt the butter in a pan and add the apples first then when soft add your sugar and cinnamon. Cook stirring occasionally until the mixture is soft and jammy. About 10 to 15 minutes. Stand mixture to one side whilst you make your pancakes.

Pancakes – Plain flour, eggs, milk all whisked together and add a little of your apple mix.

Cook and stack in the oven to keep warm until you have enough for everyone then pile onto a plate and spoon over the spicy apple mix you made earlier. Sprinkle a little cinnamon over the top and serve possibly snuggled up in front of a roaring fire.

Jackie McReddie

GENEALOGY GROUP

The Genealogy Group have reconvened post-Covid and meet in the Methodist Chapel at 1pm every Thursday. If you are interested in finding out what secrets your family tree may contain please come along – there is no charge. Michael Booth, who is a genealogist will be there to assist those who need help and there are facilities to connect to the internet to do some research whilst you are there.

AUTUMN PLANTING OF VILLAGE TUBS

Within the next few weeks the Parish Council need to prepare the tubs for Winter/Spring flowering. We will empty the tubs of old plants and refresh the compost. We will dispose of the old plants but if anyone wishes to keep the geraniums please let me know at clerk@appletonwiske.com and we will leave them for you. We will supply the daffodil bulbs and pansies, leaving them next to the tubs for planting. Please water the pansies for the first few days after planting if it doesn't rain. If anyone is unable to do the planting please let us know on the above e-mail. Any movement of tubs can be done in the Spring if requested.



KIDS CORNER

APPLETON WISKE PRE-SCHOOL

Bonfire Night
Saturday 6th November.
Bonfire lit at 6pm
Fireworks at 6.45pm

Free entry
Donations welcome.

On sale on the night
hot dogs, soup, tea, coffee,
hot chocolate & mulled
wine.

Bags2school
16th November before 9am
at pre-school

Fill a black bag or a
Bags2school bag with
unwanted clothes, bags,
belts, soft toys, bedding and
curtains. Unfortunately no
quilts or pillows

Preschool receive
money for the weight we
collect.

Have a sort out and help
preschool raise some
money.

Christmas Fayre
Friday 26th November 7pm
at the village hall.

Craft stalls, festive music,
tea, coffee, mulled wine and
mince pies.

£1 entry fee.

All proceeds to Appleton
Wiske preschool.



APPLETON WISKE COMMUNITY PRIMARY SCHOOL



Hello from everybody at Appleton Wiske Community Primary School! It has been a busy half term with lots of learning opportunities inside and outside the classroom. Our pupils have returned with fabulous attitudes and exemplary behaviour. A special mention must go to our new Reception pupils who have settled in well to their new routines; they are an absolute pleasure to have in school. Although we still have a number of restrictions and safety procedures in place, it has been great to see the children mixing again at lunchtimes and playtimes. This aspect of school life is crucial for the development of children's social skills, self-esteem and wellbeing.

So far this term, we have taken part in sporting events such as the Year 5/6 football tournament, the Year 3/4 dodgeball competition and the Year 1/2 fun run. The children were a credit to our school and displayed outstanding team spirit and sportsmanship. We have also continued with our forest school activities for Reception and Year 1 pupils which provide valuable learning opportunities in an outdoor setting. Our music provision is a priority too and I am delighted with the number of children learning musical instruments in school, including the piano, keyboard, guitar, ukulele and drums.

On Friday 15th October, we held our whole school Harvest Festival. The children enjoyed singing songs and performing routines, and we reflected on the importance of harvest whilst considering those who are less fortunate than others. Our families made lots of generous donations towards Hambleton Foodshare which is fantastic and much appreciated. Many thanks for all of your support in the community.

Neil Clark Head Teacher

APPLETON WISKE PARENT AND CARER TODDLER PLAYGROUP

Fridays 10am to 12pm (term-time only)

A friendly and welcoming parent and toddler group, giving carers, babies and toddlers the chance to socialise in a relaxed, small group.

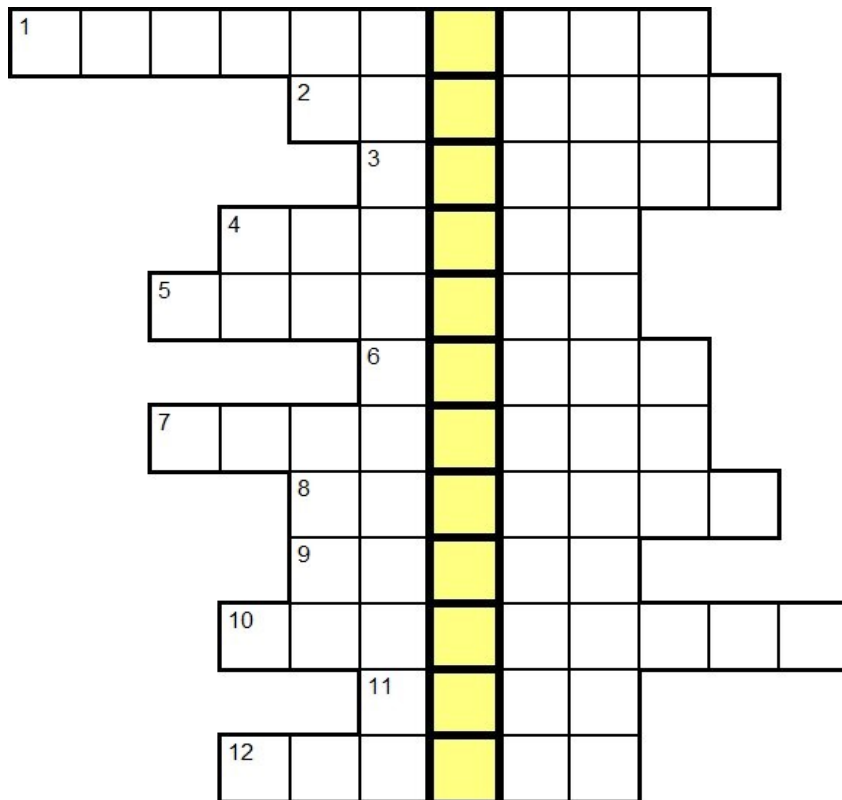
We offer a range of activities, children can play with lots of toys; sit & ride-on, slides, rockers, jigsaws, books, soft toys, role play, dressing up, baby toys, story time, singing, bubbles and much more. Tea, coffee, juice and biscuits or fruit is available and included in the cost of £2 per family per session.

Please just come along on the day! **Contact: Helen Smith or Rebecca Heald**



KIDS CORNER

Autumn Puzzle



Solve the clues, and write the answers in the grid to reveal a phrase used at this time of year.

- 1 Witch's means of transport (10)
- 2 Bringing in the crops (7)
- 3 Autumnal Hindu or Sikh festival (6)
- 4 Items put back by an hour each autumn (6)
- 5 Orange vegetable associated with Hallowe'en (7)
- 6 Item worn to mark Remembrance Day (5)
- 7 Bushy-tailed animal that hides nuts for the winter (8)
- 8 Second month of autumn (7)
- 9 ___ chestnut; tree from which conkers fall (5)
- 10 Bangers, squibs, roman candles, sparklers ... (9)
- 11 Another name for autumn (4)
- 12 Season that follows autumn (6)

Children and Young People's Mental Health and Wellbeing Support

KOOTH offer free, anonymous, online counselling and wellbeing support for young people aged between 11-18 across North Yorkshire and York.

Visit www.kooth.com

BUZZ US is a text messaging service for young people aged 11-18 experiencing mental health and wellbeing difficulties.

Visit

www.compass-uk.org/buzz-us or call 07520 631168.

THE GO-TO is the home of wellbeing and mental health for young people in North Yorkshire visit www.thegoto.org.uk/coronavirus-information

YOUNG MINDS is a free 24/7 support service. If you need urgent help, **text YM to 85258**. There is also a Parents Helpline: **0808 802 5544**

(Mon to Fri 9.30am – 4pm, or visit

www.youngminds.org.uk



LOCAL BUSINESSES



MD Mobility™
Helping your independence

THE 'ONLY' MOBILITY SHOP IN NORTHALLERTON



SCOOTERS
NEW & USED

WHEELCHAIRS
MANUAL & POWERED

LIFT CHAIRS
DOMESTIC / BARIATRIC

STAIR LIFTS
STRAIGHT & CURVED

Call **01609 776484** or visit **mdmobility.co.uk**

10 GARTHWAY ARCADE • NORTHALLERTON • DL7 8NS



The Lord Nelson Inn



Our take away menu is available Friday and Saturday 6pm to 8pm . If you wish to order some food, please call in your order on 01609 881351, we'll call you back when it's ready to be collected or you can pop in for a drink before picking up your food. We are now serving dine in Sunday Lunches from 12pm to 2:30pm. Booking advisable as we'll have limited availability.

Tel: 01609 881351

E-mail: info@lordnelsoninn.com

Facebook: [@LordNelsonAppletonWiske/](https://www.facebook.com/LordNelsonAppletonWiske/)

Twitter: [@Nellie_Appleton](https://twitter.com/Nellie_Appleton)

Instagram: [thelordnelsoninn](https://www.instagram.com/thelordnelsoninn)

Handyman, Landscaping & Maintenance

Yarm and surrounding areas

Please contact Neil for more information
and a quote

RABBITS HANDYMAN

Kirklevington 01642 784081/07388 634804

