



Appleton Wiske Parish Council Spring Newsletter

"I wandered lonely as a cloud, That floats on high o'er vales and hills, When all at once I saw a crowd, A host, of golden daffodils"

William Wordsworth (1804)

At last the sun is starting to shine, the days are getting longer and we can finally start planning events and summer holidays! This season's newsletter is packed full of a whole host of activities which will hopefully appeal to everyone's interests and hobbies.

Last year we carried out a survey which gave us a snapshot of what topics you think the Parish Council should be concentrating on during this coming year. You said apply for conservation status and take care of our natural environment, we listened and on page 7 you will find details of our plans for a Parish Wildlife Map.

You asked for community support in getting information out to everyone, we hope our seasonal newsletter helps to do that as we know that not all of you use the internet or email. You said we need to plan for the Queen's Jubilee and have more community events, we listened, just take a look at pages 4 and 5, we hope you'll be pleased!

You asked us to encourage residents to take more pride in our village environment including roads, paths, trees, village green and seating. We listened and we've set up the Appleton Wombles and various clean up's during the year, find out more on page 6.

You asked for us to continue to ask for feedback from residents, please do use our monthly meetings to share your views. You are most welcome and if you can't make it then please get in touch with our Clerk or one of our Parish Councillors - all contact details are on page 2.

We do hope you will all embrace our plans for the Queen's Platinum Jubilee weekend. We have a small planning group of volunteers who have been instrumental in getting plans off the ground and we cannot thank them enough. Now we have our itinerary in place, we are asking for all different types of help and support which we hope will attract many of you to contribute to a fantastic royal celebration!

Also, have you or your family/friends lived in the village a long time? We are looking for memorabilia such as photos, pictures, memories and letters of times gone by for our Appleton Wiske "Through the Ages" display in the Chapel during the Jubilee weekend. We can interview you to capture your memories and we can take photos of memorabilia to keep your originals safe. Please do get in touch we'd love to hear from you!

Happy Easter everyone!

Inside this issue

| | |
|-----------------------|----|
| Welcome..... | 1 |
| Parish council news. | 2 |
| Jubilee Weekend | 4 |
| Spring Clean Up..... | 6 |
| Garden/Countryside... | 7 |
| Appleton News | 8 |
| Kids Corner..... | 11 |
| Local History | 12 |

Parish Council Contact

All communication to the Parish Council should be directed to the Clerk:

01609 881822

clerk@appletonwiske.com

Dates of next Parish Council Meetings

1st Monday of each Month, unless this falls on a Bank Holiday

All meetings commence at 7:30pm in the village hall unless advertised otherwise

Monday 4th April 2022

Monday 16th May 2022
(Annual Meeting)

Monday 6th June 2022

Monday 4th July 2022

No meeting in August

Monday 5th September 2022



PARISH COUNCIL

Who are we?



Derek Partington
derek@appletonwiske.com
01609 881617



Sue McDonnell
Clerk
clerk@appletonwiske.com
01609 881822



Ken Blackwood
ken@appletonwiske.com
01609 881660



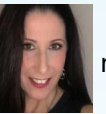
Richard Hauserman
Chair
chair@appletonwiske.com
01609 881015



Jackie McReddie
jackie@appletonwiske.com
07823 333075



Richard Johnson
richardj@appletonwiske.com
01609 881576



Michelle Thompson B.E.M.
Vice Chair
michelle@appletonwiske.com
07877 673030

**North Yorkshire County
Council and Parish Elections**
Thursday 5 May 2022
www.hambleton.gov.uk/elections



MESSAGE FROM THE PARISH COUNCIL CHAIR

"Just to remind everyone that the Annual Parish Meeting is scheduled to take place in the Village Hall on Monday 16th May. This is your meeting and the opportunity to raise any points of local concern and/or update on local activities. In addition, I will give a brief update on key actions undertaken by the Parish Council in the past year.

Our current Clerk, Sue McDonnell has confirmed that she is stepping down from her role, but will stay in post as we progress the appointment of her replacement, in order to achieve as smooth a handover as possible.

The Parish Council would like to take the opportunity to thank Sue for all her work on behalf of the Council and send our best wishes for her future plans."

Richard Hauserman

WHAT HAPPENED TO BILSDALE MAST?

Councillor David Hugill, North Hambleton NYCC Division Osmotherley and Swainby HDC Ward

The original mast was more than 300 metres tall and sat on the North York Moors. It served around 670,000 households in urban and rural areas across North Yorkshire, the Tees Valley and County Durham. Weighing around 500 tonnes, it was one of the tallest structures in the UK.

On 10 August 2021, a fire was reported. The fire service arrived within 45 minutes and managed to get the fire under control within a day, although it took five days to clear the site and make it safe. Unfortunately, the mast suffered serious damage, causing a loss of signal to much of the North East and North Yorkshire. The cause of the incident is still being investigated, but the fire service ruled out arson.

I visited the site recently as a member of the North York Moors National Park who are the planning authority. On reaching the top of the moor on a road so steep it has had red anti slip paint on its bend to aid traction I was amazed at the activity up there. Three masts were visible including a recently commissioned lattice mast standing around 80m tall. This together with a change to the booster station in the Northallerton area may have caused loss of picture in Appleton Wiske.

Arqiva the mast operator have the following instructions on website to retune your TV:

- Press menu on your box or TV remote control
- Select set up, installation, update, or a similar option. If you're asked for a password, the default code is 1234 or 0000.
- Select first-time installation (sometimes called factory reset, full retune or default settings).
- Press OK if your equipment asks if it's OK to delete existing channels, then your retune should start automatically.

PARISH COUNCIL

- If prompted, save the channels that are found

Planning permission has now been granted to construct a 300m permanent mast. Given the fragile habitat of the moorland site a large amount of preparatory work must take place before construction can begin. This involves moving heather plants to a site elsewhere then replanting once construction is complete.

Hopefully in the coming months we will have a new, more up to date mast and all our TV problems will be in the past.

ONE SINGLE COUNCIL TO REPLACE THE CURRENT TWO TIER SYSTEM

Hambleton District Councillor Steve Watson:

Elections have been scheduled for May 5th following the news that North Yorkshire is to receive a new unitary authority which will replace North Yorkshire County Council and Hambleton District Council. Ninety new unitary councillors will cover eighty nine wards after the election in May and will shadow existing representatives for the first year and then Hambleton District will cease to exist from April 2023. The Smeaton's ward will combine with the Morton on Swale ward to become Morton and Smeaton's ward. This will have one single councillor going forward to represent you on the new unitary authority. I will be stepping down from the new ward and would just like to thank the Parish Council and residents for their support over the last twelve years. My colleague David Hugill is also moving on and I would like to extend my thanks to him as well. A Councillor for the west of the ward is hoping to be successful at the election and become your representative going forward.

HAMBLETON LOCAL PLAN ADOPTED FEBRUARY 2022

The Local Plan sets out a strategy for development that details how much land should be provided to accommodate new homes and jobs that are needed within Hambleton up to 2036 and where this will be located. It addresses the need for new homes and jobs alongside the need for associated infrastructure, such as shops, community facilities, transport, open space, sport and recreation, health and education. The Plan will set out protection and enhancement of the countryside, the historic environment and the unique character of our market towns and villages. The Plan also sets out the policy framework which will be used to determine proposals for development across the district and for enforcement purposes. The overall objective is to promote sustainable development.

The following documents are now available on the Council's website:

- Adoption statement
- Sustainability Appraisal Adoption Statement
- The Hambleton Local Plan
- Policies Map

<https://www.hambleton.gov.uk/local-plan-1>

Printed copies are available to view at : Northallerton Library 1 Thirsk Road Northallerton DL6 1PT Telephone for opening times: 01609 533832

BIN COLLECTIONS

Black Refuse

Thursday 7th April

Friday 22nd April

Friday 6th May

Thursday 19th May

Wednesday 1st June

Blue/green recycling

Wednesday 13th April

Wednesday 27th April

Wednesday 11th May

Wednesday 25th May

Thursday 9th June

DOG FOULING

Anyone that chooses not to clean up after their dog can be given a fixed penalty notice or taken to court and fined up to £1000 and risk a criminal record.

There are no excuses. Not clearing up after your dog is anti-social and illegal.

Be a responsible dog owner – bag it and bin it.

Contacting the council

To report dog fouling offences or lost and found dogs or for further information you can contact the Council in the following ways:

Online:

[Hambleton.gov.uk/
reportingform](https://www.hambleton.gov.uk/reportingform)

Phone: 01609 779977

Email:

info@hambleton.gov.uk

Write: Civic Centre, Stone Cross, Northallerton DL6 2UU



PARISH COUNCIL

Village Minibus

For those in the village with mobility problems who would like to take part in the celebrations, we can organise for the minibus to collect you and take you home. Please get in touch with Jackie at the Village Shop.

Platinum Pudding Competition

Your recipe submission should be sweet and opens for registrations on 1st May. All puddings will be judged before the street party on Saturday 4th June. Further details in the shop and on noticeboard very soon!

Make your own crown for the street party!

A template with instructions can be emailed to you, please contact Michelle or there will be printouts available in the shop in the next couple of weeks.

Calling all bakers!

We need your help! Could you support the weekend by baking cakes, scones, quiches or anything else that you love to bake? We need them for refreshments on each day as well as for the Afternoon Tea Dance. Your help would be so appreciated!

Do you like to meet & greet?

We need volunteers over the weekend to help with serving refreshments, showing people where to sit, greeting people interested in the memorabilia displays, generally being the person who knows what's going on! We would love to hear from you!



THE QUEEN'S PLATINUM JUBILEE WEEKEND

Take a look at the fantastic weekend of celebrations planned for the whole village! Get into the spirit of things by decorating your houses in red white and blue before joining in with all the following exciting activities. There's something for everyone! We'll be in touch with exact timings as soon as we get them!

Thursday 2nd June

The Queen's Birthday Parade (Trooping the Colour)

Everyone invited to watch the live broadcast of the morning parade on the big screen in the village hall with refreshments.

Appleton Wiske Memories

All weekend there will be photos and memorabilia of days gone by in Appleton Wiske displayed in the Methodist Chapel.

River of Hope

The River of Hope forms a central part of The Queen's Platinum Jubilee celebrations. The Queen has always shown a great love and respect for the natural environment and our school children will be creating imaginative pieces of artwork, utilising either natural or recycled materials, whilst thinking about their hopes and aspirations for the next 70 years. Their artwork will be displayed in the village hall all weekend.

Beacon Lighting

Across the UK beacons are being lit at 9.45pm. All our welcome to see our beacon lit at the playing field in the evening by our special guest the Deputy Lord Lieutenant Mr David Kerfoot. He will be greeted by the Cub Scouts and Guides. Refreshments will be available including music to mark such a momentous occasion and a Village Commonwealth choir will sing the 'Song for the Commonwealth' - 'A Life Lived with Grace'.

Friday 3rd June

Service of Thanksgiving

Bringing our community together, this will be broadcast live in the morning in the village hall with refreshments.

Family Sports Day

A good old family sports afternoon with our favourite egg and spoon race, bean bag race, three legged race and much more. Lots of fun and laughter for all the family in the recreation field with refreshments and treats for all!

Evening Jubilee Quiz

After a full day of activities settle down for a right royal quiz about all things Royal! You never know her Majesty might make an appearance!

PARISH COUNCIL

Saturday 4th June

Street Party

The UK has a long history of organised street parties to celebrate national events. We're organising a party right up your Front Street! Festooned with decorations this is a street party you won't forget! It's a chance to share friendship, food and fun!

Bring your own picnic, table and chairs (there will a number of tables and chairs provided) and enjoy an afternoon of music, homemade crowns, roving reporters, pudding competition, treasure trail of crowns, children's activities and a huge street party photo! A good old fashioned knees up!

Sunday 5th June

Hymns and Pimms

Enjoy an 11am service of hymns at St Mary's Church followed by a celebratory glass of Pimms! What a lovely way to spend your morning!

1950's Tea Dance

Enjoy a quintessentially English afternoon tea in the village hall whilst enjoying vintage music and singing from yesteryear. 1950's style clothing optional. Dancing, singing, chatting and having fun a must! Tickets £5 each, under 4's go free. Includes a delicious selection of sandwiches, scones, cakes and tea, coffee or juice. Extra £3 for prosecco. What a perfect way to end such a monumental weekend of Royal celebrations!

Jubilee Commemorative Bone China Cups

If you haven't had chance to order your cups for children, grandchildren, nieces, nephews, friends and grandparents we've extended the deadline for ordering your cups to **Friday 8th April 2022**. At only £6 each they're a great way to remember your weekend celebrations in Appleton Wiske! Please place your order asap by phoning: Simon Golding, Tel: 01609 881185 or The Village Shop Tel: 01690 881480



Contacts

If you have any questions or suggestions about the weekend, or you would like to volunteer your time with any of the requests for help please contact Michelle Thompson on 07877 673030, michelle@appletonwiske.com or pop round with a note to Lupton House, Front Street. Alternatively, please pass on a message to Jackie at the village shop. Many thanks in advance for your support it really is very much appreciated.

Roving Reporters!

We're looking for adults and young people with an interest in photography & journalism to help capture the fun over the weekend! From taking photos to interviewing and chatting to people or just generally catching the fun and laughter of our community, any help you can give would be great!

Memorabilia

Have you an interest in history? We need volunteers to help with our display of 'Through the Ages' It could be information and research you already possess or you could help collate information from the villagers. Either way, any help you can give would be appreciated.

Do you like sport?

We'd love your help on sports day! We're looking for a small team to organise the races, set out the kit, blow the whistle!! Any help you can give will be gratefully received!

Singers and Musicians

We would love to hear from anyone who would like to be part of the choir for the Commonwealth song on Thurs 2nd June evening and again on Sunday 5th June at the afternoon tea dance. We would also like to hear from any musicians who can help with entertainment over the weekend or for the bugle/cornet call when lighting the Beacon.



PARISH COUNCIL NEWS

Appleton Wombles

Appleton Wombles is a project that was started last year after being inspired by the Wombles of Hambleton who are a litter-picking group based in and around Northallerton.

We carry out seasonal activities such as tidying up the village, small gardening and repairs jobs and special one off jobs such as painting the bridge.

You can be as involved as much or as little as you like depending on what time you have to spare and what you enjoy doing!

Check out the following dates:

- **SPRING CLEAN UP**
Sat 7th May 10am
- **QUEENS PLATINUM JUBILEE WEEKEND**
2nd June to 5th June
- **WORLD CLEAN UP DAY**
Sat 17th Sept 10am

Homemade cakes and refreshments are always plentiful!

If you'd like to be a Womble then please contact Michelle on 07877 673030 or email michelle@appletonwiske.com



APPLETON WISKE GREAT SPRING CLEAN UP

Saturday 7th May 2022 10am



One Bag – Big Difference: Appleton Wiske Parish Council supports residents pledging to pick one bag of litter for charity's Great British Spring Clean campaign!

We are encouraging families, neighbours, friends, and of course the Appleton Wombles to join forces and pledge to pick a bag of litter from in and around the village in order to protect our vibrant community and precious wildlife habitats. There will also be a bit of seasonal gardening and small repairs around the village, but you can be as involved in as much or as little as you like.

The actual national campaign is between 25th March and 10th April 2022. However, we want to plant our village tubs with red, white and blue flowers ready for the Queen's Platinum Jubilee celebrations in June, so we've pushed ours back a few weeks to hopefully frost free days!

If you'd like to take part on the 7th May for a couple of hours, please get in touch with **Michelle** on **07877 673030** or email michelle@appletonwiske.com, so we know how many to expect. Litter grabbers and bin bags provided, plus homemade cakes and refreshments!

Want to take part but can't make the 7th May? Not a problem, just collect a bag of litter and take a photo and send it in! With your permission we could also show our appreciation by highlighting your efforts on the Appleton Wiske Facebook page!

GARDEN AND COUNTRYSIDE

Jobs in the Garden

1. Plant out an asparagus bed. Prepare and enrich the soil well before you do as you will be harvesting from it for many years to come.
2. Feed your plants. Find a balanced organic fertiliser and water it around flowering plants in particular - roses, perennials and fruit bushes - to encourage greater flowering and fruiting this year.
3. Spread compost or well-rotted manure over your beds, to hold in winter moisture and set the plants up for the growing season ahead.
4. Mow your lawn and trim around the edges to tidy it up. If your edges have got very messy you can sharpen them up with a half moon lawn edger, cutting along a string line.
5. Plant out sweet pea seedlings at the base of the wigwam of poles tied together with string, and with twine spiralled around and tied to the canes at 1m intervals.
6. Plant your potatoes into the bottom of a trench then mound soil over them. You will need to be ready to mound them up further as growth appears in order to encourage the most potatoes to form.

In Season

In the hedgerows, woods and fields:

Wild Greens: Alexanders, bistort, burdock, chickweed, comfrey leaves, dandelion, fat hen, hawthorn tips, nettle tips, rampion, tansy, sorrel, watercress

Edible Wild Flowers:

Primulas, cowslips, violets, gorse, broom

Roots: Wild garlic

From the kitchen garden:

Vegetables: Asparagus, purple sprouting broccoli, cauliflower, chard, endive, lettuce, spring onions, radishes, spinach, turnips, cabbages, spring greens, rhubarb

Herbs:

Sorrel, chervil, parsley, coriander

From the farms:

Fresh ewe's milk cheeses, Jersey Royal potatoes, asparagus

HOG ALERT:

Hedgehogs are just waking up from their hibernation so please be careful if you are clearing leaves or debris in your garden and extra careful if you are strimming.

PARISH WILDLIFE MAP

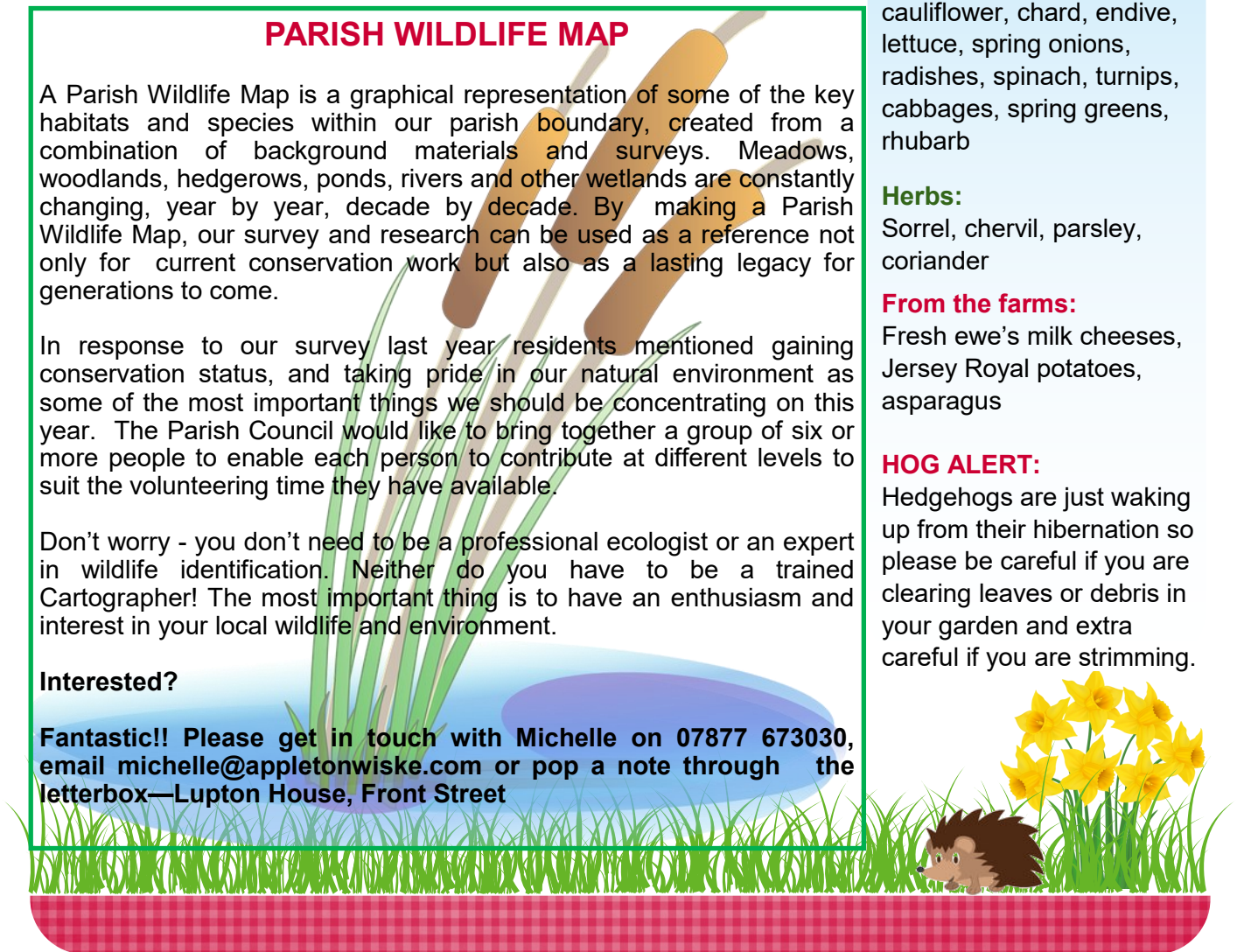
A Parish Wildlife Map is a graphical representation of some of the key habitats and species within our parish boundary, created from a combination of background materials and surveys. Meadows, woodlands, hedgerows, ponds, rivers and other wetlands are constantly changing, year by year, decade by decade. By making a Parish Wildlife Map, our survey and research can be used as a reference not only for current conservation work but also as a lasting legacy for generations to come.

In response to our survey last year residents mentioned gaining conservation status, and taking pride in our natural environment as some of the most important things we should be concentrating on this year. The Parish Council would like to bring together a group of six or more people to enable each person to contribute at different levels to suit the volunteering time they have available.

Don't worry - you don't need to be a professional ecologist or an expert in wildlife identification. Neither do you have to be a trained Cartographer! The most important thing is to have an enthusiasm and interest in your local wildlife and environment.

Interested?

Fantastic!! Please get in touch with Michelle on 07877 673030, email michelle@appletonwiske.com or pop a note through the letterbox—Lupton House, Front Street



APPLETON WISKE NEWS

CUB SCOUTS

Meet in the Village Hall every Thursday evening in Term time. Boys and Girls, aged 8 to 10. Please contact Paula Spence 07931569575.

BADMINTON

Men's Group met in the Village Hall every Wednesday evening from 8.30 pm to 10.00 pm. Please contact Jim Boddy Tel: 881479

GUIDES

For girls 10-15 years. Guides meet every Monday in term time in the Village Hall at 6.30 - 8pm Please contact Sheila Stainthorpe. Tel: 882696

LINAS CHARITY

There is a quilting group working for this charity that meets in different homes. Please contact Jackie Blackwood, Tel: 881660

PILATES

Sessions are held in the Village Hall every Tuesday evening from 7.45 pm to 8.45 pm at £ 5.00 per session. Please contact Ann McEvoy Tel: 01325 337367

VILLAGE OIL BUYING GROUP

Community wide Oil Buying scheme that achieves significant price reductions through the bulk purchase opportunity. For further details please contact: Ken Blackwood on 881660

Appleton Wiske Village Shop and Post Office

As probably most, people know we are moving premises this year but we aren't going too far, just next door into the old garage thanks to Tony Marsay who is all set to build a lovely new shop. Keep your eyes peeled for the work to begin.

This move is going to be quite expensive as the Post Office has lots of security attached to it which has to be done by their own specialists. Fundraising has already begun and



lots of you came to the **Valentines Dance** which was a positive success, good music, good company and some excellent dancing. Thank you to everyone who have helped setting up especially Linda Breckon for all those gorgeous puds at the dance and all the helpers behind the scenes whom I won't name because I am bound to miss someone out and be in big trouble. **The Quiz Night In** went down very well too as did the pies and peas for supper, and a lot of fun was had by all! Thanks to everyone who took part. The winners were Anne and Malcolm Wilkinson, who were presented with a lovely bottle of champagne for all their efforts.

To date, a huge £1557.00 has been raised for the Post Office and Shop relocation fund. **A big thank you to all!** More activities are in the pipe line and I hope you will want to join in and enjoy them:

Saturday 2nd April, Cake Sale

Please help with this event by making cakes to sell, we will be outside the shop from 8.30 am so if you want to buy a cake please be early .

Saturday 17th June, Ceilidh

Fab fun event this one, The Cod Beck Ceilidh Band will have us dancing in the village hall (more details to follow)

Saturday and Sunday 16th and 17th July, Open Gardens

We will be inviting you all to have a stroll around some gardens in the village which are going to be open for the weekend. There will be tea, coffee and cakes served in the village hall on both days (more details to follow) If you would like to offer your garden to be open in this event or if you are able to help with the teas please contact **Linda Breckon on 07809197934.**

More events planned so keep looking in the village shop for more info. Thanks Jackie!

Contact: 07823 333075 **Facebook.** @VillageShopAppletonWiske

Opening Times: Mon, Wed, Thur, Fri: 06:00 - 13:00 14:00 - 18:00
Tues: 06:00 - 13:00 **Saturday:** 06:00 - 14:00 **Sunday:** 09:00 - 13:00



APPLETON WISKE NEWS

Appleton Wiske Village Hall

Treasurer and Secretary

Our treasurer for the last 21 years, Brian Rawling, has announced that he is to retire at our upcoming AGM in April; our Secretary, Phil Whyman, has agreed to take over the role. Consequently the Village Hall committee is looking for someone to volunteer to be our new secretary.

This is one of the many unsung behind the scenes jobs in the village: just a few hours of work each year helps to keep the Village Hall open for everyone. As secretary, you'll deal with a minimal amount of correspondence, attend 4 - 5 committee meetings a year and prepare and circulate the minutes. Phil will be around to help his successor and make the handover as straight forward as possible.

We'd all like to take this opportunity to thank Brian for his help as treasurer over the past 21 years.

If you are interested in applying for the secretary's position, have any questions or would like any further information, please email philwhyman@hotmail.com.

Hall Lighting and Heating

For a while now we have been thinking about changing all the lights in the village to LED versions. Some of the existing lights have been in place for a long time and by changing to LED we will reduce the electricity use and help to reduce our carbon footprint. The heating needs setting up on the programmer weekly – the times depending on when the hall is used.

This is a lengthy procedure and we thought that by installing 'smart' thermostats we could set the heating from anywhere on a mobile phone. This would save oil and help provide a more comfortable environment in the hall. The total cost for this work will be £6500. We have been fortunate in receiving grants of £4000 from The Jack Brunton Trust and The Two Ridings Foundation. The work is now nearing completion.

Tote Draw

We will shortly begin collecting subscriptions for the 2022 draws. Last year we raised the annual subscription from £12 to £15 per year, and changed to making the draw quarterly instead of monthly.

As a result we were able to pay out just over £1,000 in prize money, with a first prize of £200 in the Christmas draw. If you would like to become a member please contact **Brian Rawling: 01609 881628** or brianrawling@gmail.com Existing members will be contacted by their collector.

AGM

The Village Hall AGM will be held on **Thursday 21 April at 7.30pm** in the Village Hall. Everyone is welcome to attend and express their views on the use and development of the hall.

The Lord Nelson Inn



Our take away menu is available Friday and Saturday 6pm to 8pm. If you wish to order some food, please call in your order on **01609 881351**, we'll call you back when it's ready to be collected or you can pop in for a drink before picking up your food. We are now serving dine in Sunday Lunches from 12pm to 2:30pm. Booking advisable as we'll have limited availability.

Tel: 01609 881351

E-mail:

info@lordnelsoninn.com

Facebook:

@LordNelsonAppletonWiske

Twitter: @Nellie_Appleton

Instagram: thelordnelsoninn

GENEALOGY GROUP

The Genealogy Group in the Methodist Chapel at 1pm every Thursday. If you are interested in finding out what secrets your family tree may contain please come along – there is no charge and help is on hand as well as internet access.



APPLETON WISKE NEWS

APPLETON WISKE PRE-SCHOOL

Bingo Lotto

Well done to Elaine Matthews who won an amazing £1000!! Our new game started on Sat 26th March.

A huge thank you to parents, grandparents and the wonderful community of Appleton Wiske for your support in playing our Bingo Lotto. Once again we will be playing for a £1000. You have to be in it to win it!

Preschool have funded and non funded places from September

Please contact preschool for more information contact Liz Huckle, Preschool Manager
07483 875119

APPLETON WISKE COMMUNITY PRIMARY SCHOOL

May Fayre with Cream Teas

Friday 29th April 2:30pm

Visitors are welcome! Each class will be dancing around the May Pole and we may even attempt the Year 5/6 ribbon dance!

The Friends of the School

Thursday 7th April 6pm

Please join us in the Lord Nelson for our next Friends meeting – it would be great to see some new faces! Everyone is welcome.



APPLETON WISKE COMMUNITY PRIMARY SCHOOL



I hope this finds everybody in our school community healthy and well. We are enjoying a busy and productive year with lots to celebrate. Our pupils are an absolute joy and display such fantastic attitudes; they are a real credit to their families and can be proud of their achievements in and out of school. This year certainly feels more 'normal' and we have been able to provide our pupils with a wide range of enriching activities and opportunities.

It seems a while ago now but our build up to Christmas was great fun and included Christmas lunch, Christmas carols, a fabulous Class 1 Nativity, class parties and a visit from Father Christmas! We have participated in sporting events such as Skip 2B Fit, young leader training, judo, cross country, sports hall athletics, netball and hockey. We have also taken part in national events such as Remembrance, Anti-Bullying Week and World Book Day, and we have supported charities like Children in Need, Defenders of Health and Red Nose Day.

Recently, our Class 3 pupils have been on a village walk and delivered positive messages to some lucky residents, and they have enjoyed a virtual visit from children's author, Sophie Kirtley. Our Class 2 pupils have started a project called 'Music For Life' and loved their first session with a professional musician. Pupils in Class 1 have been visiting a local woodland for Forest School sessions which enhance their physical and emotional development. On top of this, our pupils are working incredibly hard in the classroom and making tremendous progress. Please visit our website to see photographs of school events – www.appletonwiske.n-yorks.sch.uk/gallery – and you can also find us on Facebook.

Thank you for your continued support.

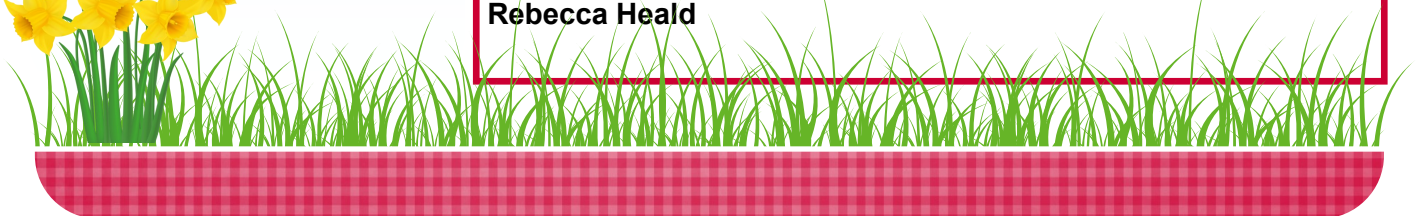
Neil Clark Head Teacher

APPLETON WISKE PARENT AND CARER TODDLER PLAYGROUP

Fridays 10am to 12pm (term-time only)

A friendly and welcoming parent and toddler group, giving carers, babies and toddlers the chance to socialise in a relaxed, small group. We offer a range of activities, children can play with lots of toys; sit & ride-on, slides, rockers, jigsaws, books, soft toys, role play, dressing up, baby toys, story time, singing, bubbles and much more. Tea, coffee, juice and biscuits or fruit is available and included in the cost of £2 per family per session.

Please just come along on the day! **Contact: Helen Smith or Rebecca Heald**



APPLETON WISKE NEWS

Kid's Corner



SPRING



Word Search

| | | | | | | | |
|---|---|---|---|---|---|---|---|
| P | A | E | T | S | U | N | L |
| H | N | G | F | R | O | G | R |
| W | E | G | B | Z | J | B | A |
| O | S | L | E | A | F | O | I |
| R | T | C | E | S | Y | O | N |
| M | U | B | I | R | D | T | F |



BEE



BIRD



BOOT



EGG



FROG



LEAF



NEST



RAIN



SUN



WORM

Appleton Recreation Association (ARA)

Do you enjoy using the playing field or the children's recreation area, mugga, skate park or even the tennis courts? It is the ARA who are responsible for all these areas including the upkeep, grass cutting etc. We pay for all of these areas through the **200 club**, each of the numbers cost just £20 for the year and we do 4 draws per year. As we now have 20 spare numbers we are looking for some new members who would like the opportunity to win **£250** four times a year and at the Xmas draw the 1st prize is **£500**. Please come and speak with Jackie in the village shop to choose your number. Without the support of the whole village we could lose all these fantastic facilities.

Ukrainian Appeal

Many thanks to everyone in the Parish, of Appleton Wiske and Great Smeaton who responded at short notice to the appeal at the beginning of March.

The photograph is the view from St Eloy's church showing about half the donations! They were sent via St Hilda's church in Darlington.



TIME TO GET WALKING AGAIN!

Walking in Yorkshire <https://www.walkinginengland.co.uk/yorkshire> has hundreds of walks to download and print, free, it also has books of walks, details of all the walking groups in the county and much more all in one place.!



APPLETON WISKE HISTORY

Domestic Ephemera

by Derek Partington

You may have been watching the “Digging for Britain” programmes on TV. They have shown that there is a lot to be learnt about where and how people lived in by looking at household objects, or domestic ephemera. The field to the west of St Mary’s churchyard has thrown up some examples of these objects which were a part of everyday life for the inhabitants of Appleton Wiske. Some are shown in the photos below.

| | | |
|---|--|---|
|  |  |  |
| A medieval ring | Two spinning whorls and a piece for smoothing cloth | Handmade button |
|  |  |  |
| Four musket balls | Used artillery shot | Six shoe buckles |
|  |  |  |
| Candle snuffer | Two thimbles | Thirty buttons |

The ring is thought to be medieval as are the spinning whorls which are made of lead. The thread was fed through the hole in the middle and then the lead was spun round to create the twist. The cloth smoother is also made of lead and from the same period. The handmade button has not been dated as yet but is known to be very old. Although not “domestic” the musket balls and the artillery shot, which weighs over 350g and has been fired, may date back to the 15th century. The shoe buckles show a variety of design and are thought to date from the 16th/17th century. The age of the candle snuffer is unknown but the two thimbles are more recent as they are machine made – the smaller one is for a child. The buttons are mass produced, probably in the 19th century and show many different designs.

So the field was in domestic use for hundreds of years. Pottery, glass, fragments of clay pipes and animal remains, possible from pie making, have been found in the village.

What might your garden be hiding?

